

ECHOES

THROUGH TIME

TAROT BY
LYN THURMAN

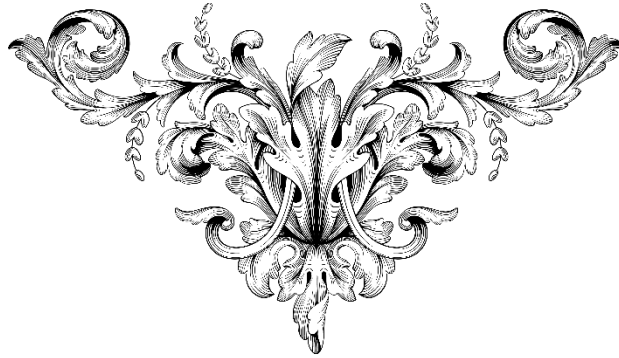
GUIDE BY
PAUL THURMAN

CONTENTS

Echoes Through Time	5
The Fool.....	11
Magician	12
The High Priestess	13
The Empress.....	14
The Emperor	15
The Hierophant	16
The Lovers	17
The Chariot	18
Strength.....	19
The Hermit.....	20
The Wheel of Fortune	21
Justice.....	22
The Hanged Man.....	23
Death.....	24
Temperance	25
The Devil	26
The Tower	27
The Star.....	28
The Moon.....	29
The Sun.....	30
Judgment.....	31
The World	32
Ace of Cups.....	33
Two of Cups.....	34
Three of Cups.....	35
Four of Cups	36

Five of Cups.....	37
Six of Cups.....	38
Seven of Cups	39
Eight of Cups	40
Nine of Cups	41
Ten of Cups	42
Page of Cups	43
Knight of Cups.....	44
Queen of Cups.....	45
King of Cups.....	46
Ace of Pentacles.....	47
Two of Pentacles	48
Three of Pentacles.....	49
Four of Pentacles.....	50
Five of Pentacles	51
Six of Pentacles.....	52
Seven of Pentacles	53
Eight of Pentacles.....	54
Nine of Pentacles	55
Ten of Pentacles	56
Page of Pentacles	57
Knight of Pentacles	58
Queen of Pentacles.....	59
King of Pentacles	60
Ace of Swords.....	61
Two of Swords	62
Three of Swords.....	63
Four of Swords.....	64
Five of Swords	65
Six of Swords.....	66
Seven of Swords	67

Eight of Swords.....	68
Nine of Swords	69
Ten of Swords	70
Page of Swords	71
Knight of Swords`	72
Queen of Swords.....	73
King of Swords	74
Ace of Wands	75
Two of Wands	76
Three of Wands	77
Four of Wands.....	78
Five of Wands	79
Six of Wands	80
Seven of Wands.....	81
Eight of Wands.....	82
Nine of Wands.....	83
Ten of Wands.....	84
Page of Wands.....	85
Knight of Wands	86
Queen of Wands.....	87
King of Wands.....	88



ECHOES THROUGH TIME

The *Echoes Through Time* Tarot is the culmination of an idea that first emerged while I was working on my previous deck, *Wisdom of the Depths*. In that project, I explored the depths of intuition and emotion, but as I delved further into the world of tarot, I found myself drawn to something even more profound—the voices of the past.

I was captivated by the idea that old artwork, long forgotten and left in the public domain, could still speak to us today. These characters, from another time, have lived full lives, filled with wisdom, experience, and stories. Though they are long gone, their insights remain as valid and relevant as ever, resonating with the complexities of modern life. This sparked the concept for *Echoes Through Time*—a deck where the long-dead return, not as mere memories, but as guides with valuable lessons to share.

Each card in this deck brings classical artwork into a modern setting, as if the spirits of the past are reaching out through the cards, offering their guidance to those willing to listen. The wisdom they carry is timeless, providing insights that transcend the ages, helping us navigate the challenges of the present and uncover the mysteries of the future.

As you work with the *Echoes Through Time* Tarot, you'll not only connect with the symbolism of the traditional Rider-Waite-Smith system, but also tap into the rich, layered histories of the figures depicted. Allow their voices to speak through the cards, and in doing so, discover how the wisdom of the past can illuminate your path forward.

READING THE CARDS

Tarot readings offer insight into the energy and potential surrounding situations, relationships, or events in your life. By revealing these patterns, opportunities, or possible challenges, a reading can guide you towards making more informed and empowered decisions. Often, a tarot reading serves as a validation of what you already sense intuitively, offering reassurance and clarity when you need it most. Whether you're seeking answers or simply trying to understand the flow of energy in your life, the cards can provide a meaningful reflection of your inner knowing.

When it comes to reading the cards, you can interpret them in either upright or reversed (upside down) positions. The choice is entirely yours—there's no definitive right or wrong way to approach tarot. If you'd like to incorporate reversals into your practice, one simple method is to view the reversed card as indicating a blockage or delay in the energy it represents. However, this guide includes keywords for both upright and reversed, designed to serve as starting points for your interpretation. These keywords can spark your intuition and inspire deeper meanings, allowing you to connect with the cards in a way that feels personal and resonant.

SUGGESTED TAROT SPREADS

THE THREAD OF TIME SPREAD

This spread traces the thread of time between past, present, and future, helping you see how they are interconnected. It offers a quick way to explore the flow of time and the continuous influence of the past on your unfolding journey.



Card 1



Card 2



Card 3

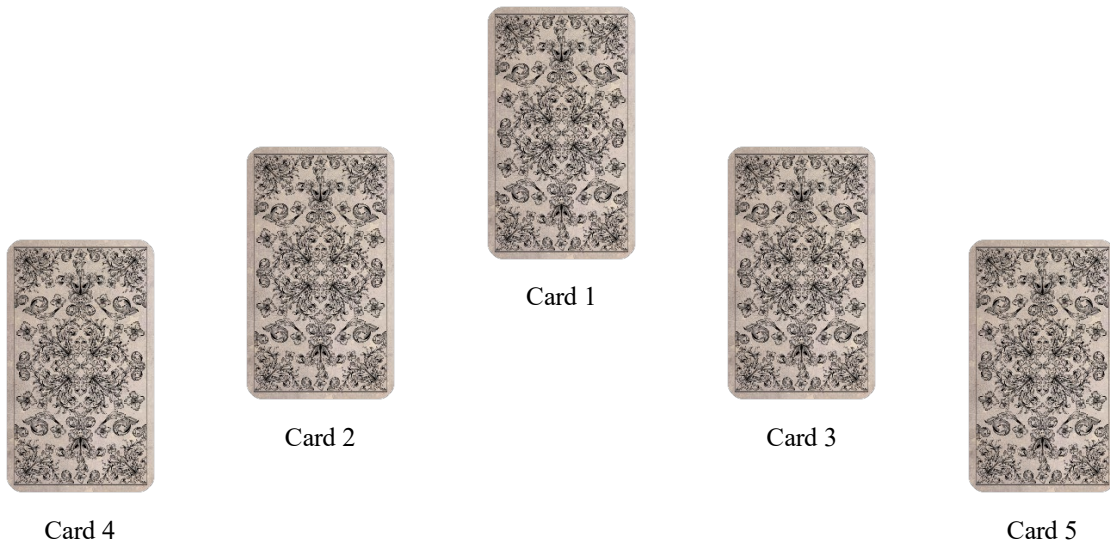
Card 1: What the Past Taught You – What key lesson or experience from the past is influencing you?

Card 2: What the Present Demands – What is the current situation calling for, based on that lesson?

Card 3: What the Future Holds – What potential outcome or opportunity is waiting for you as a result of this connection?

THE SPIRIT COUNCIL SPREAD

This spread calls upon the guidance of multiple "voices" from different times, as if you're sitting with a council of ancestors or wise spirits. It's perfect for when you need a well-rounded perspective on a situation.



Card 1: The Elder's Wisdom – What ancient knowledge or experience from the past is most relevant to your situation?

Card 2: The Warrior's Strength – What action or inner strength do you need to embody to move forward?

Card 3: The Healer's Advice – What emotional or spiritual healing is needed to resolve the issue?

Card 4: The Poet's Insight – What creative or intuitive approach can help you see things differently?

Card 5: The Spirit's Message – What overarching message is your council of spirits giving you as guidance?

THE MIRROR OF TIME SPREAD

This spread focuses on the interplay between your past and present, revealing how past actions or choices are affecting your current reality and how you can break or honour these cycles.



Card 1



Card 2



Card 3



Card 4



Card 5

Card 1: The Reflection of the Past – What past event, choice, or relationship is still influencing your present?

Card 2: The Present Response – How are you currently reacting to or engaging with this influence?

Card 3: The Pattern Repeating – What cycle from the past is repeating, for better or worse?

Card 4: The Lesson Unlearned – What lesson have you not yet fully embraced or understood?

Card 5: The Breakthrough – What action or awareness will help you break free of unhealthy patterns or honour the wisdom gained?

THE VOICES OF THE FORGOTTEN SPREAD

Inspired by the idea that history holds untold stories, this spread is about connecting with wisdom that may have been overlooked, hidden, or forgotten but is now ready to be reclaimed.



Card 1



Card 2



Card 3



Card 4



Card 5

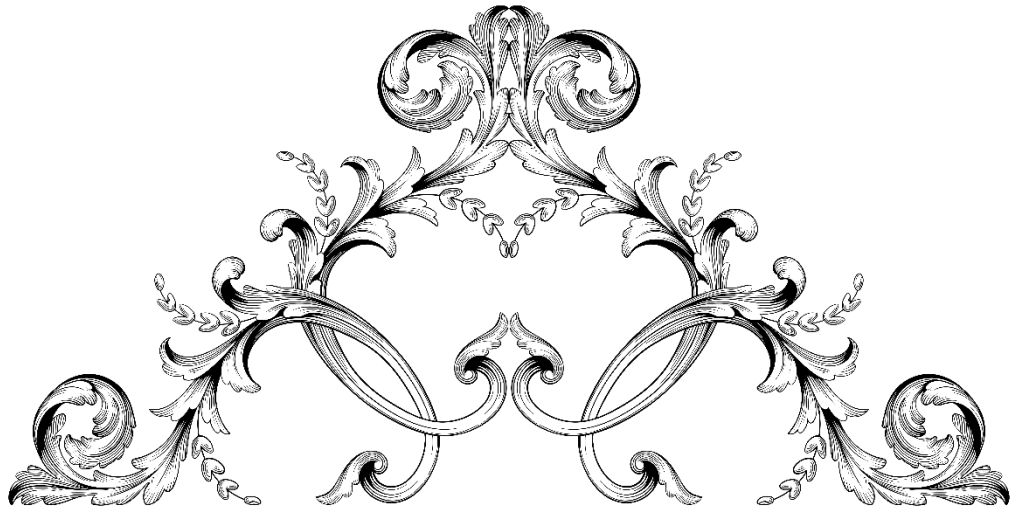
Card 1: The Forgotten Voice – What wisdom or guidance from the past has been overlooked or ignored?

Card 2: The Buried Truth – What truth or knowledge is ready to be uncovered in your current life?

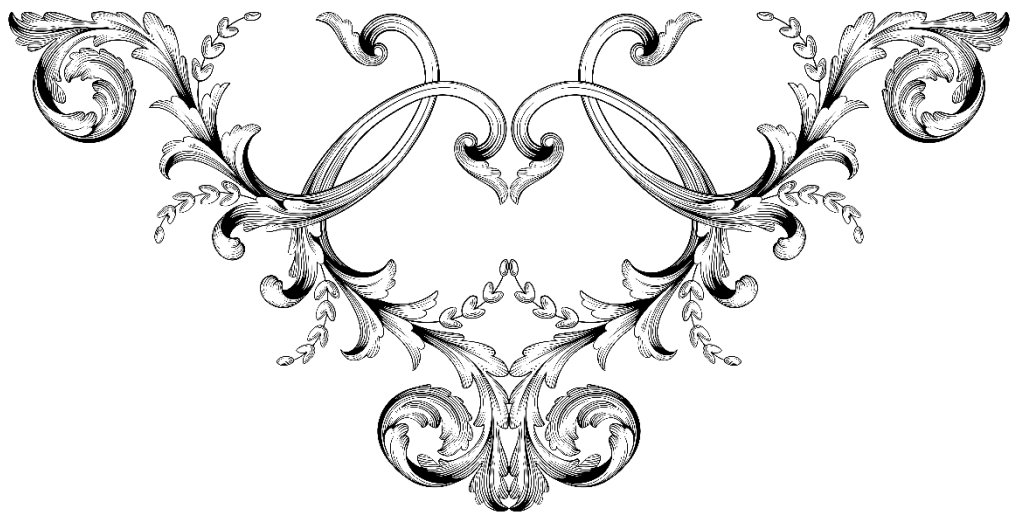
Card 3: The Lost Opportunity – What opportunity from the past was missed, and how can it be reclaimed or reframed now?

Card 4: The Rediscovered Strength – What strength or resource from the past is resurfacing to help you in the present?

Card 5: The Legacy Left Behind – What long-term impact or legacy is this forgotten wisdom ready to create for your future?



The Cards





THE FOOL

UPRIGHT KEYWORDS:

Freedom - The flamboyant red dress and carefree dance posture suggest a sense of liberation and freedom.

Adventure - The travel bag indicates readiness for new experiences or journeys.

Spontaneity - The playful interaction with the dog and the dynamic dance moves conveys a spontaneous and spirited attitude.

REVERSED KEYWORDS:

Recklessness - The precarious dance moves might imply a lack of caution or recklessness.

Negligence - The distraction from the dance might suggest negligence or unawareness of surroundings.

Misdirection - The way the figure is facing away from the travel bag could symbolise a lack of direction or misguided steps.



About the card

This was the first card I created for the deck. I found this dancer and knew she had the attitude of The Fool. It really was the card of beginnings! I put her in a disco with her handbag and white dog following her lead – she doesn't have a care in the world about looking out of place as she's too busy focusing on dancing to her own tune.



MAGICIAN

UPRIGHT KEYWORDS:

Skill - The magician's adept handling of the snake and his array of tools symbolise mastery and proficiency in manipulating circumstances.

Resourcefulness - The assortment of magical items and the "Miracle Elixir" highlight the magician's ability to use available resources effectively.

Manifestation - His performance represents the power to bring ideas into reality, showcasing the ability to manifest desires through focused intention and action.

REVERSED KEYWORDS:

Deception - The presence of the "Miracle Elixir" wagon and the snake may indicate trickery or deceit, raising questions about his intentions.

Manipulation - A warning against using skills and resources unethically to manipulate others for personal gain.

Illusion - The potential for illusions or false promises, suggesting a need to discern reality from appearances and avoid being misled.

About the card

My aim with this card is to make the reader wonder if The Magician is a genuine conduit for directing the universal energies or perhaps a clever illusionist. He looks the part but is he really?





THE HIGH PRIESTESS

UPRIGHT KEYWORDS

Intuition - The veiled woman symbolises deep inner knowing and the power of intuition.

Mystery - The apothecary, with its array of mysterious potions and remedies, represents the unknown and the hidden aspects of life, inviting exploration and understanding of deeper truths.

Wisdom - The High Priestess's concealed face emphasizes the depth of her wisdom and the esoteric knowledge she possesses, suggesting the importance of seeking hidden truths.

REVERSED KEYWORDS

Confusion - A disconnect from one's intuition, leading to confusion and a lack of clarity.

Secrets - Hidden truths or withheld information may cause misunderstandings or distrust, suggesting the need for openness and honesty.

Disconnection - A potential disconnection from one's inner self or spiritual path, highlighting the importance of reconnecting with one's deeper truths.

About the card

I made the High Priestess wear the mysteries rather than just guard them. If she were to beckon you into her apothecary, you would know you were in safe hands and if you trust her, you could be guided to find your own inner wisdom.





THE EMPRESS

UPRIGHT KEYWORDS:

Fertility - The lush, abundant greenery and flowers symbolise growth and fertility.

Nurturing - Her gentle demeanour and the act of holding a flower delicately suggest a nurturing and caring nature.

Beauty - The serene and beautiful setting, along with her graceful appearance, underscore themes of beauty and harmony.

REVERSED KEYWORDS:

Neglect - In reverse, the nurturing elements might point to neglect or a lack of care.

Dependency - The tranquil environment could suggest over-reliance on comfort and the external, leading to dependency.

Stagnation - Despite the lush surroundings, the card in reverse might indicate a lack of progress or personal growth.



About the card

I wondered if I were to meet The Empress in real life, where would she be? A flower shop, full of the abundance and beauty of nature, seemed to be the perfect setting. Even though the Empress might be indoors, bees, so necessary for the continuation of new flowers and crops, are her companions (or perhaps co-workers) in the shop.



THE EMPEROR

UPRIGHT KEYWORDS:

Authority - The figure's confident seating on a throne with a crown suggests strong authority and leadership.

Control – Holding a game controller in one hand and a remote control in the other might symbolise control or mastery over one's environment or situation.

Structure - The formal attire and organized setting underscore a sense of structure and order.

REVERSED KEYWORDS:

Tyranny - The authoritative pose could imply dominance to the point of tyranny or excessive control when reversed.

Rigidity - The strict, formal nature of his environment and attire might suggest inflexibility or a lack of adaptability.

Loss of Control - Despite the appearance of control, the reversed aspect could indicate a loss of control or ineffectiveness in leadership.



About the card

I had so much fun with this card! The Emperor sits high above a city in his penthouse holding onto tools of control that we see in our everyday lives – a game controller and the TV remote (I wouldn't be surprised to learn that wars have been started over who controls the TV remote!).



THE HIEROPHANT

UPRIGHT KEYWORDS:

Guidance - The Hierophant's authoritative and wise demeanour in a religious or traditional setting suggests he is a guide for moral or spiritual matters.

Community - The empty chairs imply a space for followers or students, showing community involvement and learning.

Tradition - His attire and the cathedral-like background emphasize adherence to established cultural or spiritual traditions.

REVERSED KEYWORDS:

Dogmatism - An overly rigid adherence to traditional values or doctrines, reflected in his stern demeanour and formal setting.

Rejection of Conventional Wisdom - The empty chairs could show a growing dissent or rejection of the established norms and teachings he represents.

Spiritual Misalignment - The overall sombre tone and decayed surroundings might imply a disconnection or misalignment between his spiritual leadership and the needs or values of his potential followers.



About the card

I wanted to give the impression that the Hierophant is available but perhaps the setting with its crumbling walls and empty chairs speaks of traditions breaking down and no longer being maintained in ways in which they once were.



THE LOVERS

UPRIGHT KEYWORDS

Union - The couple's close stance symbolises a strong and harmonious union, emphasising partnership and mutual support.

Love - The presence of blooming flowers and the radiant sun above reflect deep love, connection, and the beauty of a shared bond.

Choice - The archway signifies a significant decision or choice, highlighting the importance of choosing with the heart and aligning with one's values.

REVERSED KEYWORDS

Disconnection - A lack of harmony or a disconnection in a relationship, suggesting the need to address underlying issues.

Indecision - Difficulty in making a crucial choice or feeling uncertain about the direction of a relationship, leading to potential conflicts.

Imbalance - An imbalance in the partnership, where one person may be giving more than the other, highlighting the need for mutual effort and understanding.

About the card

As soon as I found the image of this couple, I wanted them to be The Lovers. I like the idea that deep connections, unions or choices happen at any time in life – not just in the flush of youth. I like stability that can come from 'old lovers'.





THE CHARIOT

UPRIGHT KEYWORDS:

Determination - The figure's direct gaze and centered positioning in a wheelchair suggest a keen sense of determination and drive.

Control - The presence of the wheelchair as a vehicle shows themes of control and mastery over one's own path.

Forward Movement - The street setting, leading into the distance, emphasizes progress and moving forward, despite challenges.

REVERSED KEYWORDS:

Stagnation - Obstacles or delays in progress, represented by the stationary aspect of the wheelchair.

Loss of Control - In a reversed state, this card may suggest difficulties in maintaining direction or control over one's circumstances.

Resistance - The figure's poised but static posture could also indicate internal or external resistance to the necessary journey or changes ahead.

About the card

It took me a long time to find the perfect Chariot. I found this seated man and knew he would make a great charioteer. The wheelchair represents forward movement even when circumstances seem too big to overcome.





STRENGTH

UPRIGHT KEYWORDS

Courage - The calm demeanour of the nude woman beside the lion symbolises bravery and inner strength, highlighting the power of facing challenges with confidence.

Compassion - The gentle interaction between woman and lion reflects the importance of compassion and kindness in exercising strength and control.

Freedom - The hole in the chain-link fence indicates that the woman and the lion have escaped the zoo enclosure, symbolising the pursuit of freedom and the ability to break free from constraints.

REVERSED KEYWORDS

Self-Doubt - A lack of confidence or inner strength, leading to hesitation and uncertainty in facing challenges.

Aggression - A warning against using brute force or aggression instead of compassion and understanding.

Vulnerability - The woman's nudity and the compromised enclosure suggest feeling exposed or vulnerable, highlighting the need to reconnect with one's inner strength and courage to overcome obstacles.

About the card

I wanted to put the woman and lioness outside of a zoo enclosure – having the strength to escape one's bounds and seek out greener pastures.





THE HERMIT

UPRIGHT KEYWORDS:

Reflection - The Hermit stands alone in a bustling cityscape, symbolising a journey of self-discovery amidst external chaos.

Wisdom - Clad in a robe that suggests traditional wisdom, The Hermit's presence in a modern environment shows the blending of ancient knowledge with contemporary life.

Solitude - Despite being in a crowded area, The Hermit's emphasises the importance of solitude in finding one's inner light or truth.

REVERSED KEYWORDS:

Isolation - The setting in a busy street while being clearly apart from others might indicate feelings of isolation or disconnection from society.

Lost - The contrast between the traditional robe and the modern surroundings could suggest a loss of direction or purpose, feeling out of place in one's environment.

Resistance to Advice – This card may also reflect a reluctance to heed the inner wisdom or guidance offered by life's experiences, opting instead to remain inwardly closed off.

About the card

Rather than have The Hermit carry a light, I wanted him to be in the light in the darkness of a bustling city street. He is the light and all that it entails.





THE WHEEL OF FORTUNE

UPRIGHT KEYWORDS:

Destiny - The Wheel of Fortune itself symbolises cycles of change, fate, and destiny controlling the course of events.

Opportunity - The figure turning the wheel suggests the moment of seizing opportunities as they arise, representing the potential for positive change.

Cycles - The colourful wheel highlights the cyclical nature of life, emphasising the continuous flow of ups and downs.

REVERSED KEYWORDS:

Instability - Unexpected changes that cause instability or chaos in one's life.

Resistance to Change - The resistance to the natural cycle of life and fortune, suggesting difficulty in adapting to new circumstances.

Misfortune - The reversed position could also indicate a period of bad luck or negative outcomes, emphasising the less favourable aspect of fate.



About the card

I loved the idea of having a 'spin the wheel' game on the Wheel of Fortune. I think most of us can relate to the seemingly random stopping of the Wheel and how game show contestants' fortune can be made or broken by a single spin. [00]



JUSTICE

UPRIGHT KEYWORDS:

Fairness - The presence of the scales symbolises balance and fairness, emphasising the importance of equity in decision-making.

Truth - The sword held aloft signifies truth, clarity, and the cutting away of falsehood to uphold justice.

Accountability - Positioned between classical columns that suggest a courthouse or temple of law, the figure represents accountability and the rule of law.

REVERSED KEYWORDS:

Injustice - Unfairness, bias, or a miscarriage of justice, where decisions are not balanced or impartial.

Dishonesty - The card symbolises dishonesty or a lack of clarity in legal or personal matters.

Avoidance of Accountability - The reversed aspect may also suggest evasion of responsibility or refusal to face the consequences of one's actions.

About the card

For this card, I wanted to portray the idea that Justice is dispensed outside of a courtroom as well as inside. Finding a balance between what's right and wrong is a daily occurrence and not something that happens when we are called into a legal system.





THE HANGED MAN

UPRIGHT KEYWORDS:

Reflection - Highlights introspection and gaining insight from unique or challenging positions, illustrated subtly by the figure's inverted stance.

Sacrifice - Reflects the sacrifices made for deeper understanding, where physical discomfort becomes secondary to spiritual or emotional gains.

Patience - Emphasizes the virtue of patience, necessary to master both physical and mental challenges.

REVERSED KEYWORDS:

Stagnation - Points to a period of feeling stuck or unable to progress, subtly noted by the struggle to find comfort or effectiveness in the current approach.

Resistance to Change - Suggests a reluctance to fully embrace new perspectives or methodologies, even when they might offer valuable lessons.

Misdirected Efforts - Indicates that efforts may be energetic but poorly targeted, leading to frustration and lack of substantial results.

About the card

As we don't see too many people hanging upside down these days, I pondered on where a Hanged Man might be found. I really enjoyed putting this character on a pole, where the sacrifice he's made for his art has paid off.





DEATH

UPRIGHT KEYWORDS:

Transition - The mummified woman amidst vibrant, lush foliage suggests a profound transformation, where endings lead to new beginnings.

Renewal - The thriving natural environment around the woman of death emphasizes the theme of life renewing itself, even though decay.

Release - The posture of the woman, covering her face, symbolises acceptance and the emotional process of letting go of the old to make way for the new.

REVERSED KEYWORDS:

Resistance to Change - Indicates a struggle against the inevitable changes or transitions, refusing to let go of the past.

Stagnation - Reflects a period of being stuck due to an inability to move forward from old patterns or situations.

Fear of Loss - Highlights an overwhelming fear of loss or the unknown, which prevents necessary evolution and growth.

About the card

This was one of the first images that I found for the deck. It's a painting of a South American mummy. I wanted to put her somewhere lush and green where life was evident. The idea behind this card is that we have to face death in order to transition to something different or better (or both!).





TEMPERANCE

UPRIGHT KEYWORDS:

Balance - The figure holding a large jug on her head, balancing it, symbolises equilibrium and moderation.

Harmony - The wings, colourful and wide, suggest a harmonious blending of diverse elements, embodying the spirit of cooperation and peace.

Healing - The serene expression and gentle posture of the figure, combined with the nurturing presence of flowers, represent healing and restoration.

REVERSED KEYWORDS:

Imbalance - The precarious position of the jug might indicate difficulties in maintaining balance, leading to disorder or excess.

Conflict - The juxtaposition of the grounded figure against the expansive wings could suggest internal or external conflicts between desires and reality.

Excess - A lack of moderation or overindulgence, where too much of one element disrupts overall harmony.

About the card

The water bearer on this card isn't in your usual setting and she's carrying the water rather than pouring it. However, it takes great skill to balance the water like that. Is she bringing healing and harmony to the urban setting?





THE DEVIL

UPRIGHT KEYWORDS:

Bondage - The chains held by the devil symbolise being trapped or restricted by materialistic or earthly ties.

Temptation - The neon sign "Join Vices" suggests the allure of immediate gratification or indulgence, emphasising the theme of temptation.

Materialism - The phrase "buy now, pay later" alongside "one soul payment" highlights the dangers of excessive materialism, and the spiritual cost associated with it.

REVERSED KEYWORDS:

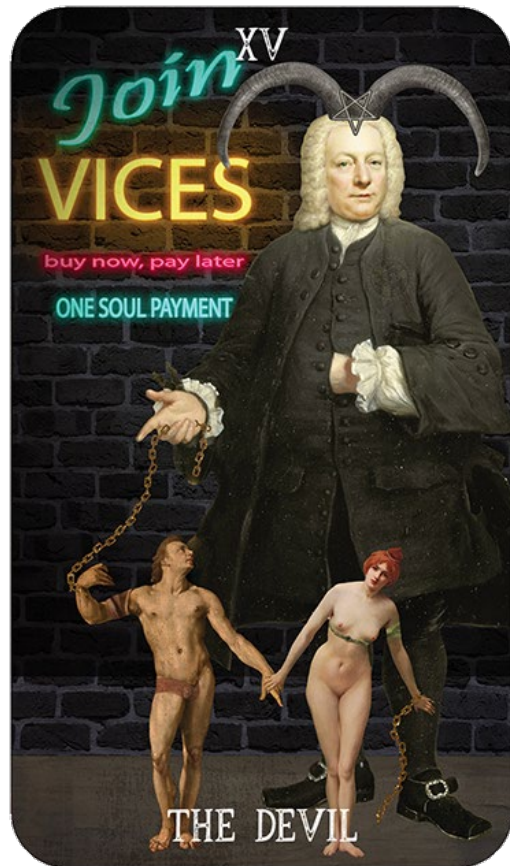
Breaking Free - The imagery of chains indicates the potential to break free from restrictions or overcoming dependencies.

Rejection of Materialism - A conscious rejection of materialistic values or the superficial aspects of life.

Awareness of Manipulation - Reflects a growing awareness of how one has been manipulated by desires or external forces, leading to a reassessment of priorities and values.

About the card

I had fun with The Devil. History shows us that most 'devils' were old, white men with posh accents rather than the stereotypical Christianised devil and I wanted to reflect that in the card.





THE TOWER

UPRIGHT KEYWORDS

Upheaval - The collapsing building and falling figures show sudden upheaval and dramatic changes, often unexpected.

Revelation - The lightning strike represents a moment of revelation or truth, breaking down old structures and illusions to reveal a new reality.

Transformation - The destruction caused by the wrecking ball signifies a necessary transformation, clearing away the old to make way for new opportunities.

REVERSED KEYWORDS

Avoidance - An attempt to avoid or resist necessary changes, leading to prolonged instability or stagnation.

Fear of Change - A reluctance to embrace transformation due to fear of the unknown, which can result in missed opportunities for growth.

Denial - The men playing instruments as they fall show denial or distraction from the severity of the situation, indicating the need to face reality and change.

About the card

The musicians were just hanging out, doing their own thing, when a wrecking ball began to demolish their apartment building. I wanted to get the idea of complete surprise at what was happening. There may have been a warning notice, but these guys were too wrapped up in themselves to notice.





THE STAR

UPRIGHT KEYWORDS

Hope - The woman's gaze towards the sky and the iconic Hollywood sign show hope and the pursuit of dreams, inspiring faith in the future.

Aspiration - The Hollywood Walk of Fame star represents the aspiration for recognition and success, highlighting the drive to achieve one's goals.

Guidance - The serene setting in the Hollywood Hills suggests a moment of reflection and the importance of following one's guiding star to navigate through life's challenges.

REVERSED KEYWORDS

Despair – A loss of hope or feeling disillusioned with one's dreams and aspirations.

Unfulfilled Dreams - Struggling with feelings of inadequacy or not being acknowledged for one's efforts, leading to self-doubt.

Isolation - The solitary setting in the Hollywood Hills may suggest feelings of isolation or being disconnected from one's path, emphasising the need to reconnect with one's inner guidance and aspirations.

About the card

The woman in this card is already holding her star – she just needs to pursue her path a little longer to realise her dream. I wanted to portray faith in the future.





THE MOON

UPRIGHT KEYWORDS:

Mystery - The enigmatic scene under the full moon, with a figure dancing while wolves howl, encapsulates the mysterious and elusive nature of the subconscious.

Intuition - The moonlight bathing the scene emphasizes intuition and the exploration of deeper, hidden aspects of the psyche.

Illusion - The surreal atmosphere and the presence of wolves, often symbols of untamed nature, hint at deception or confusion that can cloud judgment.

REVERSED KEYWORDS:

Misunderstanding - Indicates misunderstandings arising from obscured truths and the inability to see things clearly.

Fear - The haunting image of wolves howling at the moon may represent unresolved fears or anxieties that distort perception.

Revealed Secrets - As secrets or previously obscured aspects become known, the card may signify a revelation that dispels illusions, urging a return to reality.



About the card

I'm never quite sure whether the woman is entranced by dance or has succumbed to the madness of The Moon. I think it captures the illusive and mysterious nature of the card perfectly.



THE SUN

UPRIGHT KEYWORDS

Joy - The smiling child and vibrant sunflower field symbolise pure happiness and the joy that comes from a positive outlook on life.

Vitality - The bright sun shining above represents vitality, energy, and the life-giving force that promotes growth and well-being.

Innocence - The butterflies in the child's hand highlight themes of innocence, freedom, and the beauty of transformation and growth.

REVERSED KEYWORDS

Sadness - A lack of joy or feelings of sadness, suggesting the need to find happiness within.

Fatigue - Experiencing low energy or vitality, indicating a time to rest and rejuvenate to regain strength.

Confusion - A lack of clarity or feeling clouded in judgment, suggesting the need to seek out the truth and clear away misunderstandings.

About the card

This is one of my favourite cards. The background is from a photo I took at a pick-your-own sunflower farm in southern England, and it was one of the most joyous afternoons I've ever spent! I wanted that happiness to filter into The Sun.





JUDGMENT

UPRIGHT KEYWORDS:

Reckoning - The figure with arms raised, along with the theme of a TV show, symbolises a moment of reckoning or final evaluation, where actions are assessed, and consequences follow.

Awakening - The celestial backdrop and the figure's posture suggest a spiritual or existential awakening, a call to a higher purpose or realisation.

Transformation - The setting implies a stage for dramatic change, indicating life-altering decisions influenced by new insights or external judgments.

REVERSED KEYWORDS:

Doubt - Self-doubt or questioning past decisions, leading to regret or a feeling of being judged unfairly.

Delay in Resolution - The card signifies delays in achieving closure or clarity, with decisions or verdicts postponed.

Fear of Judgment - Reflects an avoidance of confronting necessary truths, due to fear of facing one's own actions or the judgment of others.

About the card

Inspired by TV talent shows, I wanted to put Judgement in this setting. The character has given her best performance so regardless of any external judgement, she must be good with the outcome, knowing she's done all she can.





THE WORLD

UPRIGHT KEYWORDS:

Completion - The woman gazing at a globe signifies the culmination of a journey or cycle, symbolising achievement and the fulfilment of objectives.

Unity - The presence of diverse plants and the small dog looking up at the globe represent harmony and connection across various aspects of life.

New Beginnings - The window's light and the serene setting suggest readiness for new phases, viewing the world with fresh perspectives and opportunities.

REVERSED KEYWORDS:

Unfinished Business - Tasks or goals that remain incomplete, due to lack of closure or unresolved issues.

Disconnection - Feelings of isolation or disconnection from global or communal ties, despite the opportunities for engagement.

Delays - Implies delays in achieving set goals or a pause before the start of a new cycle, leading to potential frustration or impatience.

About the card

This was the final card I created. I wanted to bring in elements of The Fool (the handbag and the dog) into The World to show a completion of a cycle. Now the more experienced Fool is onto her next big adventure or journey.





ACE OF CUPS

UPRIGHT KEYWORDS

New Beginnings - The golden cup, prominently displayed, symbolises the birth of new emotions or relationships, filled with potential and purity.

Emotional Opportunities - The cup's openness to the skies suggests a receptiveness to emotional experiences and the readiness to embrace whatever feelings may come.

Spiritual Abundance - The flowers and greenery, representing growth and flourishing, indicate an overflowing of spiritual or emotional wealth.

REVERSED KEYWORDS

Emotional Loss – Emotions being poured out or lost, indicating a time of emotional upheaval or release.

Blocked Creativity - A difficulty in accessing one's inner thoughts or creative impulses.

Missed Connections - A time of introspection or missed opportunities for emotional connection.

About the card

All aces in this deck feature doors as gateways to new opportunities and possibilities. I wanted to be curious as to what lies behind the door. This ace features a fish door knocker and a blue door to align with the water element.





TWO OF CUPS

UPRIGHT KEYWORDS

Unity - The man and woman standing side by side, each holding a cup, symbolise a harmonious alignment of souls.

Partnership - The cup that each person holds is indicative of an offer or exchange. This suggests a mutual giving and receiving, a core aspect of any collaborative relationship.

Connection - The Eiffel Tower in the background is an iconic symbol of love and romance, reinforcing the idea of a deep and meaningful connection.

REVERSED KEYWORDS

Disunion – A lack of transparency or understanding, leading to a sense of disunion or separation.

Miscommunication – A clash of values or perspectives, often leading to miscommunication.

Imbalance - One party is more invested than the other, resulting in an imbalance in the relationship.

About the card

What could be more romantic than a flower seller in Paris! The characters on this card spoke to me of early romance and flirtation, when the possibility of a relationship is on the cards.





THREE OF CUPS

UPRIGHT KEYWORDS

Celebration - The women are depicted with arms around each other and cups raised, symbolising a time of celebration and joy.

Friendship - Their close stance and supportive gestures highlight strong bonds of friendship and mutual support.

Artistic Expression - The vibrant body paint on the women signifies creative self-expression and the celebratory spirit of the occasion.

REVERSED KEYWORDS

Overindulgence - An excess of celebration leading to overindulgence.

Fractured Relationships –Conflicts or a breakdown in camaraderie or friendships.

Misaligned Goals - A lack of shared vision or unity among friends.

About the card

I enjoyed creating this card so much. I took the three women out of their classical painting and into a street festival, gave them sunglasses, sprayed them in paint and gave them chalices to raise in toast.





FOUR OF CUPS

UPRIGHT KEYWORDS

Contemplation - The woman's seated position and the focus on the three cups on the ground suggest a period of deep reflection or contemplation.

Apathy - The fourth cup, placed on a table to the side and unnoticed by the woman, symbolises an opportunity or emotional offering that is being overlooked.

Discontent - The figure's body language, indicates a closed-off attitude and a sense of dissatisfaction with the situation.

REVERSED KEYWORDS

Inward Focus - A deeper introspection, potentially leading to emotional withdrawal or isolation.

Unacknowledged Potential - An opportunity that is not being appreciated or is being outright rejected.

Emotional Stagnation - A reluctance to engage with new possibilities, leading to emotional stagnation.

About the card

I placed this character in a vibrant conservatory, full of life and light, but she's not really taking any notice of anything. She even looks bored with the three cups in front of her.





FIVE OF CUPS

UPRIGHT KEYWORDS

Loss - The three overturned cups symbolise a sense of loss or regret over what has been poured out.

Mourning - The figure's black suit and the sombre setting suggest a period of mourning, with the snow-covered mountains in the background adding to the cold and desolate atmosphere.

Unrealised Joy - The presence of an unopened bottle of champagne indicates potential joy or celebration that has yet to be realized or acknowledged.

REVERSED KEYWORDS

Moving On - A move towards embracing happiness.

Acceptance - Coming to terms with past losses, and the flexibility to withstand life's challenges.

New Beginnings – New opportunities and potential for emotional renewal.

About the card

Inspired by my son's travels, I wanted the beauty of New Zealand's Mount Cook to feature in this card. The man has all he needs for a comfortable time (a tent and champagne) but he's too focused on loss to see any blessings.





SIX OF CUPS

UPRIGHT KEYWORDS

Nostalgia - The presence of children in the image evokes a sense of returning to the innocence and simplicity of childhood, a time often remembered fondly.

Joy - The colourful pinwheels, often associated with playfulness and light-heartedness, symbolise the joy and carefree nature of youth.

Generosity - The cups suggest a spirit of giving and sharing, reminiscent of the generosity often found in friendships during childhood.

REVERSED KEYWORDS

Growth - A need to grow beyond childhood memories and embrace the maturity that comes with adulthood.

Reflection - Reflection on past happiness and the desire to recapture that sense of wonder.

Self-Care – In reverse, the card can remind us to nurture our inner child.

About the card

I created several different Six of Cups until I found the characters that worked best. The six children are out of school and on an adventure at the beach with the fun of a fairground in the background. It reminded me of school trips which seemed incredibly exciting at the time.





SEVEN OF CUPS

UPRIGHT KEYWORDS

Variety - The different colour fountains in the cups represent diverse choices and opportunities.

Desire - The vending machine symbolises the longing for something that is within sight but may require effort or resources to obtain.

Aspiration - The man's worn attire suggests a yearning for improvement or the pursuit of goals that the cups might represent.

REVERSED KEYWORDS

Overwhelm - Confusion and difficulty in decision-making.

Inaccessibility - Challenges or barriers to achieving desires.

Reality Check - A need to reassess one's aspirations considering real-world constraints.



About the card

When I was young, one of my favourite parts of going swimming on a Saturday afternoon was the visit to the vending machine afterwards. I'd only have a certain amount of pocket money to spend so I had to choose carefully. I wanted to bring that idea of careful selection and options into the Seven of Cups.



EIGHT OF CUPS

UPRIGHT KEYWORDS

Contemplation - The moon often symbolises introspection and the subconscious. Its presence suggests a time for reflection.

Ascent - The mountain represents challenges, and the effort required to overcome them, indicating a journey of personal growth.

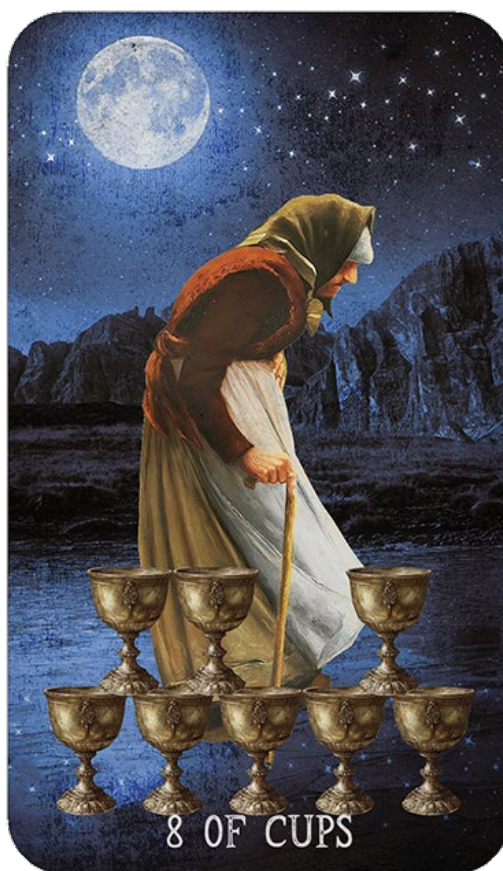
Flexibility - The hunched over old woman and her cane signify perseverance, and the support needed to continue despite difficulties.

REVERSED KEYWORDS

Resistance - A reluctance to face reality or the truth.

Obstacles - Barriers one must confront when revisiting past decisions.

Dependence - An over-reliance on others or certain beliefs that need reevaluation.



About the card

The background of this card is a moonlit beach, something not always easy to walk along especially with a cane. I wanted to depict the character walking past the upright cups, leaving behind something still viable but too heavy or not worth carrying along the path to her destination.





NINE OF CUPS

UPRIGHT KEYWORDS:

Satisfaction - The man's intertwined fingers over his chest and relaxed posture signify contentment and a sense of having achieved his desires.

Gratification - The nine cups arranged neatly behind him represent emotional and material fulfilment.

Well-being - The overall setting suggests a comfortable and prosperous state, indicating well-being.

REVERSED KEYWORDS

Complacency - Self-satisfaction that has become stagnant or taken for granted.

Unfulfilled Wishes - Despite the appearance of satisfaction, there may be deeper desires that remain unmet.

Overindulgence - Too much of a good thing might not be truly fulfilling.



About the card

As soon as I found the original painting, I knew the priest would make a perfect Nine of Cups. It reminded me of a Sunday afternoon doze after having a roast lunch followed by a cup of tea – feeling sated and content with life.



TEN OF CUPS

UPRIGHT KEYWORDS

Love and Joy - The heart-shaped toy the father dangles over the baby symbolises the pure love and joy within the family.

Emotional Spectrum - The ten cups arranged in a rainbow in the painting signify the full spectrum of emotions and blessings that the family experiences.

Domestic Harmony - The three visible houses in the painting, along with the couple's adoration for their baby, represent a stable and harmonious home life.

REVERSED KEYWORDS

Unfulfilled Desires - Unmet emotional needs or desires within the family dynamic.

Disillusionment - Unrealistic expectations or the illusion of happiness.

Disconnection - A sense of separation or alienation from the community or extended family.



About the card

I wanted to portray a feeling of emotional completeness within the 10 of Cups. I added the heart shaped toy that the father dangles in front of the baby to show that he's giving his heart to his family. The cups are on the rainbow design in the picture above the fireplace.



PAGE OF CUPS

UPRIGHT KEYWORDS

New Beginnings - The child on the card represents the start of a new emotional journey or creative endeavour.

Love - The single red rose held by the child symbolises the budding of love or the potential for new relationships.

Joyful Exploration - The sandcastle with a red flag and the bucket suggests playful creativity and the joy of building dreams.

REVERSED KEYWORDS

Emotional Growth - The need for emotional maturation or the development of deeper emotional insights.

Fleeting Moments - Transient achievements that require more substantial effort to maintain.

Unrealised Potential - Untapped potential or emotions not yet fully explored.



About the card

All the pages in this deck feature young children to show potential and opportunities for growth. This water child is already showing a romantic tendency with the rose he holds, and he also has a desire to create with the sandcastle. The background is my local beach.



KNIGHT OF CUPS

UPRIGHT KEYWORDS

Romantic Quest - The Knight's attire and the cup suggest a journey in pursuit of love or an emotional adventure.

Artistic Sensibility - The bouquet of pink roses indicates a strong creative streak and a passion for beauty.

Reflection - The pedalo in the background symbolises a calm and introspective approach to exploring feelings.

REVERSED KEYWORDS

Emotional Imbalance - The Knight may represent someone who is moody or overly idealistic about love.

Creative Block - A period where creative expression is challenged.

Hesitation - A time of contemplation before making an important emotional decision.



About the card

The romantic Knight of Cups meets you with a rose bouquet and then sweeps you away in a pink dolphin pedalo! I wanted to create a sense of romance, as if being greeted by a potential suitor, but his choice of vehicle is unconventional. It could be a lot of fun, or it could be a disaster!



QUEEN OF CUPS

UPRIGHT KEYWORDS

Compassion - The Queen seated on the throne represents a nurturing presence, full of empathy and understanding.

Intuition - Holding the golden cup, she symbolises deep intuition and emotional clarity.

Calmness - The calm sea and cloudy sky in the background reflect her serene and tranquil nature.

REVERSED KEYWORDS

Emotional Instability Fluctuating emotions or a disconnection from one's feelings.

Overwhelm Being overwhelmed by emotional undercurrents.

Dependency A tendency to rely too much on others for emotional support.



About the card

All the Queens in this deck are elevated in some way. The Queen of Cups sits above the water on a pier (it's a photo I took of Llandudno pier in North Wales) so she can view her domain. She's in control and in her element.



KING OF CUPS

UPRIGHT KEYWORDS

Compassion - Like the serene environment of an aquarium, the King of Cups' compassion is deep and encompassing, providing a tranquil refuge for the emotions of others.

Diplomacy - The crown signifies not just authority but also the king's diplomatic nature, as he rules with a gentle hand, balancing emotional needs with fairness.

Wisdom - The water reflects the king's profound wisdom and his ability to navigate through emotional depths with insight and understanding.

REVERSED KEYWORDS

Manipulation - Manipulative behaviours, suggesting a misuse of emotional intelligence.

Volatility - Potential instability in leadership, reflecting a tendency towards emotional outbursts or moodiness.

Withdrawal A journey into the subconscious, which can lead to a withdrawal from relationships and responsibilities.

About the card

Whereas the Queen sits above the water, I placed the King under the water in a modern-day aquarium. He views his domain from a privileged position, albeit one that can a bit detached.





ACE OF PENTACLES

UPRIGHT KEYWORDS:

Prosperity - The presence of the pentacle symbol, often associated with material wealth and success.

Opportunity - The door suggests the opening of new possibilities or ventures.

Abundance - The vibrant flowers and overall lushness indicate growth and flourishing resources.

REVERSED KEYWORDS

Missed Chance – Missed or overlooked opportunities, where potential for growth or abundance was present but not fully seized.

Material Loss – Financial setbacks or losses, suggesting a period of instability or depletion of resources. It can warn of poor investments, unnecessary spending, or a general failure to manage material wealth effectively.

Stagnation – A lack of movement or progress in current endeavours, manifesting as blocked pathways, delays in achieving goals, or a feeling of being stuck in place without the expected forward momentum.

About the card

I wanted to make sure this pentacle doorway had elements of its suit around it. There's the wooden door with a wooden pentacle leaning against it, flowers on the stone steps and a pint of milk for nourishment.





TWO OF PENTACLES

UPRIGHT KEYWORDS

Balance - The woman's act of balancing two children symbolise managing multiple responsibilities or priorities.

Adaptability - The market setting suggests flexibility and adjusting to changing circumstances.

Resource Management - Holding two pentacles indicates careful handling and distribution of resources or finances.

REVERSED KEYWORDS

Overwhelm - Struggling to maintain balance, indicating a feeling of being overwhelmed by responsibilities.

Mismanagement - Poor handling or loss of control over financial or physical resources.

Instability - Difficulty in achieving stability in personal or financial matters due to conflicting demands or pressures.



About the card

The original painting is the woman with her children walking away from a baby bathing experience by the sea. The way she held her children made me think of the juggling aspect of the Two of Pentacles. I put her in a supermarket because I know from experience how challenging it is to go shopping alone with two small children and you have to try not to drop them, drop the shopping and remember what you actually came into the store to buy.



THREE OF PENTACLES

UPRIGHT KEYWORDS:

Collaboration - The men working together highlight teamwork and effective collaboration.

Skill - The focus on craftsmanship or artistry, shown by the detailed work in the classical scene.

Achievement - The modern setting with the digital camera and social media hints at sharing achievements or skills.

REVERSED KEYWORDS:

Miscommunication - Problems in teamwork or project execution due to poor communication or misunderstanding.

Lack of Recognition - Skills or contributions not being acknowledged or underappreciated, indicated by the demand for likes and subscribes which may not be met.

Frustration in Collaboration - Frustration or difficulties in joint efforts, particularly when blending traditional methods with modern techniques.

About the card

This card was fun! I found the picture and I wanted to put these three men into a setting which would have a more modern outlook. Often, we share skills and work in teams digitally these days, so this Three of Pentacles is streaming or recording the boil busting procedure.





FOUR OF PENTACLES

UPRIGHT KEYWORDS:

Security - The woman's tight grip on the pentacle and protective posture suggests a focus on security and safeguarding assets.

Conservation - The careful arrangement of fruits and possessions implies prudence and conservation of resources.

Stability - The solid and grounded posture, along with the static backdrop of the van, indicates a desire for stability and resistance to change.

REVERSED KEYWORDS:

Greed - Holding tightly to the pentacles may represent greed or an unhealthy attachment to material possessions.

Materialism - An excessive focus on material wealth, at the expense of personal growth or relationships.

Inflexibility - A resistance to change or adapt, which might hinder progress and personal development.



About the card

This character is holding on so tightly to her possessions, even keeping her campervan home to her back, that there's little room for the earth energy to flow. This might be a prudent move or through fear of losing material possessions.



FIVE OF PENTACLES

UPRIGHT KEYWORDS

Displacement - The women, having stayed until closing time, find themselves excluded and displaced, symbolising a sudden change in circumstances.

Vulnerability - Their state outside the closed pub suggests a moment of vulnerability and exposure, highlighting a lack of support or security.

End of Resources - The image conveys a sense of depletion, financial or emotional, as they face the closed doors of the pub.

REVERSED KEYWORDS

Seeking Shelter - The potential for seeking new shelters or resources after being cast out, indicating a journey towards recovery.

Community Support - The possibility of finding solace or help from others, moving away from isolation.

Renewal - Despite their current plight, the situation may spur a renewal of strategies or relationships, leading to positive changes ahead.

About the card

The characters on this card were originally in a scene where the woman had fainted because she'd received a letter. I loved the dramatic scene and changed it to a boozy night out where the characters are shut out from the place that had been a refuge. There is also the chance that ill health (hangover) is predicted!





SIX OF PENTACLES

UPRIGHT KEYWORDS

Generosity - The prospector's act of pouring coins symbolises the giving of resources or support to those in need.

Charity - The presence of the older woman and children receiving aid highlights themes of charity and assistance.

Balance of Resources - The act of distributing coins suggests a balancing of wealth, where resources are shared more equitably.

REVERSED KEYWORDS

Inequality - Potential misuse or uneven distribution of resources, leading to social or economic disparities.

Dependency - A dependency on charity or external aid, which may not be sustainable long-term.

Manipulation - The possibility that generosity is being exploited or used for personal gain, rather than truly helping those in need.

About the card

This card features a scene of poverty, with a mother and her children, and a gold prospector. The characters come from different paintings. The background represents an urban street with advertisements to contrast between the large sums of money spent on advertising, poverty and the generosity of individuals.





SEVEN OF PENTACLES

UPRIGHT KEYWORDS

Patience - The calm demeanour of the woman among growing plants symbolises patience and the anticipation of results after careful nurturing.

Investment - The pots with pentacles suggest investments of time, energy, or resources that are expected to yield returns.

Reflection - The contemplative posture of the woman indicates a period of reflection on efforts and their outcomes, assessing the value of their investments.

REVERSED KEYWORDS

Frustration - Possible frustration over delays or less-than-expected returns on investments.

Dissatisfaction - Feeling dissatisfied with the progress or outcome of one's efforts, considering changes or giving up.

Impatience - A lack of patience leading to hasty decisions or abandoning projects prematurely, reflected in the potentially overgrown or neglected aspects of the garden.

About the card

I liked the calm, meditative posture of this character. She's waiting to see what will grow from her 'pentacle pots'. The plants around the room indicated that she's had success before in her endeavours.





EIGHT OF PENTACLES

UPRIGHT KEYWORDS

Mastery - The focus on detailed artisanry by the woman highlights skill development and the pursuit of mastery.

Dedication - The intense concentration and effort in perfecting her work reflect a deep dedication to her craft.

Accomplishment - The presence of many celebrated artworks around her suggests achievement and the fulfillment that comes from dedication and hard work.

REVERSED KEYWORDS

Perfectionism - An overemphasis on detail that may lead to unnecessary delays or dissatisfaction with progress.

Monotony - The repetition of tasks might become tedious or lead to a lack of inspiration and burnout.

Lack of Progress - Despite efforts, there may be a stagnation or lack of visible advancement in skills or achievements.

About the card

This woman is doodling pentacles, honing her artistic skills, so she can one day be as skilled as the artists that adorn her walls.





NINE OF PENTACLES

UPRIGHT KEYWORDS

Luxury - The lavish setting and her sophisticated attire reflect wealth, comfort, and self-sufficiency.

Achievement - Her composed demeanour and the abundance around her highlight personal achievements and financial independence.

Access - The key in her hand symbolises unlocking new opportunities or having the 'key' to achieving one's desires, emphasising control and self-reliance.

REVERSED KEYWORDS

Overindulgence - Possible excessive reliance on material comforts or superficial achievements, leading to dissatisfaction.

Isolation - While affluent, the luxuries might bring isolation or detachment from deeper, meaningful relationships.

Misplaced Priorities - Holding the key but focusing on the wrong doors or opportunities, leading to ineffective management of wealth or resources.

About the card

I often think of this as the card of self-employment, and I wanted to capture the feeling of being financially secure. The woman has the key to her future in her hand, but she's also surrounded by material success and achievements in the form of pentacles.





TEN OF PENTACLES

UPRIGHT KEYWORDS

Legacy - The presence of multiple generations and the homey, festive environment signifies a focus on family legacy and the benefits derived from it.

Abundance - The lush surroundings and decorations indicate material wealth and emotional abundance within the family setting.

Security - The family together, in a secure and happy environment, suggests a stable foundation and long-term security.

REVERSED KEYWORDS

Family Strife - Potential conflicts or misunderstandings within the family, despite external appearances of unity.

Financial Mismanagement - The risk of squandering wealth through poor management.

Inheritance Issues - Challenges related to inheritance that might disrupt harmony and financial stability.

About the card

These characters come from a painting of a South American family. I liked that they have a close bond while not being a stereotypical nuclear family unit. Keeping in line with their heritage, I placed them in a courtyard that looks warm, colourful and ready for a celebration.





PAGE OF PENTACLES

UPRIGHT KEYWORDS

Opportunity - The child holding a pentacle symbolises new opportunities, particularly in areas that require diligence and attention to detail.

Curiosity - The playful interaction with the environment suggests a curiosity and eagerness to explore and learn.

Growth - The vibrant garden setting represents growth and the nurturing of talents or investments through consistent effort.

REVERSED KEYWORDS

Lack of Focus - A lack of the necessary focus to fully capitalize on opportunities.

Wasted Potential - There might be a mismanagement or underutilization of talents.

Financial Immaturity - A lack of practical understanding about money management or financial responsibilities, despite the presence of opportunities.

About the card

This joyous little chap is having fun in a back garden, trying to capture a bee (perhaps from The Empress?), and not caring one bit that he's practically naked. There are pots behind him where, when he's ready, he can sow his pentacle.





KNIGHT OF PENTACLES

UPRIGHT KEYWORDS

Reliability - The figure's steady stance and the pentacle in his hand suggest dependability and a strong commitment to his objectives.

Persistence - His preparedness and resolve, shown by his readiness to travel even by hitchhiking, reflect determination and flexibility.

Practicality - The methodical and resourceful approach to his journey, choosing practical means to progress.

REVERSED KEYWORDS

Stagnation - A lack of movement or progress, due to over-cautiousness or resistance to change.

Procrastination - Delaying actions or decisions, which may hinder achievements and opportunities.

Inflexibility - A rigid approach that may not adapt well to new circumstances, leading to missed opportunities or inefficiencies.

About the card

The Knight of Pentacles is always the slow, steady plodder to me. I wanted to portray a sense of movement albeit a potentially slow one – hitchhiking requires patience as you never know who will stop for you or when. And when no one is stopping then you carry on walking.





QUEEN OF PENTACLES

UPRIGHT KEYWORDS

Nurturing - The abundant greenery on the balcony and her composed demeanour suggests a nurturing and caring personality, akin to a guardian of her domain.

Abundance - The vibrant display of plants and flowers around her symbolises wealth and the flourishing of her surroundings, reflecting material success and well-being.

Practicality - Her firm grip on the pentacle and grounded presence on the balcony emphasize a practical and down-to-earth approach to life and business.



REVERSED KEYWORDS

Overbearing - A tendency to be overprotective or controlling, particularly in financial and personal matters.

Neglect - Neglect of personal relationships or self-care in the pursuit of material gain.

Materialism - An excessive focus on wealth and possessions, potentially leading to a lack of fulfilment or disconnection from less tangible values.

About the card

I placed this Queen on a balcony full of flowers so she could overlook her domain (which you can't see but in my mind's eye it's a beautiful garden). Behind her is her apartment – her heart is in the security in which it brings.



KING OF PENTACLES

UPRIGHT KEYWORDS

Prosperity - The King's rich attire and confident handling of the pentacle symbolise significant material success and financial stability.

Authority - His commanding pose and luxurious surroundings denote authority and a successful command over resources.

Generosity - The act of lifting the pentacle upwards can be seen as a gesture of sharing or offering, indicating a generous spirit.

REVERSED KEYWORDS

Materialism - An overemphasis on wealth and material gain, at the expense of other values.

Stubbornness - Stubbornness or an unwillingness to adapt to innovative ideas or circumstances.

Corruption - Misuse of power or resources, or potentially unethical methods to maintain status and wealth.

About the card

This King has his feet on the ground and he's admiring a wooden pentacle. This character started life more exotic surroundings, but I think he's adjusted well to his new home with its lush plants and cottage garden vibe.





ACE OF SWORDS

UPRIGHT KEYWORDS

Readiness - The sword leaning against the door symbolises readiness and preparedness for intellectual or communicative challenges.

Potential - The position of the sword, poised but not in action, suggests potential for new intellectual endeavours or clear thinking.

Awareness - The presence of ivy and sunflowers, alongside the newspaper, indicates a state of alertness and being informed, ready to act when necessary.

REVERSED KEYWORDS

Delay - Delays or hesitation in taking decisive action or in achieving clarity.

Lack of Initiative - A reluctance to engage or take the first step towards solving problems or communicating effectively.

Misdirected Energy - Energy that is available but not yet activated, potentially leading to missed opportunities or ineffective efforts.



About the card

This door is the gateway to new opportunities and possibilities of the air element. I included an airmail letter and a newspaper to show communication and the exchange of ideas and information.



TWO OF SWORDS

UPRIGHT KEYWORDS

Indecision - The blindfold and crossed swords symbolise inner conflict and the challenge of making a difficult choice.

Balance - Her balanced posture suggests a need for equilibrium in decision-making amidst the external calm depicted by the window view.

Stalemate - The static pose indicates an impasse, where moving forward requires new insight.

REVERSED KEYWORDS

Confusion - A lack of clear direction or inability to see all sides of an issue, leading to paralysis in decision-making.

Overwhelm - The feeling of being overwhelmed by choices.

Revealed Secrets - Hidden information may become known, prompting decisive action and resolving conflicts.



About the card

The background of this card is from a photograph of my local beach on a choppy day. I haven't deviated far from the original RWS card although I placed the character inside rather than sitting outside.



THREE OF SWORDS

UPRIGHT KEYWORDS

Heartbreak - The striking visual of the swords piercing a heart, coupled with the couple's mourning, symbolises deep emotional pain and betrayal.

Shared Sorrow - The presence of both figures emphasizes shared grief or mutual loss, highlighting the impact of emotional wounds on relationships.

Catharsis - The rain and their mourning gesture suggest a cathartic release of emotions, which is crucial for healing.

REVERSED KEYWORDS

Healing Process - The beginning of recovery and mending of relationships, moving past the initial pain.

Forgiveness - The potential for reconciliation and forgiveness, leading to restored harmony.

Unresolved Issues - Despite efforts to heal, some emotional scars might remain, indicating a need for further emotional work or support.



About the card

Originally the characters on this card were in a pastoral setting. I put them into the Three of Swords because they look totally heartbroken. They're shut out of a building, sitting on the steps in the rain. There is a child's drawing of a heart in front of them with three swords going straight through it.



FOUR OF SWORDS

UPRIGHT KEYWORDS

Rest - The figure sleeping at the subway station, along with the suitcase and an additional sword beside her, symbolises a deep need for mental and physical rest.

Contemplation - The underground map in the background suggests contemplation of journeys or life paths, highlighting a period of introspection.

Refuge - The setting implies finding a temporary refuge or sanctuary in a public space, indicating a pause in her journey.

REVERSED KEYWORDS

Isolation - Feelings of isolation or detachment.

Stagnation - Prolonged inactivity or avoidance of necessary decisions.

Readiness - A need to awaken from rest and prepare for upcoming challenges, highlighting a potential lack of readiness to do so.



About the card

The character in this card is asleep on a bench with one hand clutching her travel ticket and the other holding onto her backpack. Behind her is a Tube map. I took inspiration from my younger days when sometimes London or the journey was so exhausting that you needed to rest and regroup.



FIVE OF SWORDS

UPRIGHT KEYWORDS

Conflict - The image of one woman armed with swords while the other stands without any suggests a clear conflict, indicating defeat or domination.

Defeat - The disarmed woman's stance reflects a sense of loss or surrender, underscoring a one-sided outcome to their dispute.

Injustice - The uneven distribution of swords could symbolise unfairness or manipulation, highlighting a power imbalance in their interaction.

REVERSED KEYWORDS

Recovery - Potential for recovery from past conflicts.

Reflection - A time to reflect on the consequences of the conflict, considering what has been lost and how to move forward.

Resolution - The possibility of resolving the underlying issues, moving towards a more balanced and equitable relationship.



About the card

The characters for the Five of Swords come from two different paintings but I think they work well together. The woman in the foreground appears to have gained a victory over an adversary, who has literally been shown the door.



SIX OF SWORDS

UPRIGHT KEYWORDS

Transition - The man propelling the boat through calm waters represents a journey or transition, emphasising movement away from past hardships towards a new phase.

Guidance - The presence of the lamp in the boat symbolises guidance and hope as they navigate through uncertainties, illuminating their path forward.

Protection - The positioning of the girl among the swords suggests a protective journey, moving her to safety while surrounded by potential dangers or past troubles.

REVERSED KEYWORDS

Stagnation - Difficulty in moving forward, due to unresolved issues or an unwillingness to let go of the past.

Vulnerability - Vulnerability or a feeling of isolation during a transitional phase.

Reluctance - A journey taken with hesitation or reluctance, suggesting unresolved emotions or fears about what lies ahead.

About the card

The suit of swords has many heavy hitters, so I was happy to find a more relaxed image to put into the Six of Swords. The boat carries a load of swords, and a light guides the way to solid ground





SEVEN OF SWORDS

UPRIGHT KEYWORDS

Deception - The woman's act of quietly removing the swords combined with the subtle presence of a hacker on the screen emphasizes themes of deceit and covert strategies.

Strategy - Her actions in a high-tech environment suggest careful planning and the use of strategic tactics to navigate or manipulate circumstances.

Secrecy - This scenario portrays the essence of secrecy, where actions are deliberately hidden or obscured from view, indicating clandestine operations.

REVERSED KEYWORDS

Exposure - Potential for secretive actions to become known, leading to revelations and the unveiling of hidden motives.

Consequences - A focus on the fallout from employing deceitful tactics, warning of negative outcomes and the need for accountability.

Revaluation – Reconsider the ethical standings and the sustainability of current strategies, promoting a shift towards more transparent and honest approaches.

About the card

When it came to this card I had to consider where the energy of the Seven of Swords manifests in our world and the idea of hacking or digital theft came to me. We can all related to scams, identity theft and digital deceit.





EIGHT OF SWORDS

UPRIGHT KEYWORDS

Blindness - The sleep mask on the figure highlights a metaphorical and literal inability to see the path forward, leading to feelings of entrapment.

Confinement - Surrounded by swords and isolated in a nighttime urban setting, this represents physical and psychological restrictions.

Disorientation - The presence of a map juxtaposed with the blindfold suggests confusion and the struggle to find direction or clarity.

REVERSED KEYWORDS

Awakening - The potential for removing a 'blindfold', leading to an awareness of the situation and possibilities for escape.

Freedom - The possibility of overcoming restrictions and barriers, leading to liberation and movement.

Guidance – Access to available resources to effectively navigate out of a challenging situation and reconnect with the outer world.

About the card

This character has everything she needs to move forward and into a different terrain or situation but remains in place with a sleep mask on. [OBJ]





NINE OF SWORDS

UPRIGHT KEYWORDS

Anxiety - The woman's distraught posture and the foreboding image of swords framed above her symbolise intense anxiety and mental distress.

Despair - Her overwhelming emotional state suggests deep despair or a sense of hopelessness, as if haunted by her thoughts.

Nightmare - The combination of the night-themed wallpaper and the swords depicted in the frame evoke the concept of nightmares or troubled dreams impacting her reality.



REVERSED KEYWORDS

Release - A potential easing of psychological burdens, indicating a phase of recovery where fears begin to be addressed and managed.

Hope - Finding light amidst darkness, where understanding and acceptance may lead to overcoming despair.

Insight - Clarity about one's fears and anxieties, potentially leading to significant psychological breakthroughs and emotional healing.

About the card

Some cards can't be sugar coated and the Nine of Swords is one of them. I put the woman on luxurious bedding to indicate that anxiety and nightmares happen to everyone regardless of status. The wallpaper is made of astrological signs. [OBJ]



TEN OF SWORDS

UPRIGHT KEYWORDS

Ruin - The woman slumped against the car with swords in her back symbolises a dramatic, sudden, downfall or betrayal.

Finality - The stark imagery suggests an end or conclusion to a painful episode, marking a significant and irreversible setback.

Crisis - The setting on a deserted street at sunset underscores a deep personal or existential crisis.

REVERSED KEYWORDS

Recovery - The beginning of healing from deep wounds, indicating that the worst is over and recovery is possible.

Resilience - The potential to rise again and rebuild after a devastating blow, highlighting inner strength and determination.

Release - Emphasizes the need to let go of past hurts and grievances to move forward, marking a pivotal point in personal transformation.

About the card

The character on this card has come so far!! This is a bleak card, but she can see the sun rising at the end of the street and with it perhaps she'll rise to face another day.





PAGE OF SWORDS

UPRIGHT KEYWORDS

Curiosity - The young girl's focused expression and the setting of a secret library suggest a powerful desire for knowledge and discovery.

Initiative - Her engagement with the scissors indicates a proactive approach to tasks and a willingness to explore innovative ideas.

Communication - The presence of books highlights the importance of communication and the exchange of ideas.

REVERSED KEYWORDS

Restlessness - Impatience or a tendency towards distraction, making it difficult to focus on tasks.

Miscommunication - Potential difficulties in conveying or receiving clear messages, leading to misunderstandings.

Impulsiveness - A tendency to act hastily without fully considering the consequences, leading to rushed or poorly thought-out actions.



About the card

Initially, the little girl on this card was sitting in a parlour cutting pieces of fabric. She holds the 'cutting' ability of the swords as well as having knowledge and ideas available to her. In the background is a photo of a little library I found in Bala, Wales where you were encouraged to take a used book for free. [OBJ]



KNIGHT OF SWORDS`

UPRIGHT KEYWORDS

Determination - The man's intense expression and forward movement on roller skates symbolise determination and a proactive approach to challenges.

Speed - The roller skates indicate swiftness and a sense of urgency in action, with quick thinking and decisiveness.

Courage - Holding the sword aloft reflects bravery and the readiness to face any obstacles head-on, with the background emphasising a turbulent environment.

REVERSED KEYWORDS

Impulsiveness - Rash decisions and actions taken without considering the consequences, leading to potential missteps.

Recklessness - The combination of speed and lack of foresight can result in reckless behaviour, suggesting the need for caution.

Haste - A warning against moving too quickly or without adequate preparation, which might lead to mistakes or oversights, especially in a chaotic or challenging setting.

About the card

I placed this Knight in the middle of his element – a hurricane. By wearing roller skates it could imply that he's not taking the situation seriously, enjoying the chaos rather than respecting it. Or maybe he's confident he can endure.





QUEEN OF SWORDS

UPRIGHT KEYWORDS

Clarity - The woman's focused expression and the upright sword symbolise clear thinking, sharp intellect, and the ability to see through confusion.

Independence - Her poised and regal demeanour against the vast cityscape signifies self-reliance, strength, and independence.

Perception - The elevated position and commanding view of the city reflect heightened perception and the ability to make unbiased, informed decisions.

REVERSED KEYWORDS

Coldness - Emotional detachment or harshness, suggesting the need to balance intellect with compassion.

Misjudgement - Potential for errors in judgment or misunderstanding situations due to a lack of emotional insight.

Isolation - A warning against becoming too isolated or detached from others, which might lead to loneliness or a disconnect from reality.

About the card

This Queen sits on a roof garden on a penthouse, surrounded by skyscrapers. I placed her sword higher than the background buildings to show she has dominion over her element.





KING OF SWORDS

UPRIGHT KEYWORDS

Authority - The man's regal posture and the presence of the police call box symbolise strong leadership, authority, and a firm grasp on law and order.

Intellect - The sword he holds represents sharp intellect, clear thinking, and the ability to make fair, logical decisions.

Responsibility - His serious demeanour in the urban environment signifies a sense of duty and responsibility towards justice and societal rules.

REVERSED KEYWORDS

Tyranny Misuse of power or authority, suggesting a need to avoid becoming overly controlling or oppressive.

Manipulation - Potential for using intellect and authority for deceptive or manipulative purposes, leading to mistrust.

Rigidity - A warning against becoming too rigid or inflexible in thinking, which can hinder understanding and effective decision-making.

About the card

This King started life as a fencer in an elegant oil painting and he ended up on the streets of London outside a police box. He's skilled, inspired by justice, and in charge of the situation (and you never know, he might also know how to travel through time too!).





ACE OF WANDS

UPRIGHT KEYWORDS

Inspiration - The bright red door and the illuminated surroundings symbolise a burst of creative energy and innovative ideas.

Opportunity - The prominent wand and the inviting entryway suggest new opportunities and the potential for growth and new beginnings.

Passion - The lively colours and flourishing plants indicate a surge of passion and enthusiasm in pursuits or projects.

REVERSED KEYWORDS

Blockage - Obstacles or delays in realizing innovative ideas or opportunities.

Lack of Direction - A potential struggle with focusing or channelling creative energy effectively, leading to scattered efforts.

Diminished Enthusiasm - A waning of initial excitement or passion, requiring a reassessment to reignite motivation and drive.

About the card

I wanted to make the Ace of Wands vibrant and energetic. This doorway can open up opportunities and possibilities that need a creative or passionate spark to blossom. I like to think perhaps there's a fiesta going on behind the door!





TWO OF WANDS

UPRIGHT KEYWORDS

Planning - The woman holding the globe symbolises strategic planning and consideration of future possibilities, reflecting a thoughtful approach to upcoming ventures.

Vision - The globe represents a broad vision and the ability to see the bigger picture, while the window in the background suggests openness to new opportunities.

Leadership - The clipboard with the note 'Boss Babe' emphasizes a sense of leadership and assertiveness in making decisions and guiding future directions.

REVERSED KEYWORDS

Indecision - Difficulty in making choices or a lack of clarity about the future path, causing hesitation.

Limited Perspective - A struggle to see beyond immediate circumstances.

Stagnation - An inability to move forward due to hesitation or uncertainty, leading to delays in progress and growth despite potential opportunities.

About the card

I placed this character in an office with the outside visible. She's contemplating the world in her hands because she realises that there is more to life than her immediate surroundings. She can take this contemplation and turn it into action.





THREE OF WANDS

UPRIGHT KEYWORDS

Exploration - The woman holding a wand and the travel-themed elements, such as the departure board and suitcase, symbolise the spirit of adventure and exploration of new horizons.

Preparation - The presence of the departure board and the suitcase indicates thorough preparation and planning for future endeavours.

Vision - The expansive view through the window and the inspirational travel stickers reflects a broad vision and the anticipation of future possibilities.

REVERSED KEYWORDS

Delay - Setbacks or delays in plans, as suggested by the departure board and the waiting stance.

Lack of Foresight - Difficulty in seeing the bigger picture or preparing adequately for future challenges, leading to missed opportunities.

Uncertainty - The potential for confusion or lack of clarity about the direction to take, causing hesitation and indecision.

About the card

When I read tarot, this card usually indicates travel to me, so I wanted to put this character in an airport. She's in a similar position to the Two of Wands but she's taken a step towards her vision and dreams.





FOUR OF WANDS

UPRIGHT KEYWORDS

Celebration - The joyful dancing of the women and the festive decorations signify a time of celebration, happiness, and community gatherings.

Harmony - The symmetry of the two women and the beautifully decorated setting reflects harmony, balance, and a sense of peace and contentment.

Foundation - The four wands symbolise a stable foundation and the successful completion of a significant phase or project, leading to a sense of accomplishment.

REVERSED KEYWORDS

Instability - A lack of harmony or stability, reflecting disruptions in home life or community.

Delays in Celebration - Obstacles or delays in reaching a point of celebration or achieving milestones, leading to frustration or disappointment.

Incomplete Projects - A sense of incompleteness or unfinished business that prevents fully enjoying the rewards and recognition of efforts.



About the card

My vision for this card was to have the characters welcoming you to a celebration. The background is a beautiful garden not too far away from my home in Wales.



FIVE OF WANDS

UPRIGHT KEYWORDS

Conflict - The dynamic interaction among the women with wands suggests competition, conflict, or a clash of wills, highlighting the struggle for dominance or recognition.

Challenge - The energetic scene represents challenges and the need to prove oneself, often in a competitive environment.

Diversity - The differing postures and movements of the women reflect diverse perspectives and approaches, emphasising the richness that comes from varied inputs.

REVERSED KEYWORDS

Resolution - A move towards resolving conflicts and finding common ground amidst differences.

Avoidance - A tendency to avoid conflicts or challenges, leading to unresolved issues or suppressed tensions.

Chaos - Potential for disorder or lack of structure, suggesting that conflicts or competition may become unmanageable without proper direction.

About the card

The characters on this card were initially a painting of the Pleiades. I removed two sisters and made these stars compete for attention on the red carpet.





SIX OF WANDS

UPRIGHT KEYWORDS

Victory - The woman's triumphant posture on the decorated float symbolises success and the achievement of significant milestones.

Recognition - The bouquet of flowers and the festive float with a decorative canopy indicate public acknowledgment and appreciation for one's efforts and accomplishments.

Celebration - The overall festive atmosphere, including the cobblestone street, flags in the background, and the buckets containing wands, reflects a time of celebration and honour.

REVERSED KEYWORDS

Ego - A inflated ego or overconfidence, potentially leading to arrogance or alienation from others.

Lack of Recognition - A sense of not being acknowledged or appreciated for one's efforts, leading to feelings of frustration or disappointment.

Setback - Experiencing a temporary setback or delay in achieving goals, suggesting the need for perseverance and resilience.

About the card

This character was going to be The Hanged man, but she didn't fit into my vision for the card. Now she's the wagon riding, homecoming queen.





SEVEN OF WANDS

UPRIGHT KEYWORDS

Défense - The man's stance with fists raised symbolises the need to defend oneself against challenges or opposition.

Perseverance - The numerous wands pointed towards him represent the obstacles he must overcome, emphasising determination and resilience.

Resistance - The graffiti-covered wall with messages like "No Justice" and peace symbols highlights a theme of standing firm in one's beliefs and resisting external pressures.

REVERSED KEYWORDS

Overwhelm - Feeling overwhelmed by the challenges or opposition, struggling to maintain one's position.

Vulnerability - A sense of vulnerability and a potential lack of defenses against incoming threats or criticisms.

Yielding - The possibility of giving in to external pressures or abandoning one's stance due to fatigue or discouragement.



About the card

This streetfighter is ready to take on the wands. I put him on a street with graffiti to show that he's standing up for something he believes in rather than fighting for the sake of it.



EIGHT OF WANDS

UPRIGHT KEYWORDS

Momentum - The image of the eight wands in the newspaper symbolises swift movement and rapid progress, indicating that things are moving quickly and gaining momentum.

Communication - The setting in a busy city with bright billboards suggests active communication, the spread of information, and quick exchanges.

Action - The girl's purposeful stance and the dynamic environment highlight a period of decisive action and the need to move forward with plans.

REVERSED KEYWORDS

Delay - Delays or obstacles that hinder the rapid progress.

Miscommunication - Potential misunderstandings or issues with the flow of information, causing confusion or setbacks.

Frustration - The feeling of being stuck or unable to move forward as quickly as desired, leading to frustration and impatience.

About the card

I wanted to put the newspaper seller in fast-moving, busy environment to show the speed that the Eight of Wands usually indicates. She's holding a newspaper with the wands, facing into the busy street, imprinted on it.





NINE OF WANDS

UPRIGHT KEYWORDS

Flexibility - The man's determined stance and the protective formation of wands around him symbolise resilience and the ability to withstand challenges.

Perseverance - His vigilant posture, along with the blue robe and hat, reflects perseverance and the readiness to continue despite obstacles, indicating strength and endurance.

Défense - The wands forming a fence signify a defensive stance, highlighting the importance of protecting oneself and maintaining boundaries.

REVERSED KEYWORDS

Exhaustion - Being overwhelmed or exhausted by ongoing challenges, leading to a potential need for rest.

Vulnerability - A feeling of being exposed to external pressures, suggesting a need for increased protection or support.

Reluctance - Hesitation to continue the fight or struggle, reflecting doubts about one's ability to persevere or achieve success.

About the card

This solemn piper is still standing even though he's got a few cuts and bruises along the way. The wands behind him close off the road so there's only one way forward for him.





TEN OF WANDS

UPRIGHT KEYWORDS

Burden - The man's posture and the heavy bundle of wands symbolise carrying significant burdens or responsibilities.

Endurance - Sitting on his luggage while waiting for the train signifies the endurance and patience required to manage ongoing challenges and responsibilities.

Transition - The train station setting highlights a period of transition, where despite the heavy load, the man is preparing for the next stage of his journey.

REVERSED KEYWORDS

Overwhelm - Feeling overwhelmed by responsibilities, leading to burnout and the need to lighten the load.

Relief - A potential release from burdens or a decrease in responsibilities, suggesting a moment to rest and recover.

Avoidance - Sitting and waiting might reflect avoiding responsibilities or delaying action due to the fear of being overwhelmed.

About the card

The Ten of Wands was another South American painting initially. I gave the man a heavy burden of wands and positioned him waiting for a train. He also sits on his suitcases, showing that he is carrying a far weightier load than the wands alone, but the train is almost at the station to take him home.





PAGE OF WANDS

UPRIGHT KEYWORDS

Curiosity - The young girl's attentive expression and her interaction with the cat symbolise a natural curiosity and eagerness to explore innovative ideas and experiences.

Adventure - The presence of the suitcase, travel stickers, and the camera reflect a sense of adventure and readiness for new journeys and discoveries.

Innocence - Her youthful demeanour and the playful environment highlight innocence, enthusiasm, and a fresh perspective on life.

REVERSED KEYWORDS

Restlessness - Impatience or a lack of focus, leading to scattered energy and difficulty in completing tasks.

Immaturity - Potential struggles with immaturity or impulsiveness, suggesting a need for more discipline and foresight in actions.

Hesitation - A reluctance to embark on new adventures or take risks, due to fear of the unknown or a lack of confidence.

About the card

I wanted to capture the idea of the beginnings of adventure. This Page is ready to leave the safety of her house to explore the world outside. Outside is a photo I took of the creative, artistic Northern quarter in Manchester.





KNIGHT OF WANDS

UPRIGHT KEYWORDS

Passion - The figure's energetic stance and commanding presence on the stage symbolise a fiery passion and enthusiasm for pursuits and adventures.

Confidence - The sunglasses and bold pose reflect a high level of confidence and charisma, indicating a strong and assertive personality.

Action - The dramatic lighting and stage setting emphasize a readiness for action and the drive to take on new challenges with vigour.

REVERSED KEYWORDS

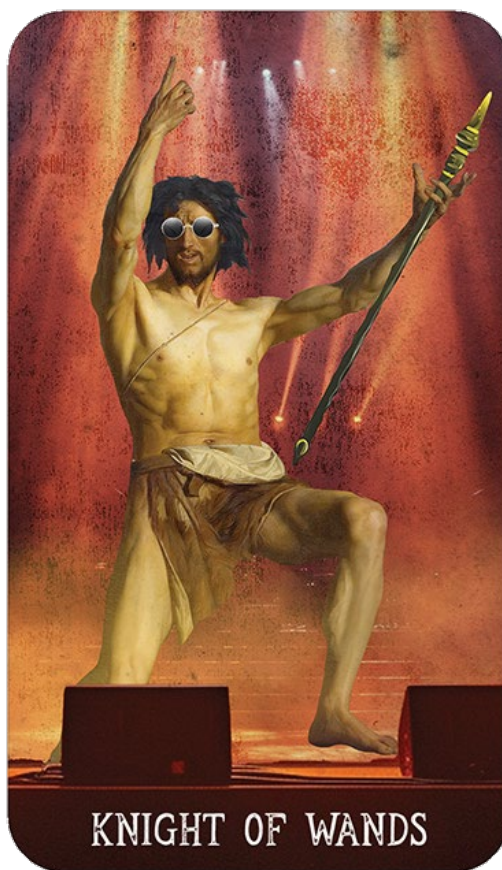
Impulsiveness - A tendency to act recklessly or without sufficient planning, leading to potential missteps.

Overconfidence - A warning against overestimating one's abilities or underestimating challenges, which can result in failure or setbacks.

Haste - Rushing into situations without proper consideration, suggesting the need to slow down and think things through before acting.

About the card

This was such a fun card to create. The Knight started out in a religious painting, but I could see he would make a great rock star. Whereas the other Knights have a connection to movement, this Knight is his own movement!





QUEEN OF WANDS

UPRIGHT KEYWORDS

Confidence - The woman's regal posture and the crown symbolise strong self-assurance and a commanding presence.

Vibrancy - The golden dress, sunflowers, and the bright appearance reflect a vibrant, energetic, and charismatic personality.

Independence - The black cat, the sign "Freedom Takes Courage," and the iron fence emphasize themes of independence, courage, and personal strength.

REVERSED KEYWORDS

Insecurity - Self-doubt or a lack of confidence, leading to hesitance in acting.

Domineering - A tendency to be overly controlling or demanding, which can strain relationships and stifle others' independence.

Burnout - Potential for exhaustion or burnout from taking on too many responsibilities or spreading oneself too thin.



About the card

This queen sits, slightly elevated, on a street outside a palace (it's Buckingham Palace in the background). Maybe her confidence and vibrant energy was too much to be contained behind iron gates and tall walls? She's accompanied by a black cat – inspired by our black street cat called Wednesday.



KING OF WANDS

UPRIGHT KEYWORDS

Leadership - The man's commanding presence on the catwalk and his confident posture symbolise strong leadership and authority.

Charisma - His bold attire and the spotlight emphasize his charismatic nature and the ability to attract and inspire others.

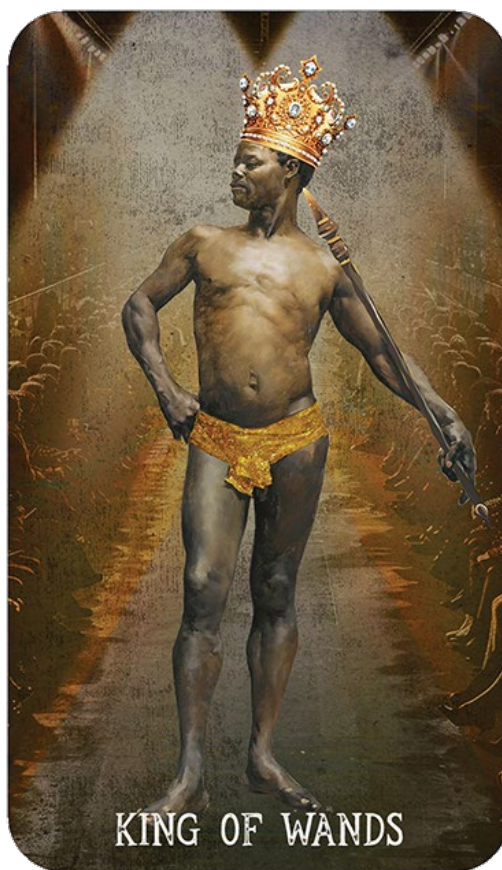
Vision - Holding the wand and striding down the catwalk represent visionary thinking and the drive to achieve ambitious goals.

REVERSED KEYWORDS

Tyranny - Misuse of power or authority, leading to a domineering or oppressive demeanour.

Insecurity - Hidden insecurities masked by a show of confidence, suggesting a need to address internal doubts and fears.

Impulsiveness - A tendency to act recklessly or make hasty decisions without fully considering the consequences.



About the card

The King of Wands, to me, always oozes charisma, confidence and charm. I've taken this character out of his original painting to let him strut his stuff on a catwalk. Paris, London, Milan? Doesn't matter. He's a commanding presence wherever he goes.

