

Quiet

Rebel

TAROT

by Lyn Thurman



The background is a vibrant pink color with a pattern of radiating lines that create a sunburst effect. Scattered throughout the background are numerous stars of varying sizes, some appearing as dark grey silhouettes and others as lighter, textured shapes.

# Quiet Rebel TAROT

by Lyn Thurman

[www.LynThurman.com](http://www.LynThurman.com)

# YOUR GUIDE TO THE QUIET REBEL TAROT DECK

The *Quiet Rebel Tarot* was created for those who don't always resonate with tradition—for those who question the rules, trust their own timing, and sense that transformation begins from within.

This isn't a deck about shouting louder or making yourself fit. It's about honouring your own rhythm, your own way of seeing, and recognising the quiet but persistent voice that says, *there's more to life than this*. That voice—the one that urges you to change, reflect, grow, or simply *pause*—is the heart of this tarot.

The deck follows the classic structure of tarot: 78 cards, divided into Major and Minor Arcana. But you'll notice some differences. The names, the imagery, and the themes have been shaped by a modern sensibility—one that values introspection, authenticity, and self-awareness. You won't find the usual clichés here. Instead, you'll find real moments: honest, strange, soulful, and sometimes uncomfortable. Just like life.

This guidebook is here to support your readings, not to define them. Each card includes a *Quiet Rebel Insight*—a short reflection to spark thought, intuition, or conversation. These are not definitive meanings but starting points, written in a voice that's hopefully more human than textbook.

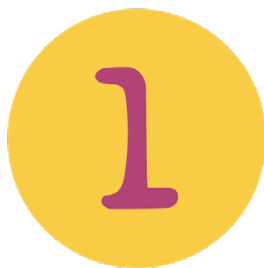
Whether this is your first deck or your fiftieth, may the *Quiet Rebel Tarot* offer you a space to reconnect—with yourself, your choices, and your own unfolding path.

You don't have to be loud to be powerful. You just have to be real.

# HOW TO USE THE CARDS

There's no single "right" way to use tarot. That said, there are ways to make your practice more meaningful, personal, and clear. The *Quiet Rebel Tarot* is designed to be flexible—whether you're reading for yourself, for others, or simply using the cards as a tool for reflection.

Here are a few gentle suggestions to get started or deepen your connection:



## CREATE A MOMENT OF PAUSE

Before you begin, take a moment. Breathe. Let the noise settle. You don't need incense, candles, or rituals (unless you want them). What matters is presence—showing up fully and honestly with whatever you're bringing to the cards.

## FRAME A QUESTION

You don't need a question, but having one helps. Aim for clarity. Instead of asking "Will I succeed?", try "What do I need to focus on to move forward?" or "What's getting in my way right now?" The cards are less about prediction and more about perspective.



## DRAW A CARD (OR SEVERAL)

Start simple. One card can speak volumes. Three-card spreads work well for clarity—past/present/future, situation/obstacle/advice, or mind/body/spirit. If you feel confident, use a spread you're drawn to—or make your own.

## LOOK, LISTEN, FEEL



What do you notice? What stands out in the image? How do you feel in response to the card? Read the *Quiet Rebel Insight* in the guidebook if it helps, but trust your own reaction. That's where the real meaning lives.

## LET THE MESSAGE LAND

Don't rush to interpret. Sit with the card for a while. Let its message unfold over hours, even days. Some cards might challenge you. Some might comfort. Both are valid. Both have something to teach.



## KEEP IT REAL



You don't need to be psychic to read tarot. You don't need to memorise meanings. Just bring your curiosity, honesty, and a willingness to explore. The cards don't judge—they reflect.

## MAKE IT YOURS

Use the cards in whatever way supports your journey. Daily draws, journalling prompts, creative inspiration, spiritual check-ins—tarot can be as practical or mystical as you like.





## DAILY DRAWS

A daily draw is one of the simplest and most powerful ways to build a relationship with your tarot deck. It's not about predicting your day or getting all the answers—it's about creating a moment of reflection and connection before the day carries you off in its current.

Here's how to approach it:

### START WITH INTENTION

You don't need to ask a big question. You can simply ask:

- *What do I need to be aware of today?*
- *What energy is with me right now?*
- *What insight will support me today?*

Let your question (or quiet curiosity) guide the draw, but don't overthink it. The act of showing up matters more than the perfect wording.

## DRAW A CARD

Shuffle the deck however you like. When it feels right, pull a single card. Notice your first reaction—before you reach for the guidebook. What do you see? How do you feel? Is there a word, image, or idea that immediately stands out?

## REFLECT AND RECORD

You might want to keep a tarot journal. Jot down the card, your thoughts, and anything that unfolds during the day that feels connected. Over time, you'll start to spot patterns, themes, and synchronicities.

This isn't about tracking your fate. It's about tracking your *awareness*.

## LET THE CARD STAY WITH YOU

You could leave the card on your desk, altar, or bedside table. You could take a photo of it and glance at it throughout the day. Sometimes its message won't make sense until later. Sometimes it lands straight away. Either is fine.

## A GENTLE REMINDER

Daily draws are meant to support you, not stress you. If you skip a day, or draw a card that confuses or annoys you, it's OK. The cards aren't here to control your life—they're here to help you listen to it more deeply.

# QUIET REBEL SPREADS

Tarot spreads offer a framework for deeper reflection—but like all good frameworks, they're meant to support, not confine. These layouts are designed with the *Quiet Rebel* in mind: someone who chooses presence over performance, self-trust over noise, and inner truth over outer expectations.

You can use these as they are or let them inspire your own versions.

## THE GENTLE REVOLT (3 CARDS)



For when you feel something stirring and change is calling.

- Card 1: *What no longer sits right with me?*
- Card 2: *What quiet truth is rising to the surface?*
- Card 3: *What's my first small act of rebellion?*

## THE SACRED PAUSE (3 CARDS)



A reflection spread for when you need to step back and breathe.

- Card 1: *What's taking up too much space in my mind or heart?*
- Card 2: *What deserves more of my attention or care?*
- Card 3: *What will support me as I soften and regroup?*

## THE ALIGNMENT CHECK (3 CARDS)



When you want to sense where your energy and intentions are landing.

- Card 1: *Where am I currently aligned with my truth?*
- Card 2: *Where am I compromising or holding back?*
- Card 3: *What small adjustment would bring me closer to wholeness?*

## THE REBEL'S NEXT STEP (3 CARDS)



Use this when you're at a crossroads or feeling unsure.

- Card 1: *What is the heart of the matter right now?*
- Card 2: *What does my soul want me to know?*
- Card 3: *What's the next brave move—even if it's quiet?*

## THE QUIET PATH FORWARD (5 CARDS)



For a bigger picture or a moment of deeper soul-navigation.

- Card 1: *Where I am standing (energetically, emotionally, spiritually)*
- Card 2: *What's ready to be released*
- Card 3: *What's quietly arriving or emerging*
- Card 4: *What might challenge or stretch me*
- Card 5: *What part of me is ready to lead the way*

# THE QUIET RECLAMATION (10 CARDS)



A spread for when you're reclaiming your voice, power, or path—gently but with unwavering intent.

Use this spread when you feel the need to come back to yourself after being pulled in too many directions, silenced, or sidelined. It's for gathering your strength, rebalancing your energy, and remembering who you are beneath the noise.

- **Card 1: Where I am now** – *A snapshot of your current state—emotionally, energetically, spiritually.*
- **Card 2: What I've been carrying** – *A belief, burden, or identity you've outgrown.*
- **Card 3: What I've forgotten** – *A truth, strength, or insight ready to be remembered.*
- **Card 4: The mask I've worn** – *A role, expectation, or persona that no longer fits.*
- **Card 5: The voice within** – *What your inner knowing is whispering now.*
- **Card 6: What deserves my devotion** – *Where your attention and energy will nourish you.*
- **Card 7: The friction point** – *A challenge, resistance, or discomfort asking to be faced.*
- **Card 8: What's quietly transforming** – *A shift already in motion, perhaps unnoticed.*
- **Card 9: My quiet rebellion** – *A step, choice, or intention that reclaims your truth.*
- **Card 10: What I'm becoming** – *A glimpse of who you are when you live on your own terms.*

This spread doesn't rush answers. You might sit with it over a few days or journal your way through it slowly. Let each card speak at its own pace.

# The Cards

# THE FREE RADICAL

Traditional Title: The Fool



## QUIET REBEL INSIGHT

If you wait for permission, you'll never start. Be your own green light. Let the world catch up to your weird later.

## CORE MESSAGE

The Free Radical is your inner spark before the plan, the unfiltered yes before doubt creeps in. It's the glorious chaos of new beginnings, where logic hasn't had time to ruin the moment. This card shows up when

you're standing on the edge of something unknown—with nothing but your instincts, wild hope, and possibly questionable footwear. It says: you don't need to have it all figured out. The map's overrated. The magic is in the momentum. This card invites you to trust the path that's calling, even if it makes no sense to anyone else (including you). It's not about being reckless—it's about being willing to risk looking foolish in order to live fully. Every Quiet Rebel has to take the first step sometime.

## SHADOW SIDE

When The Free Radical flips, it can signal hesitation, naivety, or avoidance masked as optimism. Are you diving headfirst into fantasy to avoid facing something? Or are you paralysed by overthinking, scared to begin at all? The reversed Free Radical warns against mistaking escapism for intuition. Sometimes, the bravest thing you can do is pause and check whether you're running from something or towards something.

## KEYWORDS UPRIGHT

New beginnings, leap of faith, spontaneity, fresh energy, open-hearted risk

## KEYWORDS REVERSED

Foolishness, indecision, fear of the unknown, denial, risky behaviour

## TRUTH BOMB

What would I do right now if I stopped needing it to make sense?

# THE HUSTLER

Traditional Title: The Magician



## QUIET REBEL INSIGHT

You're not here to play small or play tricks. Your voice, your vision, your weird little rituals—they matter. But only if they're aligned with your truth. Magic without meaning is just noise.

## CORE MESSAGE

The Hustler is the ultimate manifestation maven, a smooth-talking, tool-wielding force of willpower with one foot in the mystical and one

in the material. This card reminds you that you already have what you need—you just need to use it. You're not waiting for fate or permission; you're crafting reality like a back-alley alchemist with a vision board. When The Hustler shows up, it's a green light to take action, speak the spell, write the pitch, light the candle—whatever your brand of magic looks like. It's a potent mix of confidence, intention, and follow-through. This card is less "sit and receive" and more "get up and make it happen." Own your power. Channel it consciously. Don't just talk a good game—be the game.

## SHADOW SIDE

Reversed, The Hustler's charm can slip into manipulation, self-deception, or burnout masked as ambition. You might be talking the talk without backing it up, or worse—trying to manifest from ego, not truth. Are you pushing too hard? Selling yourself a fantasy? Or hustling so fast you've forgotten why you're doing it in the first place? Take a breath. Reconnect to your real power—not the shiny illusion of it.

## KEYWORDS UPRIGHT

Manifestation, confidence, skill, action, creative power, alignment

## KEYWORDS REVERSED

Manipulation, misalignment, illusion, burnout, trickery, scattered focus

## TRUTH BOMB

Am I creating from my truth—or just performing productivity?

# THE THIRD EYE SPY

Traditional Title: The High Priestess



## QUIET REBEL INSIGHT

Not everything needs to be explained. Your power lives in the space between words. If you stop performing and start listening, you'll hear what the world is really saying.

## CORE MESSAGE

The Third Eye Spy is the keeper of secrets, the whisper in the silence, and the suspiciously knowing look you get from your higher self. She's

not here to spill the tea—she’s here to make you listen. When this card appears, it’s a neon sign to tune out the noise and tune in to your intuition. Something is stirring beneath the surface, and you won’t find it through logic, Google, or asking your mates. This card urges stillness, observation, and sacred curiosity. You already know the answer—or at least, your soul does. It just needs space to speak. Don’t rush. Don’t push. Let the unseen layers rise. The Third Eye Spy invites you to trust what can’t be proven yet.

## SHADOW SIDE

In shadow, this card warns of missed messages, blocked intuition, or letting fear drown out inner truth. Are you ignoring your gut because it’s inconvenient? Are you waiting for external validation when your own knowing is screaming? Alternatively, you might be keeping secrets—not in a “mysterious and magical” way but in a “this is going to bite me later” way. It’s time to come clean, especially with yourself.

## KEYWORDS UPRIGHT

Intuition, inner knowing, mystery, sacred pause, spiritual insight

## KEYWORDS REVERSED

Mistrust, secrets, denial, blocked intuition, confusion

## TRUTH BOMB

What truth am I already sensing but still pretending not to know?

# THE BADASS GARDENER

Traditional Title: The Empress



## QUIET REBEL INSIGHT

You can't rush nature, but you can make sure the environment's right. Cultivate patience, but also recognise when to pull out the weeds.

## CORE MESSAGE

The Badass Gardener is the nurturing force that knows how to work both the earth and the hustle. She's the embodiment of abundance, creativity, and the power of patience. When this card blooms into your

reading, it's an invitation to step into your full creative potential—whether that's in your career, relationships, or self-expression. But here's the thing: growth takes time. It takes dedication. And it takes care. You don't have to be perfect, but you do need to be present. The Badass Gardener reminds you to feed what you've planted, water your dreams, and trust the cycle of growth. No one gets to the top without getting their hands dirty. Stay grounded. Stay focused. And remember, what you nurture will one day flourish beyond your wildest expectations.

## SHADOW SIDE

When reversed, The Badass Gardener might point to neglect or overindulgence. Are you abandoning your creative projects? Have you left something to wither on the vine because you've taken on too much? Alternatively, this could signal an excess of control, trying to force growth when the soil isn't ready. Maybe it's time to step back and assess—what are you feeding, and is it really serving you?

## KEYWORDS UPRIGHT

Abundance, fertility, creativity, nurturing, growth, motherhood

## KEYWORDS REVERSED

Neglect, overcontrol, stunted growth, frustration, imbalance

## TRUTH BOMB

What part of my life have I neglected that actually needs nurturing, not more hustle?

# THE RULE BREAKER

Traditional Title: The Emperor



## QUIET REBEL INSIGHT

You don't need permission to take up space, and you don't need approval to make an impact. Lead with clarity, but don't confuse control with freedom.

## CORE MESSAGE

The Rule Breaker is the unapologetic leader who doesn't ask for permission to take control. He's the rebel with a vision, the one who

has mastered the art of structure—but only by designing it himself. When this card appears, it's time to stop asking for validation and start commanding your own space. Your power comes not from conforming, but from creating a world that aligns with your truth. This card is about leadership on your terms—bold, strategic, and fiercely independent. Whether it's a new project, a career shift, or a life-changing decision, The Rule Breaker urges you to take the reins. Own your power, trust your instincts, and lead from a place of authenticity, not authority for the sake of it.

## SHADOW SIDE

In its reversed form, The Rule Breaker might be a sign of power struggles or rebellion without a cause. Are you resisting authority just for the sake of it? Or perhaps you're trying to hold on too tightly to something that's already slipping away. The shadow side of this card warns against dictating for ego's sake rather than for a higher purpose. It might also signal fear of taking the leap into leadership or a lack of boundaries.

## KEYWORDS UPRIGHT

Leadership, independence, strategy, personal power, authority, self-mastery

## KEYWORDS REVERSED

Power struggles, control issues, insecurity, authoritarian tendencies, lack of boundaries

## TRUTH BOMB

Where in my life am I still waiting for permission?

# THE UNOFFICIAL GUIDE

Traditional Title: The Hierophant



## QUIET REBEL INSIGHT

You don't need to fit into the mould—just make your own shape. Learn from the past, but make it your own.

## CORE MESSAGE

The Unofficial Guide is the rebellious teacher who doesn't follow the curriculum. She's here to break down the barriers between what's "official" and what's possible. This card signals a time to question

authority and explore alternative paths to knowledge. Tradition doesn't have to be the blueprint—it can be the starting point for your unique journey. When The Unofficial Guide shows up, it's asking you to dive deeper into your beliefs and the systems you follow. Are they serving you, or are they just things you've inherited without question? Maybe it's time to explore unconventional wisdom or seek a mentor who speaks your language. The key is to find your own truth and follow it, even if it means stepping off the beaten path.

## SHADOW SIDE

When reversed, The Unofficial Guide warns against blind adherence to outdated systems or groupthink. Are you too focused on rebellion for the sake of it, without any real purpose? Perhaps you're resisting valuable lessons because they don't come wrapped in the package you expected. Alternatively, this card can signal feeling stuck in tradition or dogma, unable to see beyond the familiar.

## KEYWORDS UPRIGHT

Alternative paths, questioning authority, non-conformity, wisdom, spiritual growth, mentorship

## KEYWORDS REVERSED

Stagnation, rigid thinking, resistance to change, following blindly, lack of guidance

## TRUTH BOMB

What beliefs am I following that I never agreed to?

# THE RISKY BUSINESS

Traditional Title: The Lovers



## QUIET REBEL INSIGHT

Playing it safe is fine—unless your soul wants the thrill of the unknown. Choose with heart, not habit.

## CORE MESSAGE

The Risky Business is all about bold choices and electric connections. It brings a flashpoint moment—where your heart says one thing, your head says another, and the stakes feel high. This card is more than

romance (though it can absolutely mean that too); it's about aligning with what truly lights you up, even if it's not the 'sensible' option. When this card slides into view, something or someone is asking for your full attention. Whether it's a partnership, passion project, or life-altering decision, the universe is pushing you to choose with conviction. Love or logic? Passion or prudence? There's no wrong answer—but once you pick your path, walk it fully.

## SHADOW SIDE

In its reversed position, The Risky Business can point to indecision, temptation, or being torn between conflicting desires. It might reflect a lack of clarity about what you truly want—or the fear of what you might lose by choosing. This card also warns against superficial choices or connections based on fleeting thrills rather than soul-alignment.

## KEYWORDS UPRIGHT

Passion, meaningful choices, alignment, desire, relationships, commitment

## KEYWORDS REVERSED

Indecision, misalignment, superficiality, temptation, disharmony

## TRUTH BOMB

Am I choosing what I really want—or what I think I should want?

# THE WILD RIDE

Traditional Title: The Chariot



## QUIET REBEL INSIGHT

Forward motion means nothing if you're heading in the wrong direction. Aim first. Then hit the accelerator.

## CORE MESSAGE

The Wild Ride is your cosmic green light. It's fast, it's furious, and it's fuelled by razor-sharp focus and unshakable drive. This card appears when there's no room for hesitation—it's time to charge ahead,

leaving doubts in the dust. No more sitting in the slow lane wondering if you're ready. Spoiler: you are. But this isn't about reckless speed or aimless acceleration; it's about strategic determination and knowing how to channel your energy effectively. The Wild Ride reminds you that progress is a delicate balance of holding steady through the chaos, knowing when to push harder and when to guide the reins with precision. You've got the willpower, the ambition, and the clarity to get where you're going. Just make sure you've mapped out your destination first. After all, forward motion means little without a clear goal on the horizon.

## SHADOW SIDE

Reversed, The Wild Ride can feel more like a runaway train than a strategic sprint. Maybe you're moving fast but going nowhere, or stuck in neutral because you've lost sight of your goal. This card can also warn of internal conflict—your head wants one thing, your heart another, and your spirit's spinning donuts in the car park. Get realigned before you burn out.

## KEYWORDS UPRIGHT

Momentum, willpower, direction, ambition, victory, progress

## KEYWORDS REVERSED

Lack of control, internal conflict, aimlessness, burnout, stagnation

## TRUTH BOMB

Is my ambition fuelled by alignment—or adrenaline?

# THE BEAST WHISPERER

Traditional Title: Strength



## QUIET REBEL INSIGHT

You don't have to fight your demons—just make eye contact and speak softly. That's when they start to listen.

## CORE MESSAGE

The Beast Whisperer isn't here to dominate, tame, or fight. She connects. She soothes the chaos with quiet confidence and inner calm. This card is a reminder that true strength isn't about brute force—it's about

emotional mastery, resilience, and grace under pressure. Strength is found in the ability to remain composed, even when everything around you feels overwhelming or wild. When The Beast Whisperer appears, you're being asked to lead with compassion, especially when faced with something untamed—be it in others or within yourself. It's a call to tap into your calm centre and handle the storm with steady hands. There's no need to bark orders or resort to harsh measures when your presence and steady energy speak volumes.

## SHADOW SIDE

Reversed, The Beast Whisperer can signal inner battles you're trying to control through suppression or overreaction. Maybe you're losing patience, or your confidence is shot. This card can also reflect someone trying to dominate a situation out of fear, not strength. When force takes over, connection is lost.

## KEYWORDS UPRIGHT

Inner strength, compassion, resilience, calm authority, emotional balance

## KEYWORDS REVERSED

Self-doubt, impatience, forcefulness, fear-driven actions, inner conflict

## TRUTH BOMB

Where am I trying to force something I could simply hold with grace?

# THE SOLO MISSION

Traditional Title: The Hermit



## QUIET REBEL INSIGHT

There's gold in your own stillness. Don't fear the quiet—it's where your answers live.

## CORE MESSAGE

The Solo Mission calls you inward. It's the quiet nudge to step back from the noise, ditch the distractions, and reconnect with your inner compass. This card isn't about isolation for the sake of it—it's about

seeking clarity, truth, and personal insight away from the pull of everyone else's expectations. When The Solo Mission appears, it's time for sacred solitude. You might be soul-searching, re-evaluating your path, or simply needing a breather from the world's chaos. It's a chance to gather wisdom not from outside advice but from your own lived experience. The lantern only lights the next step, but that's more than enough.

## SHADOW SIDE

Reversed, The Solo Mission can suggest hiding out for too long—retreat turning into avoidance. Maybe you're stuck in overthinking mode, avoiding people, or using "inner work" as an excuse not to engage with life. Alternatively, it can reflect fear of being alone or discomfort with your own company. Solitude should recharge you, not drain you.

## KEYWORDS UPRIGHT

Reflection, inner guidance, solitude, soul-searching, personal truth

## KEYWORDS REVERSED

Isolation, avoidance, overthinking, loneliness, fear of introspection

## TRUTH BOMB

When was the last time I truly listened to myself without outside noise?

# THE COSMIC ROULETTE

Traditional Title: Wheel of Fortune



## QUIET REBEL INSIGHT

The universe isn't random—it's just wilder than you expected. Don't fear the turn. Play the game.

## CORE MESSAGE

The Cosmic Roulette reminds you that life isn't linear—it swirls, it swerves, it surprises. When this card appears, something's shifting. You're in the spin cycle of fate, synchronicity, and those eyebrow-raising

“coincidences” that aren’t really coincidences at all. This card whispers that change is coming—maybe it’s already here. Sometimes you’re on top of the wheel, riding high. Other times, you’re hanging on upside down, wondering who greased the axle. Either way, the movement’s necessary. The Cosmic Roulette teaches trust, adaptability, and knowing when to release the illusion of control.

## SHADOW SIDE

Reversed, this card can feel like bad timing, stuck cycles, or resistance to inevitable change. You might be gripping too tightly to what’s familiar, or blaming fate instead of looking at your patterns. It can also reflect a fear of the unknown or forgetting that luck favours those who dare the spin.

## KEYWORDS UPRIGHT

Destiny, change, synchronicity, luck, cycles, movement

## KEYWORDS REVERSED

Resistance, stagnation, misalignment, poor timing, stuck patterns

## TRUTH BOMB

What would shift if I trusted the chaos instead of fighting it?

# THE KARMA COP

Traditional Title: Justice



## QUIET REBEL INSIGHT

Accountability isn't punishment—it's power. And fairness? That's the real rebellion.

## CORE MESSAGE

The Karma Cop is less about punishment and more about alignment. This card is the universe holding up a mirror and asking, "Are you walking your talk?" It's about cause and effect, truth and consequence,

and owning your role in the script you're writing. When this card shows up, something's coming into balance—be it a decision, a relationship, or a karmic return on past actions. It can also call you to seek fairness, speak your truth, or take accountability (even if it's uncomfortable). The Karma Cop doesn't deal in fluff—only facts, fairness, and the odd divine nudge.

## SHADOW SIDE

Reversed, The Karma Cop might be out of uniform. Injustice, denial, or avoidance of responsibility could be at play. Maybe you're being too hard on yourself—or not hard enough. There may be dishonesty around you, or inside you. Something's off-kilter, and it's time to realign. Don't avoid the truth just because it's messy.

## KEYWORDS UPRIGHT

Truth, balance, fairness, karma, integrity, accountability

## KEYWORDS REVERSED

Injustice, denial, imbalance, dishonesty, avoidance

## TRUTH BOMB

Where in my life do I need to take radical responsibility?

# THE REALITY DROPOUT

Traditional Title: The Hanged Man



## QUIET REBEL INSIGHT

You're not behind—you're in the void. And sometimes the void is the only place that tells the truth.

## CORE MESSAGE

The Reality Dropout isn't stuck—they've opted out. This card is the rebel's pause, the sacred suspension, the moment you stop trying to force progress and instead allow a deeper truth to surface. It's a

voluntary time-out from business as usual to gain a completely new perspective. It shows up when you need to see things differently. You're being invited to surrender control, lean into uncertainty, and let go of the ego's timeline. Enlightenment comes not through pushing forward but by hanging in the liminal space, where insight drips in when you least expect it.

## SHADOW SIDE

Reversed, The Reality Dropout can feel like limbo that's gone on far too long. You might be clinging to outdated perspectives, refusing to budge, or trying to avoid discomfort by spiritually bypassing the mess. It may also signal martyrdom—sacrificing too much for something that doesn't return the same energy.

## KEYWORDS UPRIGHT

Surrender, perspective shift, pause, letting go, spiritual insight

## KEYWORDS REVERSED

Stagnation, avoidance, victimhood, resistance, over-sacrifice

## TRUTH BOMB

What truth might appear if I stopped trying to fix everything?

# THE END GAME

Traditional Title: Death



## QUIET REBEL INSIGHT

Endings aren't failures—they're initiations. What dies isn't wasted; it's compost for the future.

## CORE MESSAGE

The End Game isn't about doom—it's about evolution. This card signals that something is ending, yes, but only because it's no longer part of your becoming. Old roles, beliefs, relationships, or stories are expiring

to make way for something truer. It's transformation in its most raw form—liberating, necessary, and not always gentle. Grieve what was, but don't cling. This is the natural shedding of a skin you've outgrown. The End Game says: something has served its purpose. Honour it, then move forward.

## SHADOW SIDE

Reversed, The End Game suggests resistance to change or fear of letting go. You might be clinging to a version of life—or yourself—that no longer fits. It can also signal prolonged endings, emotional paralysis, or denial about what needs to shift. The more you avoid it, the messier it becomes.

## KEYWORDS UPRIGHT

Transformation, endings, release, transition, evolution

## KEYWORDS REVERSED

Resistance, fear of change, stagnation, emotional clinging

## TRUTH BOMB

What am I clinging to that's already finished?

# THE MAD SCIENTIST

Traditional Title: Temperance



## QUIET REBEL INSIGHT

Harmony isn't found—it's created. And sometimes it takes a few wild experiments to get it right.

## CORE MESSAGE

The Mad Scientist doesn't play by the rules of balance—they invent new ones. This card is about blending, experimenting, and discovering your own rhythm by throwing out the step-by-step instructions. It shows up

when it's time to mix opposing forces—light and shadow, intuition and logic, chaos and calm—and create something beautifully unexpected. You're not being called to "be moderate" but to master your unique formula. The Mad Scientist encourages conscious integration, not bland compromise.

## SHADOW SIDE

Reversed, this card can signal imbalance, burnout, or a refusal to adapt. You might be clinging to control, resisting flow, or trying to force a formula that just doesn't work anymore. It can also hint at overindulgence, emotional extremes, or losing sight of the bigger picture.

## KEYWORDS UPRIGHT

Integration, balance through creativity, healing, inner alchemy, flow

## KEYWORDS REVERSED

Extremes, disconnection, misalignment, imbalance, resistance to change

## TRUTH BOMB

Where in my life am I still trying to force a formula that doesn't fit?

# THE STICKY SITUATION

Traditional Title: The Devil



## QUIET REBEL INSIGHT

The trap only works if you forget you have the key.

## CORE MESSAGE

The Sticky Situation is the card of entrapments—some seductive, some self-inflicted. It shows up when you're caught in something that feels good... until it doesn't. This could be toxic habits, obsessive thinking, unhealthy relationships, or the illusion that you're powerless. But

here's the twist: the chains? They're usually of your own making. This card doesn't judge—but it does shine a big, awkward light on your shadows. You've got more choice than you think. The Sticky Situation wants you to get real about what's holding you back—and why you might be choosing to stay stuck.

## SHADOW SIDE

Reversed, this card signals a potential breakthrough. You might be waking up to your own patterns and reclaiming your autonomy. Or, it could be a sign that you're still knee-deep in denial and avoiding accountability. Either way, the grip is loosening—or you've got the bolt cutters in hand.

## KEYWORDS UPRIGHT

Addiction, temptation, shadow work, entrapment, power struggles

## KEYWORDS REVERSED

Release, breaking patterns, liberation, avoidance, reclaiming control

## TRUTH BOMB

What uncomfortable truth am I avoiding by staying stuck in something that drains me?

# THE 'OH CRAP' MOMENT

Traditional Title: The Tower



## QUIET REBEL INSIGHT

When everything falls apart, don't just rebuild—reinvent.

## CORE MESSAGE

The 'Oh Crap' Moment is divine demolition. This card shows up when the false foundations of your life—beliefs, structures, identities—come crashing down. It's a shock, sure, but one that clears space for the truth to finally grow. It might feel like chaos, but it's disruption with

a purpose. Sometimes the universe doesn't whisper; it bulldozes. And while that may sting, there's liberation in the rubble. What's collapsing wasn't stable to begin with. Let it fall.

## SHADOW SIDE

Reversed, this card can hint at resisting change or trying to patch up a structure that's already crumbling. You might be delaying the inevitable or pretending the tremors aren't happening. On the other hand, it can also indicate the aftermath—the dust is settling, and clarity is beginning to form.

## KEYWORDS UPRIGHT

Sudden change, disruption, awakening, collapse, truth revealed

## KEYWORDS REVERSED

Resistance to change, aftermath, lingering chaos, delayed breakdown

## TRUTH BOMB

What part of my life is built on a story I no longer believe?

# THE ETERNAL OPTIMIST

Traditional Title: The Star



## QUIET REBEL INSIGHT

Staying hopeful isn't weakness. It's an act of quiet defiance.

## CORE MESSAGE

The Eternal Optimist is the light that remains after everything else has gone dark. This card brings a calm, cosmic reassurance: you're on the right path, even if you can't quite see the destination yet. It's about faith—not blind belief, but a quiet inner knowing that healing

is happening, even when it's slow. Inspiration is returning. Your magic is real. The Eternal Optimist asks you to keep dreaming, to trust the process, and to remember that your presence alone sends ripples of light into the world.

## SHADOW SIDE

Reversed, this card may signal doubt, disillusionment, or feeling disconnected from your sense of purpose. Maybe the world feels heavy and your inner light flickers. But this is not the end—only a pause. The spark's still there, even if it's buried under cynicism or burnout.

## KEYWORDS UPRIGHT

Hope, inspiration, renewal, spiritual guidance, healing

## KEYWORDS REVERSED

Disconnection, despair, creative block, questioning your path

## TRUTH BOMB

What dream still matters—even if I've stopped saying it out loud?

# THE SHADOW ASSASSIN

Traditional Title: The Moon



## QUIET REBEL INSIGHT

Your shadows aren't out to get you—they're waiting to be understood.

## CORE MESSAGE

The Shadow Assassin slips in when reality gets murky. This is the realm of dreams, fears, and illusions—the stuff that creeps in when logic sleeps. You may be sensing something's off but can't quite name it. This card nudges you to trust your intuition, even if the path feels foggy. It's

a reminder that not everything hidden is dangerous—sometimes it's just waiting to be seen. Pay attention to symbols, gut feelings, and the stories you're telling yourself in the dark. The Shadow Assassin doesn't deal in clear answers but invites you to sit with mystery and explore the emotional undercurrents.

## SHADOW SIDE

Reversed, this card can reflect emotional confusion, secrets coming to light, or being trapped in fear-based illusions. You might be overthinking, overwhelmed by anxiety, or ignoring your instincts. Alternatively, it may indicate a slow emergence from the fog—a truth revealing itself.

## KEYWORDS UPRIGHT

Intuition, illusion, mystery, dreams, emotional depth

## KEYWORDS REVERSED

Confusion, deception, fear, anxiety, truth emerging

## TRUTH BOMB

What part of myself have I buried because it made others uncomfortable?

# THE GOOD VIBES ONLY

Traditional Title: The Sun



## QUIET REBEL INSIGHT

Happiness is a form of resistance. Let yourself enjoy the sunshine.

## CORE MESSAGE

This is your glow-up moment. The Good Vibes Only arrives with a blast of optimism, clarity, and well-earned confidence. It's not about perfection or pretending things are fine—it's about recognising your own light and letting it shine, unapologetically. Things are aligning.

You're in a space where your energy can attract the right people, opportunities, and outcomes. This card invites you to be fully present, to savour what's good, and to remember that joy isn't something to earn—it's something to reclaim. When The Good Vibes Only shows up, it's a cosmic green light. You're being encouraged to embrace happiness, celebrate your wins (big or small), and stop dimming your brilliance for the comfort of others.

## SHADOW SIDE

You might be faking the smile, avoiding discomfort, or telling yourself you "should" be happy when you're not. Reversed, this card highlights inauthentic positivity or the pressure to perform joy. Step back. Feel what's real. Joy will return—but it needs truth to thrive.

## KEYWORDS UPRIGHT

Joy, vitality, confidence, celebration, clarity

## KEYWORDS REVERSED

Forced positivity, burnout, hiding emotions, discomfort with visibility

## TRUTH BOMB

Have I mistaken being "positive" for being honest?

# THE CHECKPOINT

Traditional Title: Judgement



## QUIET REBEL INSIGHT

You're not here to stay the same. Evolve, and embrace the shift.

## CORE MESSAGE

The Checkpoint is a moment of reckoning. It's not about past mistakes, but about seeing yourself clearly and making decisions from that perspective. This card calls you to evaluate your path and ask whether your choices align with your true desires. It's a chance to release old

patterns or self-limiting beliefs that have been holding you back. The Checkpoint encourages self-forgiveness and a shift in perspective, allowing you to embrace a new chapter. It's the universe's nudge to rise, take stock, and act from a place of self-awareness and purpose. This isn't about judgement in the typical sense—it's an invitation to step into your own power, free from the baggage of past decisions.

## **SHADOW SIDE**

Reversed, The Checkpoint may indicate you're avoiding a much-needed self-evaluation. You might be clinging to outdated identities or resisting change, stuck in a cycle of self-criticism. This card reversed calls for a deeper look at where you're holding yourself back and the excuses you're making to stay stagnant.

## **KEYWORDS UPRIGHT**

Self-reflection, renewal, self-forgiveness, clarity, transformation

## **KEYWORDS REVERSED**

Stagnation, resistance to change, self-doubt, stuck in the past

## **TRUTH BOMB**

What truth do I need to face to move forward?

# THE MIC DROP

Traditional Title: The World



## QUIET REBEL INSIGHT

When you own your achievements, you give others permission to do the same.

## CORE MESSAGE

The Mic Drop marks the culmination of your journey—everything clicks into place, and you realise that what you've been working towards is here. This is the moment of completion, of seeing how all the pieces

fit together, and recognising the growth you've achieved. It's a card of triumph, but not just the kind that shows up in the spotlight. It's the quiet victory of knowing you've done the work, you've learned the lessons, and now it's time to celebrate the full circle of your efforts. Whether this manifests as a tangible achievement or an inner sense of peace, The Mic Drop is a reminder that the cycle is complete, and the stage is yours. It's also an invitation to expand—what's next? With this completion comes the opening of new horizons. The end of one chapter is always the beginning of another.

## SHADOW SIDE

Reversed, The Mic Drop may indicate unfinished business or the fear of success. You might be doubting your ability to truly step into your full power or holding onto a past chapter out of comfort. This is the universe's call to step fully into the next phase without fear or hesitation.

## KEYWORDS UPRIGHT

Completion, triumph, fulfillment, expansion, recognition

## KEYWORDS REVERSED

Unfinished business, fear of success, self-doubt, resistance to change

## TRUTH BOMB

What cycle is complete—and why am I still holding on?

# THE HEART OPENER

Traditional Title: Ace of Cups



## QUIET REBEL INSIGHT

Tenderness isn't weakness—it's your superpower.

## CORE MESSAGE

The Heart Opener marks a fresh emotional beginning. It's the first crack in the armour, the moment you realise your heart is wide open and something beautiful wants to pour through. This could be new love, a spark of deep connection, or simply feeling emotionally alive after a long

dry spell. There's a softness here, but also courage—because it takes guts to be open in a world that often rewards emotional detachment. Whether this card arrives as a new relationship, creative inspiration, or spiritual awakening, it reminds you that connection is sacred. Let yourself receive. Let yourself feel. There's magic in vulnerability, and The Heart Opener is your permission slip to say yes to it all.

## SHADOW SIDE

Reversed, this card can signal blocked emotions or a heart that's been shut down by past hurt. You might be scared to feel too much, or you're pouring from an empty cup. It's a nudge to pause, tend to your own emotional well-being, and gently reconnect with what you've been avoiding.

## KEYWORDS UPRIGHT

New feelings, emotional awakening, love, intuition, vulnerability

## KEYWORDS REVERSED

Emotional block, burnout, disconnection, unexpressed feelings

## TRUTH BOMB

What part of me is ready to feel again—even if it scares me?

# THE SWEET EXCHANGE

Traditional Title: Two of Cups



## QUIET REBEL INSIGHT

Not every bond is meant to last, but each one teaches you something real.

## CORE MESSAGE

The Sweet Exchange is all about mutual connection—those moments where two people meet with honesty, openness, and respect. It's not about fairy-tale perfection, but about real emotional reciprocity.

Whether it's a romantic bond, a deep friendship, or an unexpected alliance, this card signals that something beautiful is forming (or being renewed) between two souls. There's a sense of ease here—a shared understanding, even if you're different in many ways. You're not trying to fix or rescue each other; you're simply holding space and showing up. This card invites you to celebrate the sweetness of being truly seen and appreciated. It's a gentle affirmation that you don't have to do it all alone—connection is part of your path, and it strengthens you.

## SHADOW SIDE

Reversed, The Sweet Exchange might point to imbalance, miscommunication, or emotional co-dependence. Maybe you're giving more than you're receiving, or trying to force a connection that's run its course. It's time to assess whether the relationship (or situation) honours your energy or drains it.

## KEYWORDS UPRIGHT

Partnership, mutual respect, connection, harmony, emotional intimacy

## KEYWORDS REVERSED

Imbalance, disconnection, co-dependence, crossed wires

## TRUTH BOMB

What does honest connection look like for me—and where am I faking it?

# THE FUNSLINGERS

Traditional Title: Three of Cups



## QUIET REBEL INSIGHT

Joy is revolutionary and contagious. Make room for it, especially when life feels heavy. There's power in pleasure.

## CORE MESSAGE

The Funslingers ride in when it's time to drop the seriousness and connect through joy. This card is all about community, shared laughter, and raising a glass (real or metaphorical) with your people. It's a

reminder that celebration isn't frivolous—it's a vital part of being human. Whether you're gathering with close friends, marking a milestone, or simply enjoying a rare moment of ease, this card encourages you to be fully present. Relish it. Let yourself be supported and uplifted by others who get you. The Funslingers know that healing can happen through shared stories and clinking glasses. It's the medicine of togetherness. And even if there's nothing "big" going on, it's a nudge to create joy for joy's sake.

## SHADOW SIDE

Reversed, this card can point to isolation, exclusion, or overindulgence. Maybe you're feeling left out of the fun, or you're chasing the party to avoid sitting with your feelings. It could also signal friendships that once felt nourishing but now feel performative. Time for a little honesty about who—and what—truly lifts your spirit.

## KEYWORDS UPRIGHT

Celebration, friendship, joy, support, community

## KEYWORDS REVERSED

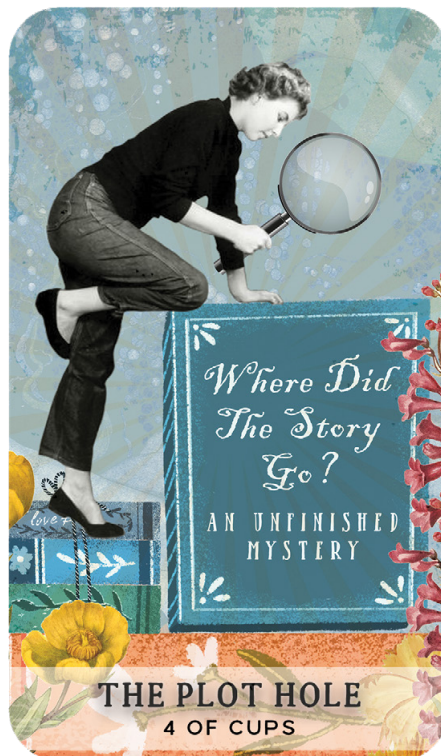
Loneliness, people-pleasing, excess, surface-level connections

## TRUTH BOMB

When was the last time I truly let joy carry me—and what's stopping me now?

# THE PLOT HOLE

Traditional Title: Four of Cups



## QUIET REBEL INSIGHT

Dissatisfaction isn't failure—it's a sign your soul wants more than the script you've been handed.

## CORE MESSAGE

The Plot Hole appears when you're feeling underwhelmed, stuck, or emotionally disconnected. Life may be offering options, but none of them seem to hit the mark. You might be drifting through the motions,

knowing something's off, but not quite sure what. This card doesn't point to a lack of opportunity—it points to a lack of resonance. You're being invited to pause, reflect, and ask: "Is this really what I want, or just what I've been taught to want?" Sometimes dissatisfaction is a sign of growth. What used to fit no longer does. It's not a time to force enthusiasm or grab at shiny distractions. Let the discomfort point you toward what's missing. Something deeper is trying to get your attention—if you slow down long enough to listen.

## SHADOW SIDE

Reversed, The Plot Hole may signal emotional apathy turning into self-sabotage. You might be rejecting support or opportunities out of fear, stubbornness, or plain old burnout. It's okay to not be okay—but don't let discontent close your heart. There is something better. You just need to stay open to it.

## KEYWORDS UPRIGHT

Discontent, apathy, withdrawal, inner searching, emotional restlessness

## KEYWORDS REVERSED

Missed opportunities, rejection, numbness, spiritual boredom

## TRUTH BOMB

What am I tired of pretending is "good enough"?

# THE LETDOWN

Traditional Title: Five of Cups



## QUIET REBEL INSIGHT

You're not "on the shelf"—you're in a holding pattern of your own making. Hang up the phone. Choose now.

## CORE MESSAGE

The Letdown speaks to the ache of unmet expectations. The figure on this card waits in quiet limbo, perched 'on the shelf' with an old telephone in hand—holding space for something (or someone) that

may never return. It's the emotional hangover that comes when hope lingers longer than it should. You may be wrestling with ghosted feelings—left wondering what went wrong, why closure never came, or why something once promising just... fizzled. This card validates the sting of that experience without sugar-coating it. But here's the deeper truth: the longer you keep waiting, the longer you stay disconnected from your present. The Letdown asks you to stop hitting replay and start writing a new chapter. Not out of bitterness, but out of self-respect.

## SHADOW SIDE

Reversed, The Letdown can reveal an unwillingness to let go of emotional dead-ends. Maybe you're idealising the past, or hoping someone finally sees your worth. It might also hint at internalised shame—blaming yourself for something that wasn't yours to carry. It's time to reclaim your shelf space.

## KEYWORDS UPRIGHT

Emotional limbo, disappointment, unspoken endings, longing, self-worth

## KEYWORDS REVERSED

Idealisation, rumination, letting go, internalised grief, delayed healing

## TRUTH BOMB

What story am I still grieving—and is it time to write a new one?

# THE TIME CAPSULE

Traditional Title: Six of Cups



## QUIET REBEL INSIGHT

Your past isn't dead weight—it's the soil your present grows in. Choose what you cultivate.

## CORE MESSAGE

The Time Capsule is a trip down memory lane—but it's not just about nostalgia for the sake of it. This card asks: what stories from your past still shape who you are today? Are they comforting foundations or

dusty myths you've outgrown? This isn't just about reminiscing; it's about reconnecting with emotional truths that have staying power. Maybe it's a childhood dream, a long-lost friendship, or a version of yourself you've buried beneath adult obligations. The Time Capsule invites you to open it gently, see what still holds meaning, and decide what's worth bringing into the now. It can also signify kindness, generosity, or emotional warmth—connections that feel familiar even if they're new. Whether it's a literal reconnection or a symbolic one, this card reminds you that not all good things are ahead of you. Some live quietly in your past, waiting to be remembered.

## SHADOW SIDE

Reversed, The Time Capsule might signal living too much in the past or romanticising it beyond reality. You could be stuck in "better days" thinking, which makes it harder to be present or plan ahead. Alternatively, an unresolved emotional pattern from your past might need to be acknowledged and released.

## KEYWORDS UPRIGHT

Nostalgia, roots, emotional warmth, reconnection, innocence

## KEYWORDS REVERSED

Sentimentality, stuck in the past, emotional loops, unresolved memories

## TRUTH BOMB

What part of my past still holds wisdom—and what needs releasing?

# THE WILD GOOSE CHASE

Traditional Title: Seven of Cups



## QUIET REBEL INSIGHT

Not every option deserves your energy. Ditch the distractions. Choose the vision that feels like truth, not ego.

## CORE MESSAGE

The Wild Goose Chase arrives when your imagination is in overdrive and your options seem endless—but none of them feel quite grounded. It's the card of daydreams, distractions, and delusions in seductive

packaging. Think: glittering fantasies, tempting shortcuts, or grand visions without a plan. This card often shows up when your intuition is being drowned out by noise—external promises, internal cravings, or the fear of making the wrong choice. The Wild Goose Chase doesn't say you're foolish for dreaming—it warns you not to confuse fantasy with clarity. It also points to decision fatigue. You may be overwhelmed, trying to chase every possibility at once instead of aligning with the one that actually fits.

## SHADOW SIDE

Reversed, this card can signal paralysis or escapism. Perhaps you've been chasing illusions to avoid something uncomfortable—or you're clinging to a fantasy because the truth feels too dull or too hard. It can also mean you're finally beginning to see through the smoke and mirrors, ready to commit to a more honest path.

## KEYWORDS UPRIGHT

Illusion, choices, temptation, wishful thinking, scattered energy

## KEYWORDS REVERSED

Clarity dawning, escapism, decision paralysis, discernment

## TRUTH BOMB

What fantasy have I outgrown—and what truth am I avoiding because it's not as shiny?

# THE DONE & DUSTED

Traditional Title: Eight of Cups



## QUIET REBEL INSIGHT

Peace isn't always found in staying. Sometimes, it lives in the leaving.

## CORE MESSAGE

The Done & Dusted is the moment you quietly slip out the side door of something you've outgrown. No dramatic goodbyes. No need for applause. Just a knowing that it's time to walk away—for real this time. This card is less about heartbreak and more about emotional clarity.

There's something—an old dream, relationship, role, or belief—that no longer nourishes you, even if it once did. Staying would mean shrinking. So you don't. The choice to leave may not make sense to others. You might not even have a clear picture of what comes next. But your soul is already halfway out the door, and that instinct deserves your trust.

## SHADOW SIDE

Reversed, this card can suggest lingering too long in emotional no-man's land—half out, half in. You may be afraid to admit something's run its course, or worried about what comes after you let go. It can also hint at restlessness without direction—leaving just to escape, rather than to evolve.

## KEYWORDS UPRIGHT

Letting go, emotional evolution, quiet endings, inner truth, soul call

## KEYWORDS REVERSED

Avoidance, fear of change, drifting, stuck in-between, unfinished emotional business

## TRUTH BOMB

What quiet knowing have I been ignoring about something that's already over?

# THE WISH GRANTED

Traditional Title: Nine of Cups



## QUIET REBEL INSIGHT

You're allowed to be satisfied. Don't downplay your joy—or chase someone else's version of it.

## CORE MESSAGE

The Wish Granted is a card of emotional fulfilment, simple pleasures, and the rare joy of actually getting what you wanted. It's the kind of magic that feels earned—whether through resilience, intention, or

sheer alignment. This card says: look around. Something you once longed for is now part of your reality. But this isn't about grand finales. It's about recognising contentment in the moment. It may be a personal achievement, a longed-for relationship, or simply a feeling of deep satisfaction. Whatever the form, the message is clear: your joy is valid. Drink it in. Sometimes, this card also suggests the power of manifesting with clarity. When you know what you truly want—and not what you're supposed to want—wishes have a funny way of coming true.

## SHADOW SIDE

Reversed, The Wish Granted can point to fleeting pleasures, shallow wins, or desires that didn't fulfil you the way you expected. You might've chased something only to realise it wasn't aligned after all. Or perhaps your happiness is being delayed by emotional blocks or self-sabotage.

## KEYWORDS UPRIGHT

Fulfilment, contentment, success, emotional satisfaction, alignment

## KEYWORDS REVERSED

Hollow gains, misaligned goals, dissatisfaction, blocked joy

## TRUTH BOMB

Am I actually enjoying what I once asked for—or have I moved the goalpost again?

# THE HAPPY LITTLE CULT

Traditional Title: Ten of Cups



## QUIET REBEL INSIGHT

Find a group that lets you be you—not the version they want you to be.

## CORE MESSAGE

The Happy Little Cult is the card of contentment, unity, and finding your people—though they may not always look like you expected. This card celebrates the comfort and support of a group that feels like home,

even if it's unconventional or unexpected. It's not about perfection; it's about authenticity in connection. You've found your tribe—or at least, you're on the way there. It could be a close-knit circle of friends, a creative team, or a community that aligns with your values and quirks. This isn't about fitting into society's norms; it's about creating a space where you belong, exactly as you are. However, there's a subtle warning in the card. Even the most supportive groups can get a bit too insular. The Happy Little Cult asks you to check if your sense of belonging is open to growth, or if it's becoming a self-contained echo chamber. Are you truly free to be your authentic self, or are you subconsciously conforming to a group's unspoken rules?

## SHADOW SIDE

Reversed, this card might signal disconnection, isolation, or a cult-like group dynamic that feels stifling rather than liberating. You may feel emotionally boxed in, or like you're sacrificing too much to belong.

## KEYWORDS UPRIGHT

Community, belonging, authenticity, emotional fulfillment, found family

## KEYWORDS REVERSED

Isolation, groupthink, stifled individuality, toxic dynamics, emotional emptiness

## TRUTH BOMB

Does my version of belonging allow me to be fully myself—or just the most acceptable version?

# THE HEART STIRRER

Traditional Title: Page of Cups



## QUIET REBEL INSIGHT

That tug in your chest? Follow it. Even if it's vague, even if it's tender.

## CORE MESSAGE

The Heart Stirrer is the card of emotional curiosity and fresh beginnings. It's about tapping into your intuition, feeling out the world around you, and being open to new emotional experiences. There's an innocence to this card, a sense of childlike wonder and fascination with what

could be. It's the spark of possibility—a reminder to listen to your inner voice and follow the emotional breadcrumbs that lead to something meaningful. This is the messenger of new emotional journeys, whether it's a budding relationship, an uncharted creative pursuit, or a deeper connection with yourself. Your feelings are guiding you in a direction of discovery and growth.

## SHADOW SIDE

Reversed, The Heart Stirrer can point to emotional immaturity or a reluctance to embrace vulnerability. You may be avoiding your feelings or not taking them seriously enough. There might be an emotional disconnect or a lack of emotional depth in the current situation.

## KEYWORDS UPRIGHT

Emotional exploration, creativity, new beginnings, intuition, curiosity

## KEYWORDS REVERSED

Immaturity, emotional avoidance, emotional blockages, fear of vulnerability

## TRUTH BOMB

What tender idea or emotion am I ready to explore—if I stop editing it first?

# THE MOOD RIDER

Traditional Title: Knight of Cups



## QUIET REBEL INSIGHT

Romance the vision, but pack your common sense. A dream worth chasing will ask you to feel deeply—and still keep your feet on the ground.

## CORE MESSAGE

The Mood Rider is a passionate adventurer who follows their emotional compass above all else. It's the card of pursuing dreams, diving

headfirst into relationships, or chasing inspiration with unwavering enthusiasm. The Mood Rider isn't afraid to show their emotions or act on them—this card is about following your heart, wherever it leads. But it's not all flowery idealism. There's a drive here, a sense of pursuit that's both romantic and purposeful. This is someone who wants to bring their emotional world into the real world, whether through artistic expression, love, or purpose-driven actions.

## SHADOW SIDE

Reversed, The Mood Rider can indicate emotional burnout or the risk of chasing unattainable fantasies. It might suggest an emotional rollercoaster or a tendency to act impulsively, ignoring the consequences of following desires without grounding.

## KEYWORDS UPRIGHT

Passion, creativity, emotional pursuit, romantic gestures, following the heart

## KEYWORDS REVERSED

Unrealistic expectations, emotional burnout, impulsive actions, chasing unattainable ideals

## TRUTH BOMB

What dream am I chasing—and is it truly mine or someone else's ideal?

# THE TIDE TURNER

Traditional Title: Queen of Cups



## QUIET REBEL INSIGHT

You don't need to fix everyone. Be the calm in the storm, not the sponge that soaks it all up. Compassion works best when it includes you.

## CORE MESSAGE

The Tide Turner is the embodiment of emotional depth, intuition, and nurturing. She is the compassionate caretaker of herself and others,

able to navigate emotional seas with grace and understanding. This card represents someone deeply in tune with their feelings, with the wisdom to listen to their own emotional currents while also offering a steadying presence for others. Whether you're in a position of emotional support or learning to honour your own emotions, The Tide Turner reminds you that emotional intelligence is a quiet, powerful force. It's the power to transform turbulent emotions into a steady flow that carries you forward.

## SHADOW SIDE

Reversed, The Tide Turner can suggest emotional overwhelm or being too caught up in the feelings of others, to the point of losing your own balance. You may be giving more than you have to offer or allowing your emotions to cloud your judgment.

## KEYWORDS UPRIGHT

Emotional intelligence, nurturing, intuition, self-care, emotional wisdom

## KEYWORDS REVERSED

Emotional overwhelm, burnout, losing self in others' emotions, unbalanced nurturing

## TRUTH BOMB

Where do I need to hold myself with the same compassion I give to others?

# THE PEACEKEEPER

Traditional Title: King of Cups



## QUIET REBEL INSIGHT

Emotional strength doesn't mean silence—it means staying present when the water gets rough. Lead with calm, not control.

## CORE MESSAGE

The Peacekeeper is the steady captain of his own emotional ship, and the one who brings calm to stormy waters. He is emotionally mature, understanding the ebb and flow of feelings, and using that awareness to

guide both himself and others. This card signifies mastery of emotional intelligence, and the ability to navigate challenging situations without losing your cool. When the Peacekeeper appears, it's an invitation to take control of your emotional responses, to show compassion without losing boundaries, and to embrace emotional wisdom in leadership. He's a reminder that strength isn't about controlling feelings—it's about flowing with them.

## SHADOW SIDE

Reversed, The Peacekeeper can indicate emotional suppression or the inability to express emotions effectively. You might be keeping your feelings bottled up or not allowing yourself to feel fully. Alternatively, you could be using emotional control as a form of manipulation or detachment.

## KEYWORDS UPRIGHT

Emotional maturity, leadership, emotional intelligence, calm, compassion

## KEYWORDS REVERSED

Emotional suppression, detachment, controlling emotions, manipulation

## TRUTH BOMB

Where in my life am I choosing control over emotional honesty?

# THE WILD IDEA

Traditional Title: Ace of Pentacles



## QUIET REBEL INSIGHT

Every revolution starts with a seed. You don't need certainty—just the nerve to plant it and the patience to see what grows.

## CORE MESSAGE

The Wild Idea is the spark of tangible potential—something solid, real, and ripe for nurturing. It could be a business venture, a new income stream, a shift in lifestyle, or even an investment in your wellbeing.

You've got a seed in your hand; what you do with it next is what counts. This card is an invitation to take that idea, hunch, or opportunity and turn it into something lasting. But it's also a reminder: don't expect overnight miracles. Real-world magic takes time, effort, and care. Still, the energy is promising—what you're holding now has the power to grow roots and bear fruit, if you're willing to get your hands dirty.

## SHADOW SIDE

Reversed, The Wild Idea might indicate hesitation to act, missed opportunities, or putting your energy into ventures that lack true value. It can also signal scarcity thinking—clinging too tightly to comfort zones or ignoring potential due to fear of failure.

## KEYWORDS UPRIGHT

New opportunities, material beginnings, investment, stability, grounded potential

## KEYWORDS REVERSED

Missed chances, wasted potential, fear of failure, short-term thinking

## TRUTH BOMB

What opportunity am I holding back on because I'm scared it might actually work?

# THE BEAUTIFUL MESS

Traditional Title: Two of Pentacles



## QUIET REBEL INSIGHT

There's beauty in the mess when you stop striving for flawless and start trusting your rhythm.

## CORE MESSAGE

The Beautiful Mess captures the glorious chaos of doing all the things at once—juggling responsibilities, spinning ideas, and trying to keep life in motion without dropping a ball (or your sanity). This card doesn't

demand perfection; it celebrates adaptability, resilience, and the art of riding life's waves with style. You're managing a lot, and somehow you're pulling it off—though it might not look pretty from the outside. The key is to stay fluid, flexible, and present. Prioritise what truly matters, and give yourself permission to release anything that feels forced or draining. This is about flow, not control.

## **SHADOW SIDE**

When reversed, this card warns of burnout, overwhelm, or the illusion of balance. You might be saying yes to too much or scattering your energy. Take a beat. What can you delegate, delay, or let go of? The cost of doing everything could be doing nothing well.

## **KEYWORDS UPRIGHT**

Time management, flexibility, multi-tasking, adaptability, priorities

## **KEYWORDS REVERSED**

Overwhelm, imbalance, stress, poor planning, scattered focus

## **TRUTH BOMB**

What do I keep juggling that no longer deserves space in my hands?

# THE WORK IN PROGRESS

Traditional Title: Three of Pentacles



## QUIET REBEL INSIGHT

You're not here to have it all figured out—you're here to build something that matters. Keep showing up, even if your hands are still learning.

## CORE MESSAGE

The Work in Progress is a nod to collaboration, craftsmanship, and the slow magic of building something that matters. You might be learning new skills, refining a project, or working with others to bring a shared

vision to life. The energy here is industrious, grounded, and fuelled by the quiet thrill of watching something take shape. There's no rush—this is the card of thoughtful creation. Your efforts are beginning to show, and even if it's not finished, you're on the right track. Value the process as much as the outcome. Don't be afraid to ask for input or recognise the talents around you; this card thrives in teamwork and mutual respect.

## SHADOW SIDE

Reversed, this card can point to friction in collaboration, ego clashes, or feeling unrecognised for your contribution. Alternatively, you might be trying to go it alone when a fresh perspective or expert help could move things along. Progress may stall when pride gets in the way of cooperation.

## KEYWORDS UPRIGHT

Teamwork, skill-building, progress, shared goals, grounded creativity

## KEYWORDS REVERSED

Creative friction, going solo, lack of recognition, stalled momentum

## TRUTH BOMB

Where in my life am I building something that matters—even if it's still messy?

# THE SECURITY BLANKET

Traditional Title: Four of Pentacles



## QUIET REBEL INSIGHT

Holding tight doesn't always mean you're safe—it might just mean you're stuck. Check what you're clinging to, and why.

## CORE MESSAGE

The Security Blanket represents safety, stability, and the desire to hold on tight—to money, possessions, routines, or even identities. There's nothing wrong with seeking security. In fact, it might be exactly

what you need right now: a moment to protect your resources, set boundaries, or get your foundations in order. But there's a fine line between feeling grounded and getting stuck. This card asks you to check whether your comfort zone has become a cage. What are you holding onto that no longer serves you? Are you clinging out of fear, or choosing with intention?

## SHADOW SIDE

When reversed, this card often points to scarcity thinking, fear of loss, or over-identifying with status or wealth. It may also suggest financial instability or a resistance to share—be it time, energy, or resources. Loosening your grip might feel risky, but liberation rarely happens with white knuckles.

## KEYWORDS UPRIGHT

Stability, boundaries, conservation, protecting resources, control

## KEYWORDS REVERSED

Fear of loss, stinginess, insecurity, stuck energy, resistance to change

## TRUTH BOMB

What am I gripping so tightly it's become a prison instead of protection?

# THE CASUALTY

Traditional Title: Five of Pentacles



## QUIET REBEL INSIGHT

Hard times don't define you. You're not broken—you're between chapters. Look up. Help might be closer than you think.

## CORE MESSAGE

The Casualty is the raw, uncomfortable card of hardship—financial, emotional, or spiritual. It speaks to times when you feel shut out, unsupported, or like you've fallen through the cracks. It's the "why

me?" moment, the silent struggle, the part of the story where the light feels far off. But this card is also about perspective. Look again—help may be closer than you think. You're not without options, even if they don't look how you expected. This card reminds you to reach out, ask for what you need, and remember that being in a low place doesn't make you low. It's a chapter, not a conclusion.

## SHADOW SIDE

Reversed, The Casualty can indicate lingering victimhood or the fear of being vulnerable. It might also point to recovery—finally seeing a glimmer of hope or stepping out of isolation. Be mindful of beliefs that keep you small. You are not your circumstances.

## KEYWORDS UPRIGHT

Hardship, exclusion, financial strain, loneliness, struggle

## KEYWORDS REVERSED

Recovery, hope, renewed connection, support, shifting mindset

## TRUTH BOMB

Where have I mistaken a rough patch for a dead end?

# THE TIP JAR

Traditional Title: Six of Pentacles



## QUIET REBEL INSIGHT

Giving is sacred. So is receiving. Don't turn either into a performance. Let generosity be a clean, quiet exchange.

## CORE MESSAGE

The Tip Jar is about give and take, in all its forms—money, time, energy, attention. It reminds you that generosity can be an act of rebellion in a world obsessed with scarcity and self-interest. This card invites you

to notice where the scales are balanced in your life, and where they're not. Are you the giver, the receiver, or somewhere in between? There's no shame in either role—what matters is the spirit behind it. Giving with resentment or receiving with guilt muddies the waters. True generosity flows cleanly. Whether you're being supported or offering support, let it come from a place of integrity and respect.

## SHADOW SIDE

Reversed, this card may point to strings-attached generosity, power imbalances, or burnout from overgiving. It can also signal an unwillingness to ask for help, or a fear of dependency. Not every exchange needs to be transactional. The energy of abundance expands when shared freely and consciously.

## KEYWORDS UPRIGHT

Generosity, balance, support, mutual aid, conscious giving

## KEYWORDS REVERSED

One-sidedness, resentment, conditional help, imbalance, martyrdom

## TRUTH BOMB

Where do I need to rebalance the give and take in my life?

# THE WAITING GAME

Traditional Title: Seven of Pentacles



## QUIET REBEL INSIGHT

You're not stuck—you're growing roots. Not everything rushes to bloom. Some things are becoming beneath the surface.

## CORE MESSAGE

The Waiting Game is the slow-burn card of effort, patience, and delayed gratification. You've planted the seeds, done the graft, and now you're in that awkward limbo—too far in to quit, not quite at the payoff. This

card reminds you that meaningful progress often happens beneath the surface. It's a chance to pause and reassess. Are you investing in the right thing? Is your energy going towards something that will eventually bear fruit—or are you nurturing a dead end? The Waiting Game doesn't ask for blind persistence, but conscious cultivation. Step back, breathe, and trust the process (or pivot, if needed).

## SHADOW SIDE

Reversed, this card can point to impatience, frustration, or pouring effort into something that's not delivering. You might feel like giving up—or like you've waited too long already. It could also suggest a fear of committing at all, worried the results won't be worth it. If it's worth growing, it's worth tending to.

## KEYWORDS UPRIGHT

Patience, long-term vision, cultivation, assessment, steady progress

## KEYWORDS REVERSED

Impatience, wasted effort, frustration, doubt, fear of commitment

## TRUTH BOMB

What am I nurturing right now—and is it truly worth the wait?

# THE NEW RECRUIT

Traditional Title: Eight of Pentacles



## QUIET REBEL INSIGHT

Consistency is its own kind of magic. Mastery doesn't arrive—it accumulates. Honour the grind. It's sacred.

## CORE MESSAGE

The New Recruit is the card of apprenticeship, focus, and the sacred grind. It doesn't promise instant rewards or shortcuts—it's about putting in the reps. Whether you're honing a craft, learning a skill,

or building something meaningful, this card celebrates the beauty of steady effort. You're not expected to have it all figured out. You're expected to commit, to care, and to keep refining. Every task, no matter how small, contributes to the bigger picture. This is your invitation to take pride in the process, not just the result. If you're showing up with heart, you're already winning.

## SHADOW SIDE

Reversed, this card might indicate boredom, burnout, or feeling stuck in the details. Maybe you've lost sight of why you started. It can also point to perfectionism or reluctance to put in the work at all. It's okay to be tired—but don't forget what you're building. Reconnect to your why.

## KEYWORDS UPRIGHT

Diligence, learning, dedication, craft, steady growth

## KEYWORDS REVERSED

Disinterest, burnout, lack of focus, perfectionism, cutting corners

## TRUTH BOMB

Where am I being called to commit, even if the path ahead looks long?

# THE LIFE UPGRADE

Traditional Title: Nine of Pentacles



## QUIET REBEL INSIGHT

Luxury is not just about possessions—it's about the richness of your own life, lived on your own terms.

## CORE MESSAGE

The Life Upgrade is the card of flourishing, independence, and enjoying the rewards of your hard work. You've put in the effort, built a solid foundation, and now you get to live the life you've created. This

card celebrates personal achievement, self-sufficiency, and the joy that comes from being comfortable in your own skin. It's a moment of luxurious reflection—whether you're soaking in the fruits of your labour or taking stock of how far you've come. You've earned this. The energy of the Life Upgrade is about enjoying the fruits of your success and stepping into a higher level of personal power. You've mastered your domain, and now it's time to reap the rewards.

## SHADOW SIDE

Reversed, this card may indicate dissatisfaction despite external success. You might feel lonely, disconnected, or unfulfilled, even when everything seems to be in place. There could be a lingering fear that your success is shallow or undeserved. It might also point to a reluctance to embrace abundance or take the next step in your personal evolution.

## KEYWORDS UPRIGHT

Success, independence, personal achievement, rewards, comfort

## KEYWORDS REVERSED

Unfulfilled success, loneliness, superficiality, fear of abundance

## TRUTH BOMB

What success have I downplayed that deserves to be fully claimed?

# THE FULL HOUSE

Traditional Title: Ten of Pentacles



## QUIET REBEL INSIGHT

Legacy isn't just about what you leave behind—it's how you live now. Build something that outlasts the trends and outshines the noise.

## CORE MESSAGE

The Full House is the card of legacy, long-term success, and the security that comes from building something solid over time. This is the wealth that goes beyond material—it's family, community, tradition, and

the long-lasting impact of your efforts. It speaks to the satisfaction that comes from creating a foundation that will support not just you, but generations to come. Whether it's your career, relationships, or creative projects, this card celebrates enduring success and the fruits of long-term planning. You've got the big picture in focus. You've laid a stable, secure foundation that has the potential to continue to provide for you and your loved ones in the future. The Full House invites you to recognise that true wealth isn't just about what you have right now—it's about what you leave behind.

## SHADOW SIDE

Reversed, this card can point to insecurity, instability, or concerns about your long-term future. You might feel like you're putting in all the work without seeing the lasting results. It can also suggest a disconnect from family, tradition, or a sense of community. The fear of losing what you've built might hold you back from embracing growth.

## KEYWORDS UPRIGHT

Legacy, wealth, security, tradition, long-term success, family

## KEYWORDS REVERSED

Insecurity, instability, short-sightedness, fear of loss, disconnected legacy

## TRUTH BOMB

What kind of legacy am I creating—and is it aligned with what I truly value?

# THE SEED SOWER

Traditional Title: Page of Pentacles



## QUIET REBEL INSIGHT

You don't need the whole plan—just the courage to start. The first step plants the future. Honour that beginning like it matters. Because it does.

## CORE MESSAGE

The Seed Sower is all about new beginnings, opportunities, and the excitement of laying the first stone of something significant. This card

is the spark that ignites growth—a fresh idea, a new project, or an exciting venture. It reminds you that all great things start small, and now is the perfect time to plant the seeds of your future. There’s an energy of focus and curiosity surrounding The Seed Sower. It’s not about rushing forward, but about taking that first, deliberate step towards a goal. Whether it’s a new career, relationship, or creative pursuit, the energy of this card encourages you to invest in the long term. Trust in the process, be patient, and know that with time and care, your efforts will grow.

## SHADOW SIDE

Reversed, The Seed Sower can indicate a lack of follow-through, hesitation, or scattered energy. You may feel uncertain about taking the first step or fear that your efforts won’t amount to anything. It can also point to a need to assess whether you’re planting in fertile ground or just chasing empty dreams.

## KEYWORDS UPRIGHT

New beginnings, potential, focus, opportunity, early stages, growth

## KEYWORDS REVERSED

Hesitation, lack of follow-through, scattered energy, wasted potential

## TRUTH BOMB

What small, deliberate step can I take today toward long-term growth?

# THE STEADY PLODDER

Traditional Title: Knight of Pentacles



## QUIET REBEL INSIGHT

There's nothing flashy about showing up every damn day—but that's where the real magic lives. Keep going. Slow isn't the same as stuck.

## CORE MESSAGE

The Steady Plodder is the card of methodical progress, perseverance, and dedication to the long haul. This knight doesn't rush to the finish line—instead, they focus on building solid, sustainable results. With

this energy, it's less about the sprint and more about the marathon. Whether you're working on a project, relationship, or personal growth, this card speaks to the power of steady, consistent effort. You're in it for the long game, committed to the task at hand. Your attention to detail, reliability, and work ethic will carry you forward. The Steady Plodder is an invitation to stay grounded, keep your eyes on the prize, and understand that progress is made through persistence. It's not glamorous, but it's the kind of effort that leads to lasting success.

## SHADOW SIDE

Reversed, this card can indicate a reluctance to move forward, stuck in the weeds of routine without seeing the bigger picture. You might be afraid to take risks, or you could be feeling bored with the slow pace. There may also be a tendency to become too focused on perfection, which hinders progress.

## KEYWORDS UPRIGHT

Perseverance, reliability, dedication, steady progress, hard work

## KEYWORDS REVERSED

Stagnation, overthinking, perfectionism, fear of movement, lack of progress

## TRUTH BOMB

What am I willing to keep showing up for, even when the results are slow?

# THE NEST MAKER

Traditional Title: Queen of Pentacles



## QUIET REBEL INSIGHT

Tending to life is a radical act. Build a space that feeds your soul and holds your dreams—then invite others in without losing yourself.

## CORE MESSAGE

The Nest Maker is the card of nurturing, practicality, and creating a secure, loving environment. She embodies the energy of balance between work, home, and self-care. This queen is grounded,

resourceful, and devoted to making things flourish, whether it's her family, her finances, or her own personal growth. The Nest Maker knows how to manage the physical and emotional aspects of life, ensuring everything has a solid foundation. With her wisdom, you're encouraged to find harmony in your daily life. You're capable of creating a space—physically, mentally, or emotionally—that supports your long-term stability and wellbeing. It's about tending to the needs of yourself and others, and knowing that true success comes when you've built something that nurtures all aspects of life.

## SHADOW SIDE

Reversed, The Nest Maker might signal a need to slow down and reassess your priorities. Perhaps you've been overextended, neglecting self-care, or losing sight of what truly matters. It can also indicate a tendency to become too focused on external comforts at the expense of inner harmony.

## KEYWORDS UPRIGHT

Nurturing, practicality, security, balance, resourcefulness, caring

## KEYWORDS REVERSED

Overwork, neglecting self-care, instability, imbalanced priorities

## TRUTH BOMB

How can I better care for myself while still holding space for others?

# THE EMPIRE BUILDER

Traditional Title: King of Pentacles



## QUIET REBEL INSIGHT

Success isn't about what you've got—it's about what you grow. Lead with purpose. Build like it's going to last.

## CORE MESSAGE

The Empire Builder is the card of wealth, mastery, and long-term success. This king is a visionary and a provider, capable of creating lasting prosperity not just for himself, but for others as well. He

knows how to build, maintain, and grow his resources, whether that's financial, physical, or even relational. With his grounded approach, he transforms ideas into reality and sustains his empire with discipline, wisdom, and patience. When this card appears, it's a reminder to tap into your own potential for creating lasting stability and security. The Empire Builder encourages you to take charge of your resources and manage them wisely, with an eye on both immediate rewards and future sustainability. You're being asked to take the reins of your destiny and start building your own legacy.

## SHADOW SIDE

Reversed, The Empire Builder may point to an unhealthy focus on materialism or control, where the pursuit of wealth and success comes at the expense of relationships or personal wellbeing. You might be hoarding resources, feeling overly possessive, or struggling with fear of loss. There could be a warning to reassess your priorities and ensure that your pursuit of stability doesn't turn into a cage.

## KEYWORDS UPRIGHT

Success, mastery, wealth, stability, security, responsibility, legacy

## KEYWORDS REVERSED

Materialism, greed, control, fear of loss, imbalance, neglect of relationships

## TRUTH BOMB

What am I building that will still matter ten years from now?

# THE SPARK OF MADNESS

Traditional Title: Ace of Swords



## QUIET REBEL INSIGHT

Truth doesn't always arrive politely. Sometimes it crashes in like lightning. Let it unsettle you. Then let it guide you.

## CORE MESSAGE

The Spark of Madness is the card of new ideas, truth, and mental clarity. Like a sudden flash of insight, this Ace brings a breakthrough that can cut through confusion and reveal the raw truth of a situation. It is a

card of inspiration and mental power, offering you a fresh perspective or a sudden understanding that can shift the course of your journey. Whether it's a solution to a long-standing problem or a new idea that ignites your passion, this card marks the start of something mentally powerful. When this card appears, it's an invitation to harness the power of your mind and let your ideas flow freely. This is the beginning of a new thought process or mental breakthrough that can pave the way for change. Trust in your intuition and intellect to guide you.

## SHADOW SIDE

Reversed, The Spark of Madness can indicate confusion, miscommunication, or mental blockages. You may be caught in a tangle of conflicting ideas, or you might be struggling to see the truth of a situation. It can also signal a need to rethink your approach or reassess your perspective, especially if you've been clinging to false beliefs or misdirection.

## KEYWORDS UPRIGHT

Clarity, new ideas, truth, breakthrough, mental power, insight

## KEYWORDS REVERSED

Confusion, miscommunication, mental block, distorted thinking

## TRUTH BOMB

What truth am I finally ready to see clearly, even if it changes everything?

# THE TURNING POINT

Traditional Title: Two of Swords



## QUIET REBEL INSIGHT

You can wait forever for certainty, or you can choose. Stuck is still a decision.

## CORE MESSAGE

The Turning Point is the card of choices, balance, and decision-making. In this moment, you stand at a crossroads, facing a decision that will significantly affect your path. The Two of Swords invites you to weigh

your options carefully, but also reminds you that staying stuck in indecision can lead to stagnation. It's time to trust your intuition and make a choice—one that aligns with your higher purpose. You may not have all the information, but you have enough to move forward. This card can also indicate a need for mental balance. You may be feeling conflicted or torn between two paths, and it's important to acknowledge both sides of the situation. While the answer may not be obvious, The Turning Point is about embracing your power to make a choice that moves you closer to your goals.

## SHADOW SIDE

Reversed, The Turning Point suggests that you're avoiding a decision or refusing to face a dilemma. There could be a fear of making the wrong choice, leading to analysis paralysis. This card warns that delaying the inevitable can cause more harm than good, as it keeps you stuck in limbo.

## KEYWORDS UPRIGHT

Decision, balance, crossroads, mental clarity, intuition, choices

## KEYWORDS REVERSED

Indecision, avoidance, confusion, staying stuck, fear of making the wrong choice

## TRUTH BOMB

What decision have I been avoiding—and what's it costing me to stay stuck?

# THE HEARTQUAKE

Traditional Title: Three of Swords



## QUIET REBEL INSIGHT

It hurt because it mattered. But your pain has edges for a reason—it's carving space for something true.

## CORE MESSAGE

The Heartquake is the card of emotional pain, heartbreak, and sorrow. It represents moments when your heart feels shattered, whether from personal loss, betrayal, or the weight of grief. This card may

feel intense, but it's important to remember that it signals not just suffering, but the potential for growth through these difficult emotions. Just as an earthquake shakes the ground, emotional pain shakes your heart, creating space for healing, clarity, and transformation. If you're experiencing heartache, this card invites you to sit with your feelings instead of avoiding them. There is a deep, often necessary, processing that occurs when we face the pain head-on. Trust that while the storm may feel overwhelming, there is healing on the other side. The Heartquake is not the end—it's the moment before the rebirth.

## SHADOW SIDE

Reversed, The Heartquake suggests unresolved emotional pain or repressed feelings. You may be avoiding the hurt or pretending that everything is fine, but the longer you ignore the issue, the deeper the wound may become. There could be a tendency to hold onto past pain, preventing you from moving forward.

## KEYWORDS UPRIGHT

Heartbreak, emotional pain, sorrow, grief, loss, transformation

## KEYWORDS REVERSED

Repression, unresolved emotions, denial, inability to move on

## TRUTH BOMB

What pain am I still carrying that I haven't fully acknowledged?

# THE NAP IS CALLING

Traditional Title: Four of Swords



## QUIET REBEL INSIGHT

Rest isn't retreat. It's repair. Pull back, breathe deep, and let silence stitch you back together.

## CORE MESSAGE

The Nap is Calling is the card of rest, recovery, and reflection. After a period of intense activity, struggle, or stress, this card signals a time to step back, recharge, and restore your energy. It's about taking a break,

both mentally and physically, to allow yourself the space to heal and regain clarity. Like a soldier returning to their camp after battle, it's time to regroup and reflect on what you've learned. This card reminds you that taking a break doesn't mean you're weak or giving up—it means you're taking care of yourself so that you can show up stronger and more focused when you return. Whether you need a full-blown rest or just a moment of pause, The Nap is Calling encourages you to listen to your body and mind.

## SHADOW SIDE

Reversed, The Nap is Calling suggests burnout, exhaustion, or an inability to rest. You may be pushing yourself too hard or avoiding the necessary downtime for fear of losing momentum. If you continue without proper rest, it can lead to physical or mental breakdowns. This card serves as a reminder that rest is integral to long-term success.

## KEYWORDS UPRIGHT

Rest, recovery, mental clarity, healing, reflection, pause

## KEYWORDS REVERSED

Burnout, exhaustion, neglecting self-care, overworking

## TRUTH BOMB

Where do I need to stop pushing and allow myself to recover?

# THE HOLLOW VICTORY

Traditional Title: Five of Swords



## QUIET REBEL INSIGHT

Winning without honour is just losing in disguise. Ask yourself: what's the real cost?

## CORE MESSAGE

The Hollow Victory represents the aftermath of conflict, where the price of success may outweigh the reward. This card highlights the emptiness that can come from winning at the expense of others or

sacrificing your integrity to claim victory. While it may seem like you've come out on top, you might be left with feelings of isolation, guilt, or the realisation that what you gained wasn't worth the cost. In this card, victory is hollow because it doesn't bring fulfilment. It's a reminder that true success is not just about winning; it's about how you win. Are you in alignment with your values? Have you burned bridges or alienated others in the process? The Hollow Victory asks you to reflect on your actions and reconsider what's truly important to you.

## SHADOW SIDE

Reversed, The Hollow Victory suggests unresolved conflict or an inability to move on from a past defeat. There may be lingering resentment, dishonesty, or an unwillingness to forgive. If you're holding onto the aftermath of a battle, it's preventing your personal growth. The card advises you to release the grudges and let go of the need to win at all costs.

## KEYWORDS UPRIGHT

Conflict, hollow victory, betrayal, empty success, isolation

## KEYWORDS REVERSED

Resentment, dishonesty, unresolved conflict, moving past defeat

## TRUTH BOMB

What am I trying to win—and is it even worth the fight anymore?

# THE EXIT STRATEGY

Traditional Title: Six of Swords



## QUIET REBEL INSIGHT

It's not always easy to leave, but sometimes the hardest exit is the one that leads to your greatest blessings.

## CORE MESSAGE

The Exit Strategy is the card of transition, moving on, and mental escape. It suggests that you may be in a situation that no longer serves you—whether it's a challenging relationship, a toxic environment, or

a difficult mindset—and the time has come to move on. This card indicates a journey, not necessarily a physical one, but one of mental or emotional release. It's about choosing the path that leads away from hardship and into calmer waters, leaving behind what no longer supports your well-being. The Six of Swords invites you to embrace change, even if it feels uncomfortable. While leaving something familiar behind can feel daunting, it's a necessary step towards healing and growth. Trust that this transition will bring you greater peace and clearer perspective in the long run.

## SHADOW SIDE

Reversed, The Exit Strategy suggests that you may be resisting the need to move on. You could be holding onto a situation or mindset that is no longer beneficial, fearing the unknown or avoiding the necessary change. Staying stuck in a harmful environment or mindset can keep you from progressing. This card urges you to stop delaying the inevitable and take that first step toward change.

## KEYWORDS UPRIGHT

Transition, moving on, mental release, escape, change, healing

## KEYWORDS REVERSED

Resistance to change, staying stuck, avoiding necessary transition, fear of the unknown

## TRUTH BOMB

What do I need to leave behind so I can finally move forward?

# THE SNEAKY BASTARD

Traditional Title: Seven of Swords



## QUIET REBEL INSIGHT

You don't owe anyone your full plan. But if you have to sneak, stall, or spin it—ask yourself who you're really hiding from.

## CORE MESSAGE

The Sneaky Bastard represents deception, secrecy, and the need for caution. This card suggests that something may be hidden from you, or you may be tempted to hide something from others. It can also

indicate the need to act strategically, often in situations where direct confrontation or honesty might not be the best approach. There could be an element of dishonesty, whether it's someone being sneaky around you or you playing your cards close to your chest. While this card can suggest underhanded tactics or dishonesty, it's not always negative. Sometimes, The Sneaky Bastard encourages you to protect your interests and be wary of the motives of others. It's about being cautious, keeping your cards hidden, and knowing when to play your hand and when to keep quiet. However, The Sneaky Bastard also serves as a reminder that deception, if left unchecked, can backfire. If you're tempted to take shortcuts, act with integrity and weigh the consequences.

## SHADOW SIDE

Reversed, The Sneaky Bastard suggests that deception has been exposed or that someone is attempting to manipulate or deceive you. It can indicate feelings of betrayal or dishonesty coming to light, leaving you to clean up the mess. This card warns against dishonesty and encourages transparency in your dealings, as secrets can cause more harm than good.

## KEYWORDS UPRIGHT

Deception, secrecy, strategy, dishonesty, hidden motives, playing it smart

## KEYWORDS REVERSED

Betrayal, exposure, dishonesty revealed, manipulation, truth coming to light

## TRUTH BOMB

Where am I being less than honest—with myself or someone else?

# THE MIND MAZE

Traditional Title: Eight of Swords



## QUIET REBEL INSIGHT

The trap isn't real—it's just familiar. Don't confuse comfort with freedom.

## CORE MESSAGE

The Mind Maze is the card of mental entrapment, self-imposed limitations, and feeling trapped in a cycle of confusion or fear. It suggests that you may be in a situation where you feel stuck, powerless,

or constrained, but often, the walls you face are created by your own thoughts, fears, or beliefs. This card speaks to the power of the mind to imprison you if you allow it. While The Mind Maze indicates a difficult mental state, it's also a reminder that you hold the key to your own liberation. The way out may seem unclear, but the truth is that the path to freedom lies in shifting your perspective. This card encourages you to challenge the thoughts or beliefs that are holding you back and seek a new way forward, even if it's uncomfortable. Sometimes, the first step to freeing yourself from the maze is simply acknowledging that you have the power to change your circumstances. Take a deep breath and trust that the solution is already within you.

## SHADOW SIDE

Reversed, The Mind Maze suggests that you are beginning to break free from the mental blocks that have kept you stuck. It may indicate that you are starting to see things clearly and realise that the limitations you thought were there are only illusions. This can be an empowering card, indicating that the path to freedom is within reach.

## KEYWORDS UPRIGHT

Mental imprisonment, self-limitation, fear, confusion, being stuck, needing perspective

## KEYWORDS REVERSED

Clarity, breaking free from mental blocks, gaining freedom, overcoming self-imposed limitations

## TRUTH BOMB

What story am I telling myself that's keeping me trapped?

# THE PANIC BUTTON

Traditional Title: Nine of Swords



## QUIET REBEL INSIGHT

You're not cursed—just catastrophising. Breathe. The sky isn't falling, just your thoughts.

## CORE MESSAGE

The Panic Button represents anxiety, sleepless nights, and overwhelming worry. It's the card of mental distress, often stemming from fear or imagined worst-case scenarios. This card suggests that

you may be plagued by negative thoughts or fears that are out of proportion to the actual situation. The panic button is being pressed, and everything feels more urgent or catastrophic than it truly is. While it's a card of intense mental pressure, The Panic Button is also a reminder that much of the fear you're experiencing may not be based in reality. The situation you're anxious about may not be as dire as you think. This card encourages you to take a step back, ground yourself, and challenge the thoughts that are creating a sense of crisis. Often, the best way to deal with overwhelming worry is to break things down into manageable pieces and remind yourself that you're stronger than your fears.

## SHADOW SIDE

Reversed, The Panic Button suggests that you may be starting to overcome your anxiety, or it could indicate the need to take action to address the sources of your worry. This card points to the possibility of moving through your fears and coming to terms with what has been keeping you up at night. If you've been stuck in a state of panic, this reversal shows you that you're finally finding a way out.

## KEYWORDS UPRIGHT

Anxiety, stress, mental turmoil, sleepless nights, fear, catastrophic thinking

## KEYWORDS REVERSED

Overcoming anxiety, calming down, facing fears, beginning to find peace

## TRUTH BOMB

What fear keeps circling in my mind—and what truth would quiet it?

# THE BITTER END

Traditional Title: Ten of Swords



## QUIET REBEL INSIGHT

Endings can feel awful, but they are often the most powerful invitations to start fresh. Don't resist the closing door; trust that something better is coming.

## CORE MESSAGE

The Bitter End represents a painful conclusion, hitting rock bottom, and a sense of finality. It's the card of the inevitable end—whether

it's a relationship, a job, a phase of life, or a mindset—that cannot be avoided any longer. This card often signifies feeling stabbed in the back, betrayed, or left in a situation that feels like a personal defeat. It's a moment when everything seems to fall apart, leaving you with little choice but to accept that something has come to a close. While this may feel like the ultimate betrayal or a hard pill to swallow, The Bitter End also contains the seed of transformation. This card serves as a reminder that endings, no matter how painful, make way for new beginnings. When the old is cleared away, you create the space needed for renewal and rebirth. While it's tempting to dwell on the hurt or injustice, this is the moment to look ahead and see the opportunities that await.

## SHADOW SIDE

Reversed, The Bitter End suggests that you're lingering too long in the aftermath of a painful situation, unable to let go of the past. It could also indicate a failure to accept that something is truly over, leading to prolonged suffering or an inability to move forward. This card in reverse urges you to release the past and embrace the possibility of a new chapter.

## KEYWORDS UPRIGHT

Endings, betrayal, rock bottom, finality, painful conclusions, new beginnings

## KEYWORDS REVERSED

Holding on to the past, refusing to let go, lingering in suffering, delayed healing

## TRUTH BOMB

What part of me is clinging to something that's already over?

# THE PEACE DISRUPTER

Traditional Title: Page of Swords



## QUIET REBEL INSIGHT

Curiosity can be a catalyst or a grenade. Ask the hard questions—but be ready for real answers.

## CORE MESSAGE

The Peace Disrupter is the card of fresh ideas, keen observation, and the desire to uncover the truth. As a Page, this card represents a messenger or an inquisitive young energy, eager to explore the world

with a sharp mind and a questioning spirit. You may find yourself questioning the status quo, seeking answers, or having a sudden insight that shakes things up. While this energy is often associated with intellectual curiosity, it can also bring disruption, forcing you to confront truths you've avoided. This card invites you to step into the role of the investigator—whether that's digging into a problem, challenging a belief, or seeking clarity in an unclear situation. It's a time to embrace your curiosity and ask the questions that others may be avoiding. The Peace Disrupter reminds you that progress is often made when you disrupt your comfort zone and look at things from a new perspective.

## SHADOW SIDE

Reversed, The Peace Disrupter can indicate gossip, misinformation, or a tendency to stir up trouble without fully understanding the consequences. It might warn against jumping to conclusions or rushing into debates without considering the facts. In this state, the curiosity of the Page can become more disruptive than enlightening, causing confusion or misunderstanding rather than positive change.

## KEYWORDS UPRIGHT

Curiosity, intellectual exploration, seeking truth, questioning the norm, discovery

## KEYWORDS REVERSED

Gossip, misinformation, hastiness, stirring trouble, jumping to conclusions

## TRUTH BOMB

What uncomfortable truth am I brave enough to explore now?

# THE STORM CHASER

Traditional Title: Knight of Swords



## QUIET REBEL INSIGHT

Speed without strategy is just chaos in a costume. If you're going to charge, know what you're charging into—and why.

## CORE MESSAGE

The Storm Chaser represents swift action, mental clarity, and the pursuit of truth at full speed. This card signals a time when it's crucial to act decisively and with confidence. Much like the knight riding into

a storm, you may find yourself charged with energy, ready to tackle challenges head-on and take risks in pursuit of your goals. It's the card of fast-moving thought, quick decisions, and the drive to make things happen. However, while The Storm Chaser encourages action, it also carries a reminder to be cautious. When you're charging forward with such force, there's a risk of being swept away by the speed of your own momentum. Be sure that your actions are driven by clarity and purpose, not impulsiveness or impatience. The storm may look exhilarating, but it's essential to keep your head clear and your focus sharp, even as you race towards your destination.

## SHADOW SIDE

Reversed, The Storm Chaser may indicate reckless behaviour, rushing into situations without thinking through the consequences, or getting caught up in a mental whirlwind. The card may warn of hastiness or overconfidence, suggesting you're moving too quickly without considering the full picture. Take a step back, reassess, and slow down to avoid unnecessary turbulence.

## KEYWORDS UPRIGHT

Swift action, mental clarity, decisive decisions, charging forward, boldness

## KEYWORDS REVERSED

Recklessness, impulsiveness, rushing, hastiness, losing control

## TRUTH BOMB

What am I charging towards—and do I know why?

# THE SHARPSHOOTER

Traditional Title: Queen of Swords



## QUIET REBEL INSIGHT

Clarity doesn't mean cruelty. You can wield the truth like a scalpel or a sword—choose the one that heals.

## CORE MESSAGE

The Sharpshooter is the card of clear-headed decision-making, keen discernment, and intellectual strength. This Queen stands tall in her truth, armed with sharp wit and an unflinching gaze. She is no stranger

to life's challenges, yet she faces them with a calm and calculated approach. When this card appears, it's a reminder to approach situations with clarity and precision, cutting through the noise to find the heart of the matter. This is not a time for indulgence in emotions or distractions—The Sharpshooter embodies a clear, logical approach to problem-solving. This card invites you to trust your intellect, embrace your inner strength, and speak your truth. The Queen of Swords knows that sometimes, the best way forward is to set boundaries, distance yourself from emotional chaos, and focus on what needs to be done. She's a protector of her mental space and encourages you to do the same—take time to filter out unnecessary noise and concentrate on what truly matters.

## SHADOW SIDE

Reversed, The Sharpshooter can signify coldness, emotional detachment, or harsh judgment. In this state, the clarity of thought may turn into a sharpness that cuts others too deeply. It may be a sign that you're relying too much on logic and not enough on empathy, or that you've become too critical of both yourself and others. This card in reverse warns against being overly critical or distant, and encourages you to balance your intellectual power with emotional sensitivity.

## KEYWORDS UPRIGHT

Clarity, precision, truth, discernment, mental strength, logical approach

## KEYWORDS REVERSED

Coldness, emotional detachment, harsh judgment, overly critical, lack of empathy

## TRUTH BOMB

Where do I need to cut through the noise and speak what's really true?

# THE MASTERMIND

Traditional Title: King of Swords



## QUIET REBEL INSIGHT

Thinking ten steps ahead is useful—unless you forget to show up for the one you're on. Lead with vision, not detachment.

## CORE MESSAGE

The Mastermind is the embodiment of intellectual mastery, clear communication, and strategic thinking. As the King of Swords, this card represents someone who has honed their mental prowess to

a sharp edge. It's a time to tap into your own intellectual authority and embrace your capacity to make logical, well-informed decisions. The Mastermind doesn't rush—he approaches life with patience, understanding that true wisdom comes from careful planning and the ability to see the big picture. This card may also indicate a need for you to take on the role of the strategist, using your mental faculties to navigate challenges and achieve your goals. It encourages you to lead with clarity and purpose, communicate effectively, and make decisions grounded in facts and truth. The Mastermind signifies mental authority, leadership, and a commitment to fairness. His strength lies not in brute force, but in the power of the mind.

## SHADOW SIDE

When reversed, The Mastermind can point to mental manipulation, dishonesty, or a misuse of intellectual power. In this state, the King may become too rigid or controlling, believing that his way is the only way. It may also indicate a tendency to overthink or become overly analytical, leading to indecision or paralysis by analysis. This card in reverse warns against abusing your intellectual strength or using your authority to dominate others.

## KEYWORDS UPRIGHT

Strategy, mental mastery, authority, clear communication, leadership, logical thinking

## KEYWORDS REVERSED

Manipulation, dishonesty, intellectual control, overthinking, rigidity

## TRUTH BOMB

How can I use my clarity and strategy to lead with integrity?

# THE BIG BANG

Traditional Title: Ace of Wands



## QUIET REBEL INSIGHT

Every fire needs a spark. This is yours. Don't wait for someone to hand you a match—strike your own.

## CORE MESSAGE

The Big Bang is the spark of creativity and possibility—an electrifying burst of energy that signals the start of something new and exciting. When you draw this card, it's a powerful signal that fresh opportunities

are on the horizon, and you're about to embark on a thrilling adventure. This is the card of inspiration, enthusiasm, and raw potential. The Ace of Wands is the ignition of your inner fire, ready to propel you toward your passions and desires. Whether it's a creative project, a new relationship, or a change in direction, The Big Bang urges you to trust in the power of your ideas. It's time to take bold, courageous action and follow the natural flow of energy that is rushing through you. The potential for growth and success is limitless, and the only thing holding you back is hesitation. Embrace this powerful moment of initiation, and take the first step toward something extraordinary. The world is waiting for you to show up with your full energy and vision.

## SHADOW SIDE

When reversed, The Big Bang suggests that your creative energy may be blocked or delayed. Perhaps you're struggling to find direction, or you're feeling uncertain about the next steps to take. The spark is still there, but it's been dimmed by fear, doubt, or lack of focus. Reversed, this card encourages you to take a step back, clear your mind, and re-engage with your passions. You may need to remove obstacles or refocus your intentions before this energy can fully manifest.

## KEYWORDS UPRIGHT

New beginnings, inspiration, creativity, potential, spark of life

## KEYWORDS REVERSED

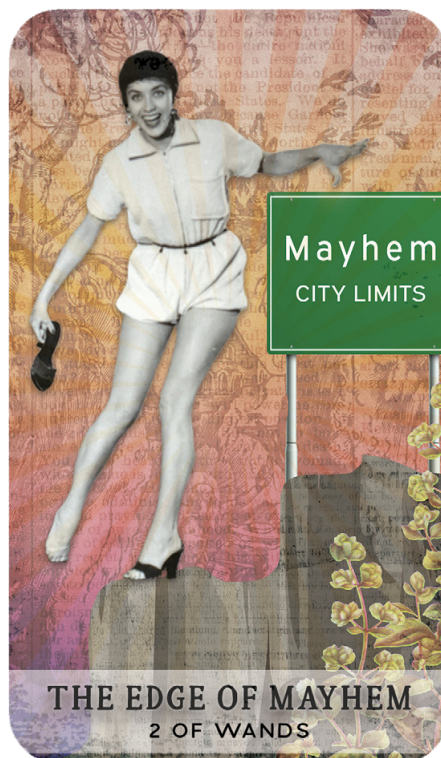
Delays, creative block, lack of motivation, missed opportunities

## TRUTH BOMB

What passion or idea have I been sitting on that's ready to erupt?

# THE EDGE OF MAYHEM

Traditional Title: Two of Wands



## QUIET REBEL INSIGHT

It's tempting to stay where it's safe. But the wild unknown is calling—and you didn't come here to play small.

## CORE MESSAGE

The Edge of Mayhem signifies a pivotal moment in your journey—a time when you're contemplating new possibilities and weighing your options. This card is all about taking the first steps toward a bigger

vision, daring to step out of your comfort zone and explore new horizons. You've already seen the potential and felt the excitement, and now you're at the crossroads, ready to take that leap. This card often appears when you're in the midst of making important decisions about your future, whether they're related to your career, relationships, or personal goals. The energy of the Two of Wands is all about bold moves, strategic planning, and an invitation to expand your vision. You may be feeling a strong desire for adventure and change, and this card reminds you that growth lies just beyond your current borders. There's a whole world out there, and it's calling your name. It's time to think big, act with confidence, and take the necessary risks to move forward.

## SHADOW SIDE

When reversed, The Edge of Mayhem points to indecision or fear of taking action. You may be standing at the threshold of something great but feeling too overwhelmed to step through. There may be doubts about your abilities, or perhaps you're struggling to envision what lies ahead. This card reversed urges you to move beyond the hesitation and commit to your path. Even a small action can create momentum.

## KEYWORDS UPRIGHT

Expansion, new opportunities, planning, bold decisions, exploration

## KEYWORDS REVERSED

Indecision, hesitation, missed opportunities, lack of direction

## TRUTH BOMB

What bold move have I been avoiding in the name of safety?

# THE GREAT ESCAPE

Traditional Title: Three of Wands



## QUIET REBEL INSIGHT

The moment you stop clinging to the shore, you remember you're built for oceans. Trust the tide—you're further than you think.

## CORE MESSAGE

The Great Escape is the card of progress and expansion. When this card appears, it signifies that your plans are beginning to take shape, and the hard work you've put in is starting to pay off. You've put in the

effort, you've made the decisions, and now you can see the fruits of your labour starting to bloom. This is the moment when things begin to unfold, and you can feel the excitement of possibility rising. The Three of Wands is a powerful reminder that your vision has the potential to go further than you initially imagined. There's a strong sense of optimism and confidence that comes with this card, as it's about watching your dreams and ideas expand into reality. Your perspective has widened, and you're beginning to see the bigger picture. Whether it's a new business venture, creative pursuit, or personal goal, the universe is now aligning to help you succeed. Now's the time to make sure your foundation is solid, for the waves of change are gathering strength.

## SHADOW SIDE

When reversed, The Great Escape can indicate a sense of waiting without action. You may be feeling uncertain about the next step or caught in the frustration of delays. The initial excitement has waned, and you may begin to feel as though your efforts are stuck. The Three of Wands reversed urges you to take another look at your plans and check in with your intentions. If things aren't moving forward, it may be time to re-evaluate your approach or push past any limiting beliefs.

## KEYWORDS UPRIGHT

Expansion, progress, success, waiting for results, growth

## KEYWORDS REVERSED

Delays, frustration, missed opportunities, lack of clarity

## TRUTH BOMB

Where am I ready to expand, and what belief still tries to keep me small?

# THE AFTER PARTY

Traditional Title: Four of Wands



## QUIET REBEL INSIGHT

Don't rush to the next thing. Celebrate the now. Let your joy anchor the next chapter, not be swallowed by it.

## CORE MESSAGE

The After Party signals a time of celebration, completion, and achievement. This card represents a moment of joy and recognition for all the hard work you've put in. Whether it's the successful completion

of a project, the culmination of a long-term goal, or simply a moment of peace and stability, the Four of Wands invites you to take a moment to celebrate. The hard work has paid off, and now you're reaping the rewards. This card is all about community, connection, and the joy of shared success. There's a feeling of harmony and togetherness, and it's a reminder that we don't have to journey alone. If you're in the midst of a project, partnership, or relationship, The After Party shows that you're on the right path, with a strong foundation beneath you. It's a sign of prosperity, stability, and the potential for long-term happiness. The celebration doesn't need to be grand—it's the quiet moments of satisfaction, the small victories, and the appreciation of your progress that matter most.

## SHADOW SIDE

When reversed, The After Party can indicate a lack of recognition or a sense of unfinished business. Perhaps you've achieved something, but you're not feeling the sense of closure or satisfaction you expected. Alternatively, you may be avoiding the celebrations, too focused on what's next or on what still needs to be done. This card reversed invites you to slow down and acknowledge the victories, even the small ones. Take time to reflect, and don't rush ahead without giving yourself credit for how far you've come.

## KEYWORDS UPRIGHT

Celebration, achievement, harmony, success, stability

## KEYWORDS REVERSED

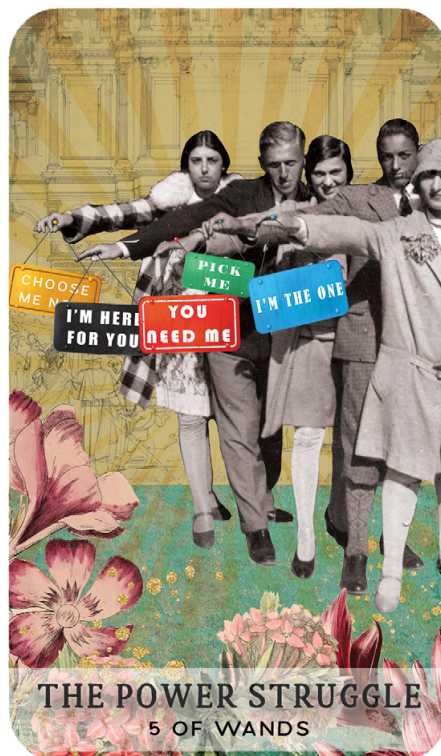
Unfinished business, lack of closure, missed celebration, dissatisfaction

## TRUTH BOMB

Have I allowed myself to truly celebrate how far I've come?

# THE POWER STRUGGLE

Traditional Title: Five of Wands



## QUIET REBEL INSIGHT

Friction reveals what's worth fighting for. Don't fear the conflict—it's sharpening your edge.

## CORE MESSAGE

The Power Struggle represents conflict, competition, and the energy of confrontation. While it may not always feel comfortable, this card indicates that you're in the midst of a situation where various forces

are at play. There may be differing opinions, opposing ideas, or a sense of competition that's challenging your current state of affairs. However, this isn't always a bad thing—conflict can be the fire that sparks growth and clarity. This card is an invitation to step into the fray and confront challenges directly. It's a call to stand your ground, be assertive, and fight for what you believe in. The Five of Wands can represent internal conflict as well as external disputes, and either way, it's about using your energy to clarify your values and intentions. Often, the Five of Wands shows that there are lessons to be learned through disagreement—don't shy away from the tension, but use it as a means to find resolution and greater understanding.

## SHADOW SIDE

When reversed, The Power Struggle suggests either avoiding confrontation or being caught in petty squabbles that are draining your energy. If you're not willing to face conflict, you may feel stuck or trapped in a cycle of tension that never seems to resolve. Alternatively, you might be feeling overwhelmed by the chaos around you, unable to find a clear path forward. This card urges you to step up, engage with what needs to be addressed, and find a constructive way through the tension.

## KEYWORDS UPRIGHT

Conflict, competition, challenges, assertion, growth

## KEYWORDS REVERSED

Avoidance, petty squabbles, overwhelming tension, stunted progress

## TRUTH BOMB

What conflict am I resisting that could actually sharpen my clarity?

# THE RISING STAR

Traditional Title: Six of Wands



## QUIET REBEL INSIGHT

Take the win. You earned it. But remember: success is just a spotlight. Keep moving or it'll blind you. Your rise is just the beginning.

## CORE MESSAGE

The Rising Star is the card of recognition, success, and public acclaim. When this card appears, it's a sign that you are about to receive the acknowledgement you deserve. Whether it's from colleagues, friends,

or the wider world, your efforts are being noticed, and you're on the cusp of a well-earned victory. This isn't just about external praise—it's also about recognising your own growth and how far you've come. The Six of Wands is a powerful reminder that success is not only about the destination, but also about the journey. You've faced challenges, you've worked hard, and now it's time to savour the rewards. This card signifies a moment of triumph and recognition, a time when your confidence is soaring, and you're in a position to inspire others. But don't forget that this moment is just the beginning. Your success is opening doors to even greater opportunities.

## SHADOW SIDE

When reversed, The Rising Star suggests a lack of recognition or a feeling of being overlooked. You may feel like your achievements are going unnoticed, or perhaps you're struggling to believe in your own success. It's easy to fall into self-doubt, but the Six of Wands reversed urges you to remember that victory often comes in quiet forms, and recognition can sometimes be internal rather than external. It may also indicate a fear of standing out, as though you're unsure about fully owning your success.

## KEYWORDS UPRIGHT

Success, recognition, achievement, confidence, victory

## KEYWORDS REVERSED

Lack of recognition, self-doubt, fear of visibility, missed opportunities

## TRUTH BOMB

What success am I afraid to own—and why do I still think I have to dim my light to be accepted?

# THE UPHILL BATTLE

Traditional Title: Seven of Wands



## QUIET REBEL INSIGHT

When the world pushes back, push forward. Resistance is proof you're standing for something.

## CORE MESSAGE

The Uphill Battle is the card of perseverance, courage, and determination in the face of adversity. It signals a moment where you may feel the weight of challenges pressing down on you, but it also

shows that you have the strength to rise to the occasion. When this card appears, it's a sign that you're standing your ground, defending your position, and doing what it takes to protect what matters most. The Seven of Wands reminds you that not all battles are fought in the physical world—sometimes, the greatest battles happen within, as you fight to stay true to your values, dreams, and integrity. It may feel like you're facing opposition or that the odds are stacked against you, but this card encourages you to keep fighting. Victory is not about being without conflict but about having the courage to face challenges head-on and emerge stronger.

## SHADOW SIDE

When reversed, The Uphill Battle indicates a feeling of being overwhelmed or defeated. Perhaps you're feeling exhausted by the constant struggle, or you're second-guessing your ability to win. The reversed Seven of Wands may suggest that you're giving up too easily or avoiding confrontation altogether. While it's important to know when to walk away from unnecessary conflicts, the card reversed reminds you not to abandon the fight just when success is within reach. Stay grounded, even when the odds are high.

## KEYWORDS UPRIGHT

Persistence, courage, defending your position, resilience, standing up for yourself

## KEYWORDS REVERSED

Overwhelm, giving up too soon, avoidance, lack of resolve

## TRUTH BOMB

Where in my life do I need to hold the line, even when it would be easier to give in?

# THE FAST TRACK

Traditional Title: Eight of Wands



## QUIET REBEL INSIGHT

Momentum is magic—but direction is everything. Don't let speed choose the destination for you.

## CORE MESSAGE

The Fast Track is the card of swift movement, rapid progress, and quick decisions. When this card appears, it's a sign that things are picking up speed—what once seemed slow or uncertain is now moving forward

at an accelerated pace. The Eight of Wands brings a burst of energy and momentum, often signalling that the time for action is now. You're being called to respond quickly, whether it's in business, relationships, or personal matters. Opportunities are on the horizon, but they won't wait for long. This card encourages you to embrace the speed at which things are unfolding. It's a reminder that while rapid change can be exhilarating, it can also be overwhelming. Stay focused and avoid getting distracted by the whirlwind around you. Keep your eyes on the prize and ride the wave of momentum. The Fast Track is often a reminder that the right time to act is when things align in unexpected ways—don't hesitate to grab the opportunities that come your way.

## SHADOW SIDE

When reversed, The Fast Track can indicate a delay or disruption in momentum. It may feel like things have slowed down or you're hitting obstacles in your path. Alternatively, the reversed Eight of Wands suggests that you may be rushing into something without proper thought or preparation, leading to mistakes or missteps. It's important to find a balance between action and reflection—don't let the speed of change lead you to make impulsive decisions you'll regret later.

## KEYWORDS UPRIGHT

Rapid progress, swift action, momentum, opportunities, fast-paced change

## KEYWORDS REVERSED

Delays, disruptions, rushing, impulsiveness, missteps

## TRUTH BOMB

What opportunity needs me to say yes before it's gone?

# THE LAST ONE STANDING

Traditional Title: Nine of Wands



## QUIET REBEL INSIGHT

You're tired, not defeated. Rest if you must—but don't you dare count yourself out.

## CORE MESSAGE

The Last One Standing is the card of perseverance, resilience, and holding firm when the finish line is within sight. When this card appears, it's often a sign that you're in the final stretch of a difficult journey, and

though you may be weary, you've made it this far for a reason. The Nine of Wands speaks to the strength it takes to keep going, even when you feel exhausted or on the brink of giving up. You've faced challenges before, and each obstacle has only made you stronger. This card serves as a reminder that success isn't just about the victories you've had—it's also about the courage you've shown through the toughest times. While it's natural to feel fatigued, don't let this weariness stop you from finishing what you started. You've come too far to turn back now. Stand tall and finish strong; your determination will pay off.

## SHADOW SIDE

When reversed, The Last One Standing can indicate burnout or a feeling of being overwhelmed. You may be so worn out that you can't see the finish line anymore. Alternatively, it could suggest that you're unwilling to push through the final hurdles, perhaps due to self-doubt or a lack of belief in your ability to succeed. If this is the case, the card reminds you to dig deep and remember the strength you have within. You're closer than you think to achieving your goals.

## KEYWORDS UPRIGHT

Resilience, perseverance, strength through adversity, persistence, determination

## KEYWORDS REVERSED

Burnout, exhaustion, self-doubt, giving up too soon, lack of belief

## TRUTH BOMB

What keeps me going when everything else says to quit—and how can I honour that strength?

# THE OVERLOAD

Traditional Title: Ten of Wands



## QUIET REBEL INSIGHT

You're not here to carry it all. Lay something down. The world won't end—but your burnout might.

## CORE MESSAGE

The Overload is the card of burden, responsibility, and feeling weighed down by the weight of your commitments. When this card appears, it's often a sign that you've taken on too much, and the pressure is

starting to show. You may feel like you're carrying the world on your shoulders, juggling multiple tasks or responsibilities with little to no time for yourself. While the Ten of Wands speaks to the hard work and determination you've put in, it also highlights the importance of balance and self-care. This card asks you to assess whether you're overburdened and if there's something you can release or delegate. It's easy to get caught up in the need to do everything, but doing so at the expense of your well-being will only lead to burnout. The Overload is an invitation to acknowledge the limits of your energy and to take the necessary steps to lighten the load. Remember: it's okay to ask for help or to put some things down in order to prioritise what truly matters.

## SHADOW SIDE

When reversed, The Overload may signal that you're either struggling to ask for help or are unable to let go of responsibilities that no longer serve you. You might be carrying guilt, perfectionism, or the fear of letting others down, which is contributing to your exhaustion. It's a sign that it's time to reassess your priorities and determine what can be released. Holding on too tightly to everything is only hindering your ability to move forward.

## KEYWORDS UPRIGHT

Burden, overcommitment, responsibility, hard work, exhaustion

## KEYWORDS REVERSED

Burnout, guilt, refusing help, overwhelmed, prioritising wrongly

## TRUTH BOMB

What burden am I carrying out of guilt or habit—and what would happen if I set it down?

# THE FLAME THROWER

Traditional Title: Page of Wands



## QUIET REBEL INSIGHT

Creativity doesn't wait for permission. When the spark hits, don't overthink—create something raw, messy, and entirely yours. That's the beginning of magic.

## CORE MESSAGE

The Flame Thrower is all about excitement, creativity, and the energy of new beginnings. As a Page, this card represents a burst of inspiration or

the early stages of a passionate pursuit. It's a time when your curiosity and enthusiasm are at an all-time high, pushing you to explore new avenues, try something different, or take a leap of faith into uncharted territory. The Page brings with it an invitation to follow your passion, act on your creative impulses, and embrace the energy of possibility. This card is full of youthful exuberance, suggesting that you may feel a renewed sense of purpose or an irresistible urge to explore new ideas. It's a card of spontaneous action and a reminder to trust your instincts. Don't wait for the "perfect" time; just light that spark and see where it takes you. The Flame Thrower encourages you to act with courage and enthusiasm—oftentimes the fire you need to fuel your dreams comes from within.

## SHADOW SIDE

Reversed, The Flame Thrower can signal a lack of direction or enthusiasm. It may point to feeling uninspired, lacking motivation, or struggling to find that initial spark of creativity. In this state, you may be prone to impulsiveness or jumping into projects without clear vision or preparation. It's a reminder to channel your energy thoughtfully and find your focus before diving in.

## KEYWORDS UPRIGHT

Inspiration, creativity, passion, new beginnings, enthusiasm, spontaneity

## KEYWORDS REVERSED

Lack of inspiration, aimlessness, hesitation, overhasty action

## TRUTH BOMB

Where is my creativity asking to break free—and what am I afraid it might disrupt?

# THE BLAZE RUNNER

Traditional Title: Knight of Wands



## QUIET REBEL INSIGHT

When your fire's lit, run with it—but don't forget to check the direction. Passion is powerful, but without purpose, it just burns things down.

## CORE MESSAGE

The Blaze Runner is a card of bold action, courage, and unstoppable momentum. As the Knight of Wands, this card embodies the spirit of adventure, daring pursuits, and taking calculated risks in the name of

growth. When you pull this card, it's a clear sign that it's time to take action with enthusiasm and confidence. This card ignites your inner fire and drives you to follow your passions without hesitation, as you charge full speed ahead into new challenges and opportunities. The Blaze Runner doesn't have time for second-guessing—he trusts his instincts and relies on his energy to carry him through. His journey is one of spontaneity, passion, and the pursuit of what excites him. When this card appears, you are called to embrace your fiery nature and push forward with boldness and determination. It's the moment to act, to seize the day, and to dive into life with a sense of purpose and drive.

## SHADOW SIDE

Reversed, The Blaze Runner can represent reckless energy or a lack of direction. While the Knight's enthusiasm is admirable, when he's out of balance, he can be impulsive, impatient, or too hasty in his decisions. This card warns against rushing into things without a solid plan or being driven solely by desire and excitement. If you're feeling scattered or frustrated, it's a sign to slow down and assess your next steps carefully.

## KEYWORDS UPRIGHT

Bold action, adventure, courage, spontaneity, passion, momentum

## KEYWORDS REVERSED

Recklessness, impulsivity, lack of direction, overconfidence, impatience

## TRUTH BOMB

Am I chasing purpose—or just chasing the high of motion?

# THE HOTSHOT

Traditional Title: Queen of Wands



## QUIET REBEL INSIGHT

You don't need to prove your brilliance. Walk in, light up the room, and let your presence speak for itself.

## CORE MESSAGE

The Hotshot is the epitome of charisma, creativity, and vibrant energy. As the Queen of Wands, she is a force to be reckoned with, radiating confidence, warmth, and magnetism. This card represents someone

who leads by example, effortlessly drawing people in with their passion, charm, and undeniable presence. The Hotshot is unapologetically bold and knows how to command attention without saying a word. Her creativity flows freely, and she inspires others to take action and pursue their own dreams with the same intensity and authenticity. When this card appears, it's a call to embrace your own inner power, to step into your personal spotlight and shine brightly. It's a reminder that your confidence is magnetic, and your unique qualities have the power to inspire and lead. You may be entering a period where your creative potential is ready to explode, or where your natural ability to influence and inspire others can take you to new heights. Trust in your instincts, and allow your passion to fuel the next chapter of your journey.

## SHADOW SIDE

Reversed, The Hotshot can indicate a loss of confidence, burnout, or a struggle to find your creative spark. In this state, you might feel disconnected from your passions or be overly concerned with how others perceive you. It may also signify arrogance or an overbearing attitude that stifles others' creativity or expression. The reversed Queen encourages you to reconnect with your inner fire, focus on nurturing your spirit, and find balance between your energy and the needs of those around you.

## KEYWORDS UPRIGHT

Confidence, creativity, leadership, charisma, inspiration, passion

## KEYWORDS REVERSED

Burnout, self-doubt, arrogance, creative block, overbearing energy

## TRUTH BOMB

What part of me am I finally ready to let be unapologetically seen?

# THE PIONEER

Traditional Title: King of Wands



## QUIET REBEL INSIGHT

Vision without action is just fantasy. You've got the spark—now lead like you mean it. Others will follow your flame.

## CORE MESSAGE

The Pioneer is the embodiment of visionary leadership, bold action, and fearless innovation. As the King of Wands, this card signifies someone who not only dreams big but also has the courage, drive, and

determination to bring those dreams to life. The Pioneer is a natural leader, capable of inspiring others to follow their vision and take action toward a common goal. He isn't afraid to blaze new trails, whether in business, creativity, or personal growth. This card encourages you to step into a position of leadership, take charge of your journey, and make the bold moves necessary to manifest your goals. The Pioneer's energy is magnetic and full of potential. He knows how to lead with passion, inspire action, and stay focused on the bigger picture. When you pull this card, it's a sign that you have the power to not only lead but to innovate and inspire others. This is the time to take calculated risks, trust in your vision, and move confidently toward your future.

## SHADOW SIDE

Reversed, The Pioneer can indicate a loss of direction, a lack of follow-through, or difficulty asserting yourself. In this state, the King's leadership qualities may become more domineering or controlling, leading to conflicts with others. It may also signify someone who is scattered, lacking the focus and commitment needed to turn their vision into reality. The reversed card calls for a return to clarity, re-establishing your focus, and ensuring you're leading with both confidence and humility.

## KEYWORDS UPRIGHT

Leadership, vision, innovation, boldness, inspiration, authority

## KEYWORDS REVERSED

Lack of direction, scattered energy, overbearing leadership, inability to commit

## TRUTH BOMB

What bold vision am I being asked to lead—and do I trust myself to carry it?