

THE MISFIT DIVAS

ORACULAR
SPECTACULAR



BY LYN THURMAN

THE MISFIT DIVAS ORACULAR SPECTACULAR

Vanished mid-act but now they're back—with corsets, prophecy, and flair for the dramatic. A forgotten travelling troupe of dazzling misfits — saints in sequins, prophets in petticoats, rebels in rouge — resurfaces through a deck of fifty oracle cards. These are the old friends you never knew you missed – resurrected to invite you into the theatre of your own peculiar magic.

Each Diva steps forward to reveal truths from the shadows, offering guidance wrapped in velvet and smoke. This is no polite parlour deck – it's a glorious cabaret of archetypes and enigmas, designed to provoke, inspire, and delight those ready to consult the most eccentric chorus of oracles ever assembled.

THE LOST TROUPE

They were never meant to be remembered. Not properly, at least.

The Misfit Divas were whispered about, not documented—an elusive ensemble of too-much women, ghosting across velvet stages and mirror-dim parlours from Paris to Prague to the backstreets of Nowhere-in-Particular. They weren't born of royal blood or respectable ambition, but from alchemy and aftermath: daughters of scandal, muses discarded, saints who failed their sainthood. They performed not for applause but for the ache it stirred in the onlookers who couldn't look away.

And then—poof. Gone. Vanished mid-act, as if swallowed by the footlights themselves.

But misfits never vanish for good. They wait in the folds of forgotten dreams, in the silent corners of your mind where rebellion and recognition twine like old lovers. They've returned now, not for redemption—but for relevance.

You' have found their deck.

Each shuffle revives a Diva. Each draw is an invitation. Are you ready to rejoin the troupe?

THE MISFIT DIVAS ORACULAR SPREADS

Every diva has her drama, her costume changes, and her moments of brilliance. These spreads invite you to step into the spotlight, unmask your truth, and let the troupe guide your next act. Use them for daily musings, deep introspection, or to create your own divinatory cabaret — where wisdom struts in heels and nothing stays hidden under the stage lights.

THE SPOTLIGHT SPREAD

A spread for self-expression and reclaiming centre stage. Who are you when the lights hit and there's no script to follow? This spread helps you rediscover your confidence and authenticity. It's perfect when you feel overlooked or unsure of your next move.



1. **The Spotlight** – What's ready to be seen or revealed.
2. **The Costume** – How you're presenting yourself to the world.
3. **The Script** – The story you're telling (true or false).
4. **The Stage Crew** – The unseen support or influences.
5. **The Encore** – How to own your moment and shine unapologetically.

THE THREE ACT DRAMA

A narrative spread for any transformation or unfolding story. Every diva's life is a story told in three acts: the rise, the reckoning, and the revelation. This spread helps you understand the flow of your personal narrative.



1. **Act I – The Setup** – What began this chapter or conflict.
2. **Act II – The Confrontation** – The tension or lesson currently unfolding.
3. **Act III – The Resolution** – The wisdom or direction to bring closure.

DRESSING ROOM CONFESSIONAL

A spread for truth-telling, identity, and inner revelation. Behind the sequins and rouge, every diva hides a secret. This spread invites you to peel back the layers and meet yourself beneath the glamour.



1. **The Mirror** – What you see (and what you want others to see).
2. **The Powder Puff** – What you're concealing or softening.
3. **The Corset** – What restricts or confines you.
4. **The Wig Stand** – What identity you're ready to release.
5. **The Heartbeat** – Your most authentic, unfiltered desire.

THE TROUPE'S ADVICE

A group reading where your cast of divas chimes in. Sometimes you don't need a single leading lady — you need the whole chorus. This spread lets the troupe speak as a collective, offering contrasting wisdom and wild perspectives.



1. **The Leading Lady** – The main influence in your situation.
2. **The Prima Rival** – The challenge, shadow, or resistance at play.
3. **The Comic Relief** – The humour, grace, or overlooked blessing.
4. **The Stage Manager** – The practical action or next step.
5. **The Muse** – The inspiration or potential outcome if you follow the troupe's lead.

GHOSTS OF THE VELVET CURTAIN

A spread for ancestral, spiritual, or shadow guidance. When the velvet curtain sways, the echoes of forgotten performances drift through. This spread is for connecting with unseen influences — spirits, ancestors, or echoes of your past selves.



1. **The Ghost Who Calls** – The presence or energy reaching out.
2. **The Lesson They Bring** – What they want you to understand.
3. **The Scene Replayed** – A repeating pattern or unfinished story.
4. **The Applause from Beyond** – The blessing or release they offer.
5. **The Final Bow** – How to honour the message and move forward.

THE MISFIT MANIFESTO SPREAD

A spread for rebellion, creation, and unapologetic purpose. This is your declaration of divine disobedience. Use it when you're ready to reject expectations, craft your own narrative, and create something that refuses to fit the mould.



1. **The Rule You Break** – What limitation or belief to defy.
2. **The Cause You Serve** – What truly drives your soul.
3. **The Stage You Claim** – Where your voice or gifts belong.
4. **The Script You Write** – The new story or creation emerging.
5. **The Legacy You Leave** – The mark your rebellion makes on the world.

**MEET THE
MISFIT
DIVAS**



THE RINGMISTRESS OF CHAOS

CATALYST * UNCERTAINTY * COMMAND



She strides into the spotlight, cracking a whip and grabbing attention. The tent holds its breath; the universe itself seems to hush. Her entrance is a promise: that every law of physics, every neat little sequence you rely on, is about to be suspended. The Mistress of Chaos has come to show you that order was always a convenient illusion.

DIVINATORY MEANING

The Ringmistress appears when the ordinary order of things is no longer serving you. She doesn't manufacture disorder for spectacle: she exposes the fault lines already running beneath your plans. Her arrival signals a moment when the script is unsalvageable, and the only way forward is to improvise. Chaos, in her arena, is a catalyst: it strips away the false certainty that keeps you small.

You are being asked to claim command in the midst of flux, not by tightening your grip but by owning your presence. Step into the centre ring. Own it! Direct the storm with clarity of intention, even if you cannot predict the next act. Leadership here is not about control but the confidence to move while the lights sizzle and flicker.

- **Catalyst:** Rapid change, a spark that sets larger forces into motion.
- **Uncertainty:** The ground is shifting; insight comes only after movement begins.
- **Command:** Authority born of courage and flexibility, not rigid rules.

SHADOW SIDE

The temptation to dominate or to thrive on turmoil for its own sake. Beware confusing noise with power.

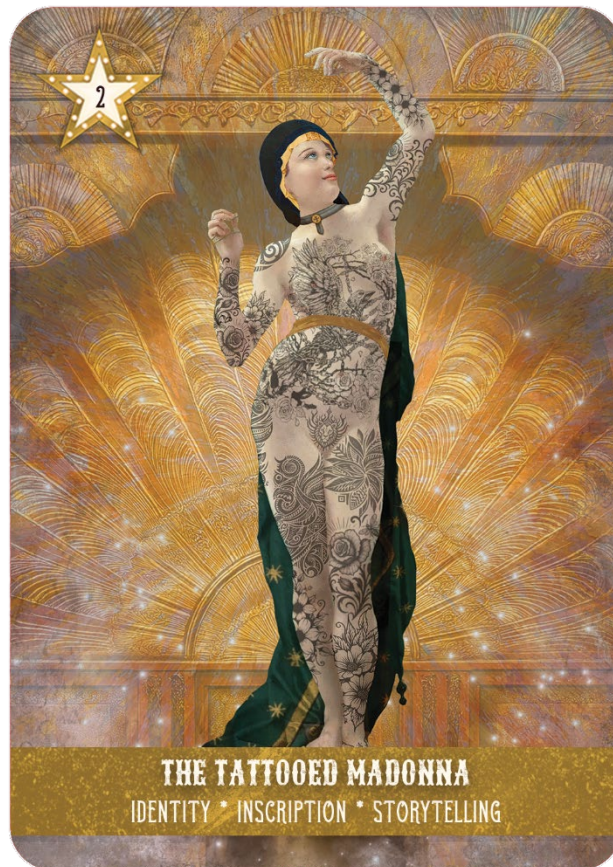
PROMPT

Where is upheaval asking for your authority, not your panic? What new pattern wants to emerge once you stop clutching the old one?



THE TATTOOED MADONNA

IDENTITY * INSCRIPTION * STORYTELLING



She stands beneath a warm, golden stage glow, skin inked with constellations and forgotten prayers. Every mark is a chapter: saints who never made the calendar, lovers whose names were spells. The Tattooed Madonna meets your gaze with a quiet certainty—as if your own story is already etched on her palms.

DIVINATORY MEANING

The Tattooed Madonna steps forward when you are being called to claim the authorship of your own myth. Her skin, luminous under the golden lights, is a living archive of choices, losses, revelations and rebellions. Every line of ink declares: *this is who I have been, this is who I am becoming.*

She reminds you that identity is not a single mask or a fixed label. It is a layered story—one you can revise, embellish, or strip back to its bones. Old wounds, past loves, half-forgotten dreams: all are inscriptions, and none diminish your sanctity.

Her presence asks you to speak your truth aloud, to honour the symbols and scars that shaped you, and to craft the next chapter with intention. You are both the parchment and the pen. By embracing the marks of your journey, you become the storyteller rather than the tale told by others.

- **Identity:** Self-definition beyond expectations or inheritance.
- **Inscription:** Markings—literal or metaphorical—that declare your experience.
- **Storytelling:** Owning the narrative so others do not write it for you.

SHADOW SIDE

Clinging to old labels or performing a persona you've outgrown. Beware of letting your history become a cage.

PROMPT

What symbols, scars or memories tell the story of you? Which ones need rewriting—or celebrating—before you turn the page?



THE MIDNIGHT CLAIRVOYANT

INTUITION * GLIMPSES * SUBCONSCIOUS



She drifts through shadow and silver light, the hour thick with secrets. Three High Priestess cards slip between her fingers, murmuring what the waking world forgets. Beneath the full moon's cold regard, The Midnight Clairvoyant sees what hides in silence—and what your dreams have been trying to tell you.

DIVINATORY MEANING

The Midnight Clairvoyant arrives when hidden currents stir beneath the surface of your life. She is the keeper of what you cannot yet see—the flickers, omens, and patterns your conscious mind overlooks. Her cards, held with reverent precision, are keys to your own inner labyrinth, guiding you through the corridors of intuition and subconscious knowing.

Her presence encourages stillness and attention: to pause, to watch, to trust the impressions that arrive unbidden. Glimpses are seldom complete, yet they carry the weight of revelation. The Clairvoyant reminds you that answers often come as whispers, not proclamations, and that recognising subtle truths can avert upheaval or illuminate a path forward before it becomes obvious.

This card asks you to cultivate a dialogue with your inner self. Dreams, gut instincts, synchronistic signs—all are threads leading you to your own hidden wisdom. By acknowledging the unseen, you claim authority over what shapes your choices and your life.

- **Intuition:** Listening beyond logic; trusting inner guidance.
- **Glimpses:** Fleeting signs, subtle patterns, and understated truths.
- **Subconscious:** Hidden motives, memories, or desires that influence your waking reality.

SHADOW SIDE

Ignoring or doubting your intuition, or being swayed by surface appearances alone. Beware missing the quiet signals that hold critical insight.

PROMPT

What is your subconscious trying to reveal? Which quiet impressions have you dismissed that might guide your next step?



THE BEARDED VENUS

AUTHENTICITY * WHOLENESS * SELF-LOVE



She emerges from her shell, glittering and defiant, every curve and curl a hymn to wholeness. The lights catch her beard like fire, her body like art, daring the crowd to look and see. The Bearded Venus is both myth and mortal, blurring every line the world ever drew—and loving herself in every glorious inch of it.

DIVINATORY MEANING

The Bearded Venus appears when you are called to embrace your full, unedited self. She shatters illusions of what is “acceptable” or “beautiful,” reminding you that authenticity carries more power than perfection ever could. Wholeness is not achieved by trimming edges or hiding contradictions—it emerges when you honour every facet of yourself, the tender and the outrageous alike.

She asks you to lean into self-love, not as a fleeting sentiment but as a radical practice. Every mark, every quirk, every aspect of your body and being is part of your sacred completeness. In her presence, you are invited to dissolve shame, to celebrate sensuality, and to reclaim the authority to define your own value. The Bearded Venus is both mirror and muse: a daring reflection of what it looks like to inhabit your body and soul without compromise.

- **Authenticity:** Living in alignment with your true self, unmasked and unashamed.
- **Wholeness:** Integration of all parts of self, embracing contradictions and complexities.
- **Self-Love:** Radical acceptance and celebration of your body, choices, and being.

SHADOW SIDE

Rejecting or hiding aspects of yourself to conform, or mistaking flamboyance for self-worth. Beware valuing spectacle over sincerity.

PROMPT

Which parts of yourself have you concealed to fit the world’s expectations? How can you honour and display your whole self today, even in small ways?



THE DOUBLE ACT

PARTNERSHIP * SYNERGY * INTERDEPENDENCE



They move in rhythm, mirroring glances and unfinished sentences, two halves of a shared spark. Around them, the air hums with possibility—mischief, maybe magic. Alone, they shine; together, they ignite. What one begins, the other completes, and the world becomes their stage.

DIVINATORY MEANING

The Double Act appears when collaboration is more than convenience—it is alchemy. This card asks you to recognise the power of partnership, the magic that emerges when two people balance, challenge, and support one another. Synergy does not erase individuality; it honours it. Each presence in the duo strengthens the other, creating a force neither could manifest alone.

They call attention to interdependence—not as weakness, but as a sophisticated dance of give and take. Relationships, collaborations, or even temporary alliances hold potential for transformation if approached with trust and openness. The Double Act reminds you that some goals, insights, and joys are only achievable when energies combine, each one recognising the other's value.

- **Partnership:** Mutual support, collaboration, and aligned intention.
- **Synergy:** The sum is greater than its parts; combined energy yields exponential effect.
- **Interdependence:** Connection without co-dependency; strength through mutual respect.

SHADOW SIDE

Over-reliance on another, losing your voice in the duo, or entering partnerships without discernment. Beware alliances that drain rather than empower.

PROMPT

Who in your life amplifies your potential? How can you strengthen this connection while honouring your individuality?



THE ORACLE OF THE OPEN ROAD

FREEDOM * DISCOVERY * JOURNEY



She rides a carousel giraffe through the twilight, hair wild, guitar slung across her chest. Maps are for mortals; she follows instinct and rhythm, not direction. The wind carries her laughter like prophecy—a call to those who crave more than the ordinary. She isn't on the road; she is the road, and freedom is the only destination.

DIVINATORY MEANING

The Oracle of the Open Road arrives when the familiar has grown too small and your spirit craves motion. She embodies freedom in its purest form—the courage to leave what no longer serves, to wander without maps, and to embrace discovery on your own terms. Life's journey is not only about destinations but the roads you carve between them, the detours that reveal unexpected truths, and the experiences that shape your becoming.

She reminds you that exploration is sacred: each encounter, each risk, each moment of wonder feeds the soul. Following the road does not mean abandoning responsibility, but it does require trust—trust in your instincts, your curiosity, and the unseen forces guiding your way. The Oracle invites you to honour the rhythm of your journey and to find joy in the motion itself, knowing that every mile carries meaning beyond the horizon.

- **Freedom:** Release from restriction, the courage to act authentically.
- **Discovery:** Openness to new experiences, insights, and perspectives.
- **Journey:** Movement, transformation, and the lessons found along the way.

SHADOW SIDE

Restlessness without direction, fleeing rather than exploring. Beware chasing novelty at the expense of depth or grounding.

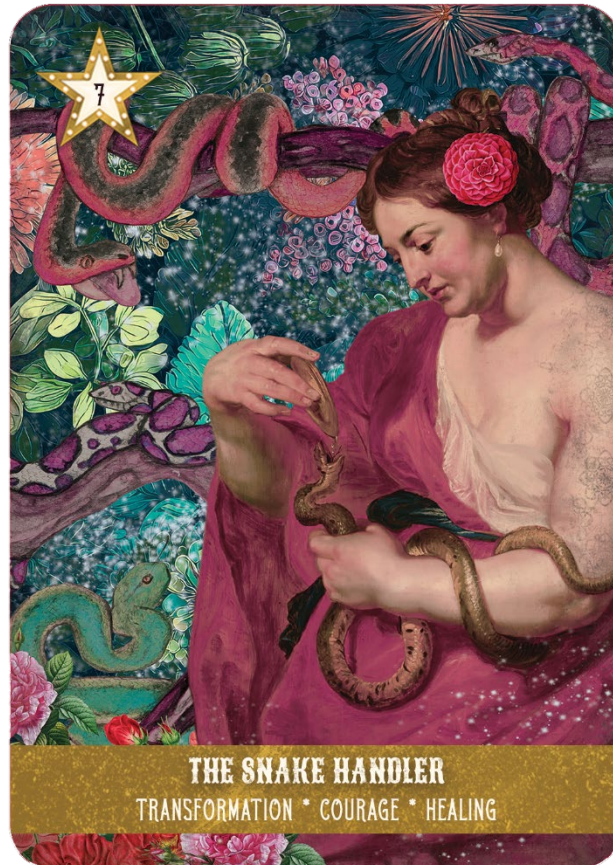
PROMPT

Where is your path calling you to move forward? What detours might reveal the lessons you need most?



THE SNAKE HANDLER

TRANSFORMATION * COURAGE * HEALING



She sits among twisting vines; a serpent coiled in her palms like living silk. Around her, others ripple through the grass—guardians of old secrets, keepers of renewal. The Snake Handler's gaze holds yours, steady and unflinching. In her stillness, fear becomes faith, and every shed skin is a promise of becoming.

DIVINATORY MEANING

The Snake Handler appears when you are being called to confront what frightens or unsettles you, for in those encounters lies deep transformation. She reminds you that courage is not absence of fear, but the willingness to engage with it tenderly. Healing often comes not from avoidance, but from touch, observation, and integration of what has been hidden or suppressed.

She guides you to recognise cycles: shedding what no longer serves, embracing growth, and attending to the parts of yourself that demand attention and care. The presence of serpents signals potent energy at work beneath the surface, offering the chance to transmute pain into wisdom, to reclaim power through gentleness and respect. In her garden, danger is met with devotion, and darkness is invited to teach rather than terrify.

- **Transformation:** Letting go of old patterns and emerging renewed.
- **Courage:** Engaging with fear and uncertainty with grace.
- **Healing:** Reclaiming balance, energy, and wholeness through careful attention.

SHADOW SIDE

Avoiding necessary confrontation or mistaking recklessness for bravery. Beware ignoring lessons the “snake” brings for the sake of comfort.

PROMPT

Where in your life is transformation waiting? How might you approach it with both courage and care?



THE TICKET TOUT

OPPORTUNITY * ACCESS * CONSEQUENCE



She leans beneath the flicker of the Moulin Rouge lights; a fan of forbidden tickets nestled against her heart. Each one gleams with promise—backstage secrets, whispered fortunes, doors that shouldn't open but might. The Ticket Tout's smile is slow, knowing, dangerous. The evening swirls with smoke and song as she tilts her head and asks, without words: How much are you willing to pay for the experience?

DIVINATORY MEANING

The Ticket Tout steps forward when opportunity beckons with glittering insistence. An offer, an introduction, an unexpected opening—something that could alter your trajectory is within reach. Yet her sly gaze is a reminder: every doorway leads somewhere, and every choice carries a price. Access is never without consequence.

Her presence invites you to look beyond the shimmer. What terms are hidden in the small print? Is this chance aligned with your deeper intentions or simply dazzling because it's immediate? The Tout teaches discernment. She knows that some invitations, once accepted, will change you in ways you cannot undo, and that true freedom lies in conscious choice.

Consider what you're willing to give for what you hope to gain. This card doesn't warn you away from the opportunity; it asks you to meet it with eyes wide open, to own the exchange, and to step through the door only when you are prepared to live with everything that follows.

- **Opportunity:** A sudden opening, an unexpected offer.
- **Access:** Entry to spaces, knowledge, or relationships previously closed.
- **Consequence:** The inevitable aftermath—rewards and responsibilities alike.

SHADOW SIDE

Grabbing at every chance without thought or rejecting opportunity out of fear. Beware agreements made in haste or with unclear terms.

PROMPT

What invitation stands before you now? Are you ready to accept the cost of entry—material, emotional, or spiritual?



THE LUMINARY

ENLIGHTENMENT * CLARITY * ILLUMINATION



She sits before the velvet-draped cosmos, a halo of sunfire crowns her. In her hand, a wand of starlight; around her, darkness dissolves. The Luminary needs no spotlight—she is the source. Her radiance spills into every corner, revealing what was always there. The truth, she reminds you, isn't hidden. It's simply been waiting for you to see it.

DIVINATORY MEANING

The Luminary appears when you are ready to step out of the half-light and into unmistakable clarity. She embodies the moment when confusion dissolves and truth stands bright, no longer hidden by doubt or distraction. Her presence signals revelation: insight that illuminates not only a single decision, but the deeper pattern of your path.

She reminds you that illumination is not merely intellectual—it is a full-bodied awakening. Enlightenment arrives as a felt certainty, a quiet but undeniable knowing that shifts the way you move through the world. The Luminary asks you to welcome this clarity, even if it exposes what you once preferred to ignore. True light reveals both beauty and flaw, and in that honesty lies liberation.

Her star-wand points to guidance beyond the obvious: the intuition that sharpens when you honour your inner wisdom, the sudden understanding that resolves long-standing questions. With the sun-halo blazing behind her, she blesses you with vision that reaches past surface appearances into the heart of the matter.

- **Enlightenment:** A breakthrough in understanding; spiritual or intellectual awakening.
- **Clarity:** Seeing the situation as it truly is, without distortion.
- **Illumination:** Insight that brightens the path ahead and dispels confusion.

SHADOW SIDE

Overexposure—revealing too much too soon or mistaking temporary brightness for lasting truth. Beware the arrogance of believing you now see *all* there is to know.

PROMPT

Where in your life is clarity trying to break through? What truth have you sensed in flickers that you are now ready to face in full light?



THE CURATOR OF CURIOSITIES

PRESERVATION * MEMORY * SIGNIFICANCE



She stands behind her counter of wonders, surrounded by relics that buzzes with the secrets of a thousand forgotten lives. Every tarnished trinket, every mismatched fragment, holds a story only she can translate. The Curator of Curiosities doesn't trade in things—she trades in meaning. With a knowing smile, she reminds you that treasure isn't found; it's remembered. Your life, after all, is the rarest collection of all.

DIVINATORY MEANING

The Curator of Curiosities arrives when the past is ready to speak. She reminds you that memory is not a static archive but a living dialogue between what was and what matters now. Each object in her care carries a story, a vibration, a lesson that survives the erosion of time. Her presence signals a moment to pause, sift, and choose: which memories deserve preservation, which deserve release, and which reveal their significance only when examined anew.

This card invites you to honour the power of keepsakes, traditions, and personal history without becoming bound by them. The Curator teaches that preservation is an act of love, but also of discernment. To keep everything is to bury meaning under clutter; to keep nothing is to forget the path that shaped you. She asks you to hold what is precious with reverence and to let the rest fall away.

When she appears, consider what you collect—stories, heirlooms, even habits—and ask why you keep them. Are they anchors, or are they talismans of strength and wonder? The Curator knows that significance lies not in the object itself but in the intention you give it.

- **Preservation:** Valuing and protecting what truly matters, whether tangible or emotional.
- **Memory:** Understanding the lessons and gifts of the past.
- **Significance:** Recognising the deeper meaning behind what you keep close.

SHADOW SIDE

Clinging to relics or memories out of fear of change. Beware nostalgia that limits growth or possessions that own you.

PROMPT

Which memories or mementos deserve a place of honour in your life? What can you release so that what remains gains greater meaning?



THE MISTRESS OF MISRULE

REBELLION * LIBERATION * DISRUPTION



She claims the centre of a pulsing nightclub, hands on hip, poised as if to spark a riot. Neon lights flash across her T-shirt—smash the patriarchy—while the crowd swells and shouts around her like a storm she commands. Every beat of the music seems to echo her defiance. Her arrival is the sound of shackles snapping. The Mistress of Misrule meets your gaze with a half-smile that says rules are only as strong as your willingness to obey them.

DIVINATORY MEANING

The Mistress of Misrule arrives when the established order has become a cage and something in you is ready to break it open. She is the embodied force of rebellion, the reminder that liberation rarely comes from polite requests or quiet endurance. Her presence signals a time to challenge structures, internal or external, that restrict your freedom or suppress your truth.

This card urges you to question the systems, habits, or relationships that have gone unchallenged. Disruption is not chaos for its own sake; it is the necessary cracking of old frameworks so something more authentic can emerge. The Mistress of Misrule teaches that rebellion can be creative as well as destructive, a way of clearing space for new growth and more honest connection.

She asks you to own your power without apology, to speak the words you've been holding back, to refuse the narratives that keep you small. Liberation begins when you stop asking permission.

- **Rebellion:** Daring to defy norms, expectations, or oppressive systems.
- **Liberation:** Freedom from constraints, self-imposed or societal.
- **Disruption:** The deliberate breaking of patterns to invite transformation.

SHADOW SIDE

Rebellion without purpose—burning bridges simply to watch them fall. Beware mistaking provocation for progress or letting anger eclipse intention.

PROMPT

Which rule, expectation, or belief no longer deserves your obedience? What bold action—large or small—could set you free today?



THE TREASURER OF SECRETS

TRUST * HISTORY * KNOWLEDGE



She walks the endless corridor of memory, where filing cabinets tower like temples and starlight leaks through half-open drawers. Each one holds a truth, a whisper, a confession too potent for daylight. One finger to her lips—silence. Her gaze meets yours, steady and knowing. The Treasurer of Secrets guards what must be kept until the moment it's ready to be found.

DIVINATORY MEANING

The Treasurer of Secrets arrives when you are called to honour the sanctity of what is hidden. She is the guardian of confidences, the keeper of histories that shape the present even when unspoken. Her presence signals a time to discern between what must be shared and what is meant to remain private. Not every truth needs an audience; some wisdom gains strength in stillness, revealing itself only when the seeker is ready.

This card invites you to consider the weight of trust. Are you safeguarding someone else's confidence? Holding knowledge that could shift a situation? The Treasurer reminds you that silence can be a sacred act, a form of protection and respect. Yet she also asks that you examine the secrets you keep from yourself—the memories, desires, or truths you have filed away because they felt too potent to confront.

Her cosmic archive is not merely a vault of the past but a living repository of understanding. Within it lie patterns and lessons that, when approached with reverence, can guide your next steps. The Treasurer counsels patience and careful timing: wisdom shared too soon can be squandered, while wisdom hoarded forever may stagnate.

- **Trust:** Honouring confidentiality, respecting boundaries, and being worthy of confidence.
- **History:** Recognising how the past—your own or collective—shapes the present moment.
- **Knowledge:** Deep understanding gained through observation, experience, and careful stewardship.

SHADOW SIDE

Keeping secrets that corrode rather than protect, or withholding truth out of fear or control. Beware confusing silence with avoidance.

PROMPT

What knowledge or memory waits in your own inner archives? Which truths are ready to be spoken—and which deserve the dignity of quiet?



THE PATRON SAINT OF TOO MUCH

ABUNDANCE * OVERWHELM * INDULGENCE



She lounges amid a riot of excess, champagne raised, cake and cash her obedient attendants. Opulence clings to her like armour, daring you to join the revelry. Dive in, she seems to say—taste it all, let abundance overwhelm you. Yet behind the glittering smile, The Patron Saint of Too-Much knows the fine edge where pleasure spills into peril, and watches with steady, knowing eyes.

DIVINATORY MEANING

The Patron Saint of Too-Much arrives when life tips toward the extravagant—whether in pleasure, responsibility, or sensation. She embodies the lushness of abundance, the delight of having more than enough, but she also whispers of the fine line between enjoyment and excess. Her presence invites you to savour what is good and plentiful, to celebrate beauty and comfort without apology.

Yet she also offers a gentle caution. Overindulgence—whether in spending, commitments, or emotion—can numb rather than nourish. Abundance is a gift, but it asks for discernment: to know when fullness becomes clutter, when sweetness becomes a distraction from deeper hungers.

This card calls you to examine your relationship with plenty. Are you feasting on life's pleasures with gratitude and awareness, or are you chasing more to avoid what lies beneath? The Patron Saint teaches that true richness is measured not by quantity but by conscious enjoyment and the ability to share.

- **Abundance:** The blessing of resources, beauty, and pleasure in many forms.
- **Overwhelm:** The tipping point where “more” begins to obscure meaning.
- **Indulgence:** The art—and risk—of surrendering to desire and luxury.

SHADOW SIDE

Greed, compulsive excess, or escapism through pleasure. Beware using abundance to mask emptiness or to delay necessary choices.

PROMPT

Where in your life are you invited to revel and receive? And where might a pause—savouring rather than consuming—bring deeper satisfaction?



THE MUSE WHO REFUSED

SOVEREIGNTY * BOUNDARIES * INSPIRATION



She stands centre-stage, fire-red hair blazing against shadowed drapes, gold-specked fabric clinging like defiance made flesh. One hand rises in absolute refusal, the other grips a scroll marked Not Your Muse. An unfinished canvas trembles at her side, unable to contain her. Her eyes meet yours—unyielding. The Muse Who Refused is no vessel; she is the author of her own vision, and nothing less will suffice.

DIVINATORY MEANING

The Muse Who Refused arrives to remind you of your sovereignty. Too often inspiration is framed as belonging to someone else's narrative—a spark extracted, a story bent to another's will. This card signals the time to reclaim your own creative fire and to establish the boundaries that protect it. Your energy, your ideas, your very presence are not commodities to be consumed at will; they are sacred forces that deserve respect and reciprocity.

This card encourages you to examine where you have allowed others to define your role, diminish your vision, or feed from your brilliance without acknowledgement. Her raised hand is an invitation to pause, to ask: *Who benefits from my light, and at what cost?* Refusal, in this context, is not rejection of creativity but a radical act of self-possession. Inspiration is not something you merely give—it is something you live, on your terms.

She teaches that saying *no* is as powerful an act of creation as saying *yes*. By refusing to be diminished into an ornament or tool, you make space for the true pulse of your artistry, your voice, your calling to emerge.

- **Sovereignty:** Owning your creative power and refusing to be defined by others.
- **Boundaries:** Drawing clear lines to protect your energy, ideas, and time.
- **Inspiration:** Tapping into your creative current as an act of self-expression, not self-erasure.

SHADOW SIDE

Resistance that calcifies into bitterness, or boundaries wielded as barriers against genuine connection. Be cautious of mistaking defensiveness for empowerment.

PROMPT

Where are you being asked to raise your hand and say *no more*? What might flourish if you claimed your own story rather than playing a role in someone else's?



THE QUEEN OF FLEETING MOMENTS

IMPERMANENCE * PRESENCE * APPRECIATION



Crowned yet unguarded, The Queen of Fleeting Moments perches at the water's edge, waves brushing her chaise longue like gentle reminders. In her hand, a mirror trembles with reflection, never still, never complete. A fragile sandcastle rises behind her, proud yet destined to dissolve. She reigns with quiet grace, knowing that every moment is fleeting—and every loss is its own kind of gift.

DIVINATORY MEANING

The Queen of Fleeting Moments appears when you are asked to notice the transient beauty of the present. She reminds you that life is composed of passing instants—waves that crash and dissolve, reflections that shift, creations that weather and fade. Rather than clinging or mourning, she encourages you to savour the richness of *now*, to embrace each encounter and experience for what it is: a gift that cannot be held, only lived and can never, ever again to be repeated.

This card asks you to pause and breathe in what surrounds you. Appreciation is not about permanence, but instead it's the capacity to see the magic in the temporary. A smile, a sunset, a conversation, even the ache of longing: all of these carry their own brief radiance. When you stop trying to preserve them, you free yourself to fully experience them.

The Queen also brings a gentle reminder of impermanence as liberation. The things that weigh heavy today may pass like tides; the structures that seem immovable may erode into opportunity. Her lesson is not despair, but release: nothing lasts forever, and therein lies both the sorrow and the splendour of existence.

- **Impermanence:** The fleeting nature of all things, from beauty to sorrow.
- **Presence:** Choosing to meet life in the moment, not in memory or projection.
- **Appreciation:** Finding gratitude in what is, even as it shifts or fades.

SHADOW SIDE

Grief that hardens into resistance, clinging to what cannot be preserved, or fear of loss that blocks joy.

PROMPT

What fleeting moment is asking for your attention right now? How might appreciation—not attachment—transform your relationship to it?



THE LAUNDRESS OF STAINED SOULS

CLEANSING * ABSOLUTION * FORGIVENESS



In a chamber of stone, part sanctuary, part laundry, The Laundress of Stained Souls lifts a glowing cloth toward the light. The old washing machine hums with cosmic purpose, its drum turning the world itself. Garments gleam, bottles of Bleached Souls Formula and Dirt Catcher at her side, reminders that even the darkest stains can be undone. Roses bloom nearby—proof that grace survives, even in the humblest of rituals.

DIVINATORY MEANING

The Laundress of Stained Souls appears when it is time to release what weighs you down—the marks of regret, shame, or old hurts that cling to your spirit like set-in stains. Her presence reassures you that nothing is beyond cleansing, no matter how stubborn the residue. With patience and compassion, even the most tarnished corners of your soul can be rinsed of their heaviness, leaving room for renewal.

This card invites you to step into the quiet ritual of forgiveness. Not as a performance, not for others' comfort, but as an act of liberation—for yourself most of all. Forgiveness is not forgetting, nor does it absolve wrongdoing; instead, it frees your heart from the endless spin-cycle of pain. The Laundress reminds you that healing is both ordinary and miraculous, carried out in small acts of release as much as in grand transformations.

At its heart, this card asks you to trust in the alchemy of cleansing. Whether through words spoken, tears shed, or rituals performed, you have the power to strip away the remnants of old sorrows and restore lightness to your being.

- **Cleansing:** Releasing accumulated burdens, negativity, and old narratives.
- **Absolution:** The grace of being freed from guilt or past mistakes.
- **Forgiveness:** Choosing release over resentment, renewal over repetition.

SHADOW SIDE

Clinging to guilt, shame, or bitterness; demanding perfection before forgiving yourself or others. Beware mistaking punishment for penance.

PROMPT

What stain are you ready to surrender? How might your life feel lighter if you trusted in the possibility of true cleansing?



THE ARTISTE OF DEJA VU

REPETITION * PATTERNS * FAMILIARITY



She faces a blank canvas, yet the moment repeats in endless golden frames, each mirroring her, her art, her stance. The wall behind ripples with mottled colour, but the loop remains—a creation paused, relived, remembered. The Artiste of Déjà vu is the painter who has already painted, the performer who has already performed. Time bends around her, and familiarity becomes its own strange spectacle.

DIVINATORY MEANING

The Artiste of Déjà Vu arrives when you find yourself circling familiar territory—encountering the same lessons, relationships, or choices with uncanny similarity. This is not coincidence, but pattern. She reminds you that life will echo its themes until their message is acknowledged, until you choose a different brushstroke, a fresh palette.

Her presence is both comforting and challenging. Comforting because the familiar can feel safe, a rhythm you already know by heart. Challenging because stagnation hides within repetition: the risk of walking circles when the path longs to move forward. This card asks you to look at what is replaying in your life. Is it an old story disguised as new, a cycle that calls for closure, or a skill being refined through practice?

Déjà vu is more than a trick of the mind—it is the soul's whisper: *You've been here before. What will you do differently this time?* The Artiste asks whether you will continue to replicate or dare to create anew.

- **Repetition:** Recognising cycles, loops, and recurring experiences.
- **Patterns:** Identifying underlying structures that shape your choices and outcomes.
- **Familiarity:** The comfort of the known, and the potential to outgrow it.

SHADOW SIDE

Becoming ensnared in cycles of avoidance, self-sabotage, or nostalgia. Reliving the past instead of living the present.

PROMPT

Where in your life are you replaying an old scene? What small change could shift the entire picture?



THE SEAMSTRESS OF SEVERED FATES

RECONNECTION * MENDING * DESTINY



She leans over her table, candlelight flickering across a tangle of bone, bloom, and thread. Needle in hand, she stitches hearts into skeletons, petals into veins—life creeping into what has already died. Scissors glint at her side, ready to snip, to separate, to decide. Skulls, cauldrons, and spools of thread watch in silent anticipation. Behind her, a palmistry hand whispers of paths already written. The Seamstress of Severed Fates alone can weave what was once broken into something new.

DIVINATORY MEANING

The Seamstress of Severed Fates comes when bonds or pathways are ready to be rewoven. She represents the delicate work of mending what has been torn apart—relationships, choices, even pieces of the self once thought lost. Her stitching is not hasty; it is deliberate, conscious, aware that some seams require patience and precision. In her presence, you are asked to consider what is fraying in your life and whether it calls for repair, release, or redirection.

This card also speaks to the interplay between destiny and free will. The scissors in her hand remind us that some threads must be cut, yet the needle insists that others may be joined again. You are never entirely powerless nor entirely bound; you are co-creator with the fabric of life itself. The Seamstress invites you to step into this dual role, to choose where to invest your energy and where to unpick what no longer belongs.

Reconnection, for her, is not simply returning to what was. It is the transformation: of weaving together loss and renewal to create a new design. She whispers that destiny is not fixed—it is embroidered anew with every stitch you choose to make.

- **Reconnection:** Revisiting or reweaving broken ties, lost parts, or old pathways.
- **Mending:** Healing through conscious repair, patience, and craft.
- **Destiny:** Accepting your role as both inheritor of fate and active shaper of it.

SHADOW SIDE

Becoming entangled in old threads that should remain severed. Obsessively trying to fix what is beyond repair. Letting fear of cutting ties keep you bound to what drains you.

PROMPT

What thread in your life is calling for repair, and which one is waiting to be cut? How might your destiny shift with a single stitch or snip?



THE COMEBACK QUEEN

RESILIENCE * EXPERIENCE * SECOND CHANCES



She soars atop a phoenix, satin gown trailing pink flames. Jewels and feathers catch the light; pearls tumble like memories remade. Her smile is tempered, sharpened by every fall she has survived. Beneath her, the phoenix blazes, wings striking the star-flecked sky. The Comeback Queen is both rider and risen, the living proof that every downfall can be rewritten in brighter ink.

DIVINATORY MEANING

The Comeback Queen arrives to remind you that resilience is not about never falling—it is about rising differently, more brilliantly, each time you do. She represents the strength gained through experience, the wisdom won by weathering trials, and the grace of embracing second (or third, or tenth) chances without shame. Her presence signals that something in your life is ready to be reborn, carried forward on wings stronger for having once been broken.

This card asks you to trust the cycles of destruction and renewal. What has ended for you may not be lost but transformed into fertile ground for your next beginning. The Queen rides her phoenix not in desperation but with poise, knowing that what returns carries new depth, new dignity. She urges you to embrace the story of your scars, to let them glitter like the jewels on her headdress—proof of survival, proof of becoming.

Second chances do not mean repeating the past unchanged; they mean stepping forward with wisdom earned, writing a new ending where once there was only ash. The Comeback Queen insists that resilience is not endurance alone—it is the art of thriving after the fall.

- **Resilience:** Rising after difficulty, drawing strength from survival.
- **Experience:** Learning from the past, carrying forward wisdom.
- **Second Chances:** The opportunity to begin again, transformed.

SHADOW SIDE

Refusing to let go of old defeats or expecting new beginnings to look exactly like the past. Romanticising suffering instead of recognising its lessons.

PROMPT

What part of your life is ready for a comeback? How can you rise not as you were, but as the one who has already walked through fire?



THE FLAMINGO DANCER

BALANCE * SPECTACLE * COMMITMENT



She freezes mid-spin, a blaze of pink feathers fanning like fire. A tilted parasol steadies her, half ornament, half anchor, in a world of artifice and allure. Silver stars scatter above, sequins in the tropical glow. At her feet, two flamingos stand sentinel, gaudy and exacting. She is the Flamingo Dancer—every flourish a testament to the courage it takes to perform with perfection and abandon.

DIVINATORY MEANING

The Flamingo Dancer steps into your spread to remind you of the balance between beauty and discipline. Behind every breathtaking display lies a thousand careful choices, a commitment to practise, and a willingness to stand steady even when the spotlight dazzles. She represents the art of performance—not as a mask, but as a ritual of dedication, devotion, and rhythm.

This card invites you to reflect on where in your life you are called to hold your balance amidst spectacle. Are you performing for others, or are you dancing for yourself? Either way, commitment is the through-line: to maintain grace requires focus, to create art requires consistency. She encourages you to honour the glamour of your efforts, to embrace a little theatre, but also to ground yourself in the deeper work that sustains it.

The Flamingo Dancer reminds you that balance is dynamic, not static. It is the constant adjusting of weight and energy, the willingness to sway and stretch without collapsing. Commitment to your path, your craft, or your relationships will require this living balance—and when achieved, it can be dazzling.

- **Balance:** The art of poise in motion, maintaining harmony through focus and flexibility.
- **Spectacle:** Embracing visibility, flair, and the joy of performance.
- **Commitment:** Dedication to practice, discipline, and the steady pursuit of your vision.

SHADOW SIDE

Losing yourself in show without substance. Straining to maintain appearances at the cost of inner balance. Neglecting discipline in favour of spectacle—or clinging so tightly to discipline that joy evaporates.

PROMPT

Where in your life are you called to hold your balance? How might greater commitment to practice or purpose help you step more fully into the spotlight?



THE DRAG KING

CONFIDENCE * PERFORMANCE * EXPRESSION



He owns the stage before a single word is spoken. Every gesture, every step, commands attention; the air is thick with anticipation. Neon KING glows behind him, but he outshines the lights, every movement a declaration of self-possession. The microphone waits, but The Drag King doesn't need it—his presence is the performance, bold, unflinching, and utterly magnetic.

DIVINATORY MEANING

The Drag King embodies the transformative power of performance and the courage it takes to step into your chosen role. This card celebrates the art of presentation, where clothing, stance, and voice become extensions of identity, not disguises but revelations. Confidence is not always about being loud as it can live in the tilt of a hat, the curve of a smirk, or the unshaken gaze that says, *I know who I am.*

When this card appears, it asks: how are you expressing yourself? What version of you longs to step onto the stage? The Drag King reminds you that identity is a living performance, one you get to direct and costume as you choose. Expression is power, and embracing it—whether subtle or flamboyant—helps you claim your space in the world.

- **Confidence:** Standing in your truth with assurance and presence.
- **Performance:** The deliberate art of showing up, choosing how you are seen.
- **Expression:** Freedom to shape, reveal, and revel in your identity.

SHADOW SIDE

Over-identifying with the performance, confusing persona with authenticity. Fear of being seen without the costume or hiding behind roles to avoid vulnerability. Striving for validation rather than self-expression.

PROMPT

What part of yourself is ready to take the stage? How might performance or playful self-expression become a tool for your confidence rather than a mask?



THE VEILED ENIGMA

MYSTERY * REVELATION * CIPHER



She sits upon a floating carpet, drifting through shadow and starlight, eyes sharp and knowing. Secrets coil around her like smoke, teasing and half-hidden. Tiny motes shimmer in the air, whispers of what is and what might be. Butterflies flit past, delicate heralds of mischief and change. She is the Veiled Enigma—every glance a puzzle, every motion a promise of revelation.

DIVINATORY MEANING

The Veiled Enigma appears when something significant lies hidden, waiting to be perceived. This card embodies the allure and challenge of mystery—the idea that not all truths are immediately accessible, and some require patience, observation, or intuition to decipher. She asks you to lean into uncertainty without panic, to honour the process of discovery as much as the revelation itself.

This card also signals that messages are layered, encoded, or symbolic. What you see at first glance may only hint at deeper meaning. The Enigma encourages curiosity, careful attention, and trust in your interpretive abilities.

Transformation comes through understanding the unseen, piecing together fragments of information, and recognising that some truths are delicate, emerging like butterflies from shadow.

Her presence reminds you that mystery is not absence, but a field ripe with potential. What is veiled is not necessarily withheld; it is waiting for the right moment, the right observer, and the right intention.

- **Mystery:** Hidden truths, subtle signals, and the beauty of the unknown.
- **Revelation:** Insight that emerges through patience, perception, and attention.
- **Cipher:** Layers of meaning that require interpretation, intuition, and care.

SHADOW SIDE

Obsession with secrecy or over-analysis that blocks insight. Ignoring subtle cues or dismissing the unknown out of fear.

PROMPT

What truth is partially hidden from view, waiting for your attention? How might patience and curiosity illuminate the next step on your path?



THE TRAPEZE ARTIST'S DAUGHTER

INHERITANCE * RISK * PROWESS



She arcs through the air, silk ribbon stretching impossibly beneath her. Every movement is precise, honed from blood, muscle, and inherited skill. Dust swirls in the spotlight as she twists, turns, and flirts with gravity itself. She carries the weight of legacy yet dances with danger at every heartbeat. She is the Trapeze Artist's Daughter—risk embodied, mastery alive, and every flight entirely her own.

DIVINATORY MEANING

The Trapeze Artist's Daughter appears when you are called to step into inherited gifts or responsibilities—skills, wisdom, or courage passed down through family, mentors, or tradition. She reminds you that mastery requires both respect for what you have been given and the willingness to take risks that push beyond it.

This card signals a moment where agility and boldness are required. You may find yourself suspended between what is known and what is possible, poised in a space where failure and triumph are equally likely. Her presence encourages you to embrace your prowess, to trust the training and experience that have brought you here, and to leap despite the height, trusting your own strength.

Risk is not reckless but deliberate; each movement is informed by practice, intuition, and inherited knowledge. The Trapeze Artist's Daughter invites you to consider where your own legacy—talent, lessons, resilience—can be activated to elevate not just yourself, but those who follow.

- **Inheritance:** Gifts, skills, or responsibilities received from past generations or mentors.
- **Risk:** The courage to act boldly, even (maybe especially) when outcomes are uncertain.
- **Prowess:** Mastery, skill, and confidence earned through dedication and practice.

SHADOW SIDE

Fear of failure, hesitation, or relying too heavily on legacy without carving your own path. Avoiding the leap because the consequences feel too high.

PROMPT

Where in your life are you ready to take a calculated leap, trusting in the skills you have inherited or developed? How can your courage elevate both yourself and others?



THE BACKSTAGE BITCH

JUDGEMENT * CRITIQUE * BLUNTNES



She lounges where the lights glare, eyes cutting like knives. A scorecard flicks out her verdict—merciless, precise, with a lipstick kiss that's more mockery than charm. Nothing survives her gaze; illusions crumble, egos shatter. She is the Backstage Bitch—ruthless, sharp-tongued, and deliciously satisfied when the truth stings.

DIVINATORY MEANING

The Backstage Bitch arrives when clarity and honesty are required. She represents the necessity of critique, both given and received, to refine your path and clarify your choices. Her presence signals a moment where sugarcoating is unhelpful: it is time to see things as they truly are, to recognise weaknesses without shame and strengths without arrogance.

This card encourages discernment, reminding you that judgement is not inherently negative—it is the tool that separates mediocrity from excellence. Whether evaluating your own actions, a relationship, or a creative endeavour, her bluntness demands accountability and sharp perception.

She also serves as a mirror for self-awareness: how kindly, or how ruthlessly, are you judging yourself? The Backstage Bitch shows that honest critique can be a form of care, provided it is wielded with awareness rather than malice. Her scorecard is a reminder that recognition and correction are intertwined, and that growth often begins where comfort ends.

- **Judgement:** Assessing with honesty and clarity, separating truth from illusion.
- **Critique:** Offering or receiving constructive, sometimes harsh, feedback to foster growth.
- **Bluntness:** Directness that cuts through pretence, revealing what truly matters.

SHADOW SIDE

Harsh criticism wielded without empathy or avoiding feedback out of fear of being hurt. Overly self-critical, leading to paralysis or shame.

PROMPT

Where in your life are you being called to honest assessment? How can you receive or give critique in a way that sharpens rather than diminishes?



THE ABSINTHE ALCHEMIST

TRANSMUTATION * VISION * CREATIVITY



She stands at the heart of an underground workshop, eyes wide with unseen worlds. Flames leap from one hand; thick, luminous liquid flows from the other. A green absinthe bottle rises, wormwood spiralling skyward, an etched fairy winking like a conspirator. Sparks twist through the air, and magic seems to pulse from her very being. The Absinthe Alchemist turns vision into transformation, chaos into wonder, imagination into life.

DIVINATORY MEANING

The Absinthe Alchemist appears when transformation is at hand, often in unexpected or intoxicating ways. She embodies the power to transmute raw materials—ideas, experiences, emotions—into something new, visionary, and entirely your own. Her presence signals a moment to embrace experimentation, risk, and the unknown, trusting that creativity can convert chaos into insight.

This card encourages you to lean into your visionary capacities. What seems overwhelming or fragmented may be exactly the ingredients needed for your next great creation. She reminds you that true alchemy requires attention, patience, and courage: the slightest misstep can yield a minor disappointment or a spectacular breakthrough. Her magic is both literal and symbolic, inviting you to explore unseen connections and hidden potential within yourself and your environment.

The Absinthe Alchemist also calls for bold imagination—seeing not only what is, but what could be. She asks you to recognise that transformation is often messy, intoxicating, and unpredictable, yet deeply necessary for growth.

- **Transmutation:** Transforming raw experiences, challenges, or resources into new forms of wisdom or creativity.
- **Vision:** Seeing possibilities beyond the ordinary, perceiving patterns and potential in chaos.
- **Creativity:** Harnessing inspiration and intuition to manifest unique outcomes.

SHADOW SIDE

Becoming lost in indulgence, distraction, or obsession with outcomes. Risking harm by rushing experimentation without thought. Creativity blocked by fear of imperfection or failure.

PROMPT

What part of your life or self is ready to be transformed? How can you harness imagination and courage to create something entirely new from the raw materials at hand?



THE CARNIVAL QUEEN

CELEBRATION * LEADERSHIP * JOY



She bursts through a storm of confetti and streamers. Curls tumble and necklaces catch the light as her garment whirls with the motion of the crowd. She doesn't just join the celebration—she commands it, every laugh, every gasp, every spark of joy orbiting her. She is the Carnival Queen, and the festival exists wherever she steps.

DIVINATORY MEANING

The Carnival Queen appears when you are called to embrace celebration, joy, and the full expression of life's pleasures. She embodies leadership not through control, but through the magnetism of presence—the ability to inspire others simply by fully inhabiting your own vitality. Her arrival signals a time to step into the spotlight, to recognise your power to uplift and energise those around you, and to honour the playful, exuberant aspects of yourself.

This card invites you to find the rhythm in your own life, to move with abandon when it feels right, and to acknowledge achievements, milestones, and small victories with ceremony. Joy is not frivolous; it is catalytic. Celebration opens the channels for creativity, connection, and renewal. The Carnival Queen reminds you that leadership and influence are amplified when tempered with generosity, laughter, and light-heartedness.

- **Celebration:** Acknowledging life's pleasures, achievements, and moments of delight.
- **Leadership:** Guiding others through presence, charisma, and inspiration rather than authority.
- **Joy:** Fully inhabiting pleasure, play, and the vibrant aliveness of the present.

SHADOW SIDE

Overindulgence, superficiality, or using spectacle to mask insecurity. Neglecting responsibility or depth in favour of perpetual performance.

PROMPT

Where in your life are you ready to step into the spotlight and celebrate? How can joy and exuberance become a guiding force rather than an escape?



THE MIME OF FORBIDDEN WORDS

UNSPOKEN * TABOO * SUPPRESSION



She sits with a mandolin stamped CENSORED, mouth sealed with a stark black "X," eyes sharp and melancholy. Music hovers at her fingertips, yet silence binds her. Behind her, books ignite in blue, red, and orange flames, sparks curling like forbidden secrets. The Mime of Forbidden Words is a vivid testament to knowledge and passion denied, simmering, waiting for the moment to speak.

DIVINATORY MEANING

The Mime of Forbidden Words appears when there is something vital that is unspoken, suppressed, or considered taboo. This card asks you to examine where your voice has been stifled—by circumstance, expectation, or fear. While silence may feel protective, it can also block growth, creativity, and the release of energy that longs to be expressed.

This card also points to the tension between restriction and desire. Like the mandolin under the *CENSORED* stamp, your gifts or insights may be constrained, but the potential for resonance remains. You are encouraged to acknowledge what is muted within yourself, to honour the power of expression even if it must first be contained or coded.

The Mime of Forbidden Words is a reminder that even when speech is forbidden, influence and impact persist. Listening closely—both to your inner voice and the unspoken currents around you—reveals truths that cannot be captured in conventional language.

- **Unspoken:** Awareness of thoughts, emotions, or truths that remain hidden or unexpressed.
- **Taboo:** Engagement with what is considered off-limits or socially forbidden.
- **Suppression:** Recognising constraints and the power they hold over creativity, expression, or freedom.

SHADOW SIDE

Silencing yourself excessively or internalising taboo until it becomes toxic. Using secrecy to manipulate or avoid accountability.

PROMPT

What have you been holding back? How might acknowledgement, subtle expression, or strategic release allow your voice to be heard, even in restraint?



THE PICKPOCKET'S MARK

VULNERABILITY * AWARENESS * DECEPTION



She smiles, warm and mischievous, hands resting lightly over the treasures she carries. A carousel of gilded chains and spinning lights whirls behind her, a stage of distraction and desire. Every glance and gesture draws attention, tests perception, and invites risk. She is the Pickpocket's Mark—temptation made visible; vulnerability sharpened into artful awareness.

DIVINATORY MEANING

The Pickpocket's Mark arrives when awareness is needed around vulnerability and attention. She reminds you that danger often comes disguised as charm, excitement, or opportunity, and that discernment is essential in seemingly innocuous situations. This card urges mindfulness of where energy, trust, or resources may be at risk—both literally and metaphorically.

She also points to the delicate balance between openness and self-protection. Vulnerability can be a strength, fostering connection and authenticity, but without awareness, it can be exploited. The Mark is a reminder to cultivate perceptiveness, to notice subtle cues, and to recognise when temptation or distraction may be leading you off your path.

The chaotic backdrop of the fairground mirrors life's unpredictability: even in glittering spaces of pleasure, attention must remain sharp. This card asks you to discern who or what is trustworthy, and where caution is warranted.

- **Vulnerability:** Acknowledging openness and sensitivity, while recognising the need for self-care.
- **Awareness:** Maintaining vigilance, attention, and discernment in dynamic or enticing environments.
- **Deception:** Recognising charm, distraction, or trickery for what it is, and acting accordingly.

SHADOW SIDE

Naivety or blind trust that leaves one open to exploitation. Over-guardedness that prevents meaningful connection.

PROMPT

Where might you be overlooking subtle risks or distractions? How can you remain open and engaged while protecting your boundaries and resources?



THE BLACK MARKET BALLERINA

ILLCIT * COMPOSURE * SHADOW-SELF



She balances perfectly, tutu and fedora poised, body a study in grace and control. A bulging bag of cash rests in her hands, every note a temptation. The urban night hums behind her, alive with hidden deals and shadowed exchanges. The Black Market Ballerina moves through risk like dance, poise her weapon, opportunity her stage.

DIVINATORY MEANING

The Black Market Ballerina arrives when you are navigating the liminal spaces between light and shadow, legality and cunning, risk and reward. She embodies composure in morally complex or high-stakes situations, reminding you that grace under pressure is a skill honed by experience and self-awareness.

This card invites reflection on your own shadow-self: the parts of you that operate in secrecy, that skirt convention, or that thrive in unconventional strategies. It does not condone unethical behaviour but recognises the necessity of acknowledging all facets of your psyche—your resourcefulness, daring, cunning, and adaptability—without denial.

She also serves as a reminder that power and opportunity often appear disguised, and that discernment is essential. Like a ballerina on a precarious stage, you are being asked to maintain balance, precision, and focus even in environments that feel morally or socially ambiguous.

- **Illicit:** Encounters with hidden, taboo, or morally complex elements of life.
- **Composure:** Remaining poised, disciplined, and effective under pressure.
- **Shadow-self:** Recognising and integrating hidden, unconventional, or suppressed aspects of identity.

SHADOW SIDE

Acting recklessly, hiding behind secrecy for personal gain, or ignoring ethical boundaries. Suppression of shadow aspects can lead to unexpected consequences.

PROMPT

Where in your life are you navigating morally or emotionally complex terrain? How can you act with skill, awareness, and balance without losing integrity or composure?



THE BACK ALLEY ORACLE

WISDOM * GRIT * PROPHECY



She leans on a dented metal dustbin, the deep blue and cosmic threads of her dress catching the dim streetlight, eyes steady and unflinching. The brick wall behind her is scrawled with faded signs, whispers of prophecy surviving the grime and a testament to wisdom thriving in unconventional spaces. The Back Alley Oracle earned her insight in alleys and backstreets; grit carried in the quiet authority she radiates.

DIVINATORY MEANING

The Back Alley Oracle arrives to remind you that insight and prophecy often emerge from unexpected, unpolished, or overlooked places. Wisdom is not confined to grand stages or pristine settings; it thrives in grit, in observation, and in experience tempered by reality. This card calls attention to the value of practical, hard-earned knowledge, and the power of foresight grounded in resilience.

She invites you to trust intuition and the messages that come from the edges—the overlooked, the hidden, the places where polish is absent, but truth is abundant. The Oracle's presence encourages discerning observation, patience, and the courage to act on subtle or unconventional guidance.

- **Wisdom:** Deep understanding derived from experience and observation.
- **Grit:** Strength, endurance, and perseverance in challenging circumstances.
- **Prophecy:** Insight into possible outcomes, guidance from intuition, and foresight.

SHADOW SIDE

Overvaluing external polish over substance, dismissing unconventional sources of wisdom, or becoming cynical due to harsh realities.

PROMPT

Where in your life might overlooked or unconventional guidance hold the answers you seek? How can you cultivate insight from experience, observation, and grit?



THE SWORD SWALLOWER'S WIDOW

GRIEF * LEGACY * POISE



She does not mourn—she becomes the monument. A single white magnolia rests in her hand; grief held like a blade. Beside The Sword Swallower's Widow, a polished sword leans against the tomb of a master lost, legacy unbroken. Mist curls at her feet, silent and profound. Every gesture, every still breath, carries the weight of absence transformed into quiet, iron-willed strength.

DIVINATORY MEANING

The Sword Swallower's Widow appears when grief, remembrance, and the weight of legacy converge. She represents the quiet strength required to carry forward after profound loss, and the way poise can serve as both shield and bridge between the past and present. Her presence invites reflection on what has been inherited—both tangible and intangible—from those who are no longer with us, and how that legacy shapes the choices you make today.

This card also asks you to honour your own resilience in the face of sorrow. Grief does not diminish agency; it is a companion that can deepen understanding, foster empathy, and reveal the enduring power of memory. The Widow reminds you that composure and reflection are active, not passive, practices: they preserve dignity while allowing space for emotional truth.

- **Grief:** The acknowledgment and processing of loss.
- **Legacy:** Inherited influences, lessons, and memories that shape your path.
- **Poise:** Maintaining dignity, balance, and composure amid challenge or sorrow.

SHADOW SIDE

Suppressing grief or emotion entirely, clinging too tightly to the past, or allowing sorrow to inhibit growth.

PROMPT

What legacy are you honouring, and how can you move forward with both memory and grace? Where might composure serve as a tool for healing rather than concealment?



THE PIMPSTRESS

POWER * NEGOTIATION * AGENCY



The Pimpstress doesn't ask—she takes. Every room bends to her, a stage, a boardroom, an empire. Deals tilt in her favour, bargains sealed before the first word is spoken. She built her crown from audacity and wit, stitched power into her very skin. Part predator, part performer, always in control—her message is clear: seize power, flaunt it, and never apologise.

DIVINATORY MEANING

The Pimpstress enters when you are called to own your agency and renegotiate the terms of your power. She represents mastery of presentation and the recognition of self-worth. Her strength is not brute force but strategy: knowing the value of her influence and ensuring she is compensated, respected, and honoured accordingly.

This card is a reminder that negotiation is an art form. To advocate for yourself is neither petty nor greedy but an essential act of sovereignty. The Pimpstress asks you to examine where you are selling yourself short, where others are profiting from your silence or inaction, and how you might take the throne of your own circumstances with unapologetic authority.

- **Power:** Authority rooted in self-possession and control over one's narrative.
- **Negotiation:** The art of striking terms that honour both sides but never sacrifice your worth.
- **Agency:** Acting with autonomy, confidence, and deliberate self-respect.

SHADOW SIDE

Manipulation, exploitation, or leveraging influence in ways that diminish others. Over-identifying with control at the expense of empathy.

PROMPT

Where in your life are you undervaluing your influence? How might stepping into unapologetic agency shift the balance of power in your favour?



THE BROKEN VIOLINIST

MELANCHOLY * SILENCE * RESTORATION



Her hands rest on the violin, burden and solace entwined. Tears streak The Broken Violinist's pale face, black as kohl, the marks of grief that will not be hidden. The instrument at her shoulder is broken, mute testimony to a voice interrupted. And yet, in the silence, there is a quiet promise—that even stilled gifts can be heard again.

DIVINATORY MEANING

The **Broken Violinist** speaks to **grief**, the profound pauses, and the aching silences in life that can often feel unbearable. Her dramatic presence reminds us that art, love, and even joy are not immune to breaking—and that embracing these inevitable fractures is a fundamental part of being human. This card acknowledges emotional exhaustion and heartbreak, but it also carries a powerful, subtle message: silence is not the final note. Instead, it is a **resting point**, a necessary and deep suspension that must be honoured before the work of renewal can begin.

She urges you to allow and **honour your melancholy without shame** or the need to rush toward a false cheer. To sit fully with the stillness and to know that within that quiet moment lies the profound possibility of restoration. She promises that broken strings can be restrung, cracked instruments can be meticulously mended, and a song that was cut tragically short can one day be played again— though perhaps in a new, transformed key.

- **Melancholy:** The weight of sorrow, grief, or artistic loss.
- **Silence:** A forced or chosen pause, the stilling of one's voice or craft.
- **Restoration:** Healing, rebuilding, and eventually returning to wholeness.

SHADOW SIDE

Lingering too long in grief, romanticising despair, or refusing to take the first step toward healing. A refusal to play again, even when the violin has been mended.

PROMPT

What silence in your life is asking to be heard? Where do you need to allow sorrow to soften into healing rather than calcify into permanent silence?



THE ROGUE'S GAMBIT

STRATEGY * AUDACITY * MANOEUVRE



The Rogue doesn't play fair—she plays to win. Cloaked in shadow, her face gives nothing away, every move rehearsed three steps ahead. Neon burns behind her, casino lights flashing chance and chaos, but she knows the gamble is never luck—it's audacity sharpened into precision. Every manoeuvre lands unseen until it's already done, leaving the world to catch up.

DIVINATORY MEANING

The Rogue's Gambit signals a time to embrace cunning, calculated risk, and decisive action. It appears when manoeuvre and foresight are essential, and when audacity must be tempered by strategy. This card reminds you that success often arises from knowing not only the next move, but also the implications of each choice in a complex, shifting landscape.

It invites you to consider where risk and opportunity intersect in your life. Boldness alone is not enough—timing, awareness, and adaptability are crucial. The Rogue's Gambit asks you to anticipate challenges, assess probabilities, and act with both courage and precision. Your insight, patience, and ability to manoeuvre in a complex environment will determine the outcomes of this moment.

- **Strategy:** Planning and anticipating moves, thinking several steps ahead.
- **Audacity:** Courage to take calculated risks and stand out in high-stakes situations.
- **Manoeuvre:** Flexibility and skill in navigating complex or competitive environments.

SHADOW SIDE

Over-cunning, manipulation, or acting without integrity. Excessive risk-taking without foresight or allowing fear of exposure to prevent action.

PROMPT

Where in your life is strategy needed? What calculated risks might bring the rewards you seek, and how can audacity and foresight work together to guide your next move?



THE GIRL AND HER GOLEM

MANIFESTATION * INTENTION * EMBODIMENT



She stands beside a colossal Golem of purple-grey stone, a public spectacle of her own making. Her gaze lifts toward it, quiet awe in her eyes—the only proof needed: she didn't find it, she summoned it. The Golem holds a fragile bouquet, massive yet precise, a perfect embodiment of her deepest desires. The Girl is a creator, and even the quietest intention has the power to move mountains and make the impossible endure.

DIVINATORY MEANING

The Girl and Her Golem appears when the forces of intention and manifestation are at work in your life. The card celebrates the partnership between your vision—the “girl”—and the power you wield—the “Golem”—reminding you that creation requires both inspiration and the capacity to shape the world. It signals that ideas, when paired with grounded action, can take physical form and enduring presence.

This card encourages you to examine where you are aligning your intentions with tangible action. Your ability to embody your vision, to invest strength, patience, and focus, will determine whether your dreams remain ethereal or become a living reality. The Golem’s presence reassures you that even immense tasks are achievable with steady resolve, while the flowers and lush setting remind you to honour beauty, sensitivity, and inspiration in the process.

- **Manifestation:** Bringing ideas, dreams, or intentions into tangible reality.
- **Intention:** Conscious focus, clarity of purpose, and deliberate action.
- **Embodiment:** Integrating power, skill, and presence to support creation.

SHADOW SIDE

Disconnection between vision and action, over-reliance on raw force without care or sensitivity, or fear that your power may be too great to wield responsibly.

PROMPT

Where in your life are you ready to align intention with action? How can you harness both strength and sensitivity to manifest your vision fully?



THE GIN SOAKED DIVA

ESCAPISM * CHARISMA * NUMBNESS



She doesn't drink a cocktail—she is the cocktail, poured and perfected. Seated inside a giant glass, umbrella in hand like a sceptre, she moves through her world on her own terms. Her smile dazzles, arms crossed to keep the world at bay, brilliance protected by practiced numbness. True charisma, The Gin-Soaked Diva shows, is artful—and sometimes requires floating above reality entirely.

DIVINATORY MEANING

The Gin-Soaked Diva surfaces when the pull of escapism is strong, when levity, indulgence, or even distraction is tempting in order to avoid the weight of life's demands. She embodies both the allure and the danger of surrendering fully to pleasure: the thrill of unrestrained fun, the liberation of laughter, the magnetism of charisma. But there is also the risk of numbing, of losing touch with yourself in the process.

The card invites you to reflect on the ways you seek release. Are you deliberately allowing space for joy, play, and creativity, or are you avoiding uncomfortable truths and responsibilities? Indulgence itself is not inherently negative; it becomes problematic only when it obscures clarity, hinders growth, disconnects you from your true desires or subtly unhinges you from reality.

This is also a card of awareness of energy and influence. The Diva draws attention naturally; her presence captivates and enchants. She encourages you to examine how you wield charm and allure, how you navigate social or professional spheres, and how your magnetic energy can be used intentionally rather than reactively.

- **Escapism:** Seeking temporary reprieve from stress or constraint, creatively or indulgently.
- **Charisma:** Using charm, personality, and presence to inspire, entertain, or influence.
- **Numbness:** Avoidance, overindulgence, or disconnect from difficult emotions.

SHADOW SIDE

Excessive avoidance, dependency on distraction, or masking vulnerability with superficial charm. Neglecting responsibilities or true emotional needs.

PROMPT

Where in your life are you seeking refuge from reality? How can you allow joy and levity without losing touch with your power, awareness, or responsibility?



THE PRIMA ABSOLUTA

EXCELLENCE * PERFECTION * DEDICATION



She sits at the centre of the stage, a secret the world was never meant to forget. Every breath, every pause, commands reverence; the air itself seems to wait for her permission to move. Rose petals drift around her in slow tides, a quiet tribute to mastery incarnate. She is the Prima Absoluta—excellence made flesh, perfection lived, dedication felt in every heartbeat.

DIVINATORY MEANING

The Prima Absoluta represents the pursuit of mastery — the relentless, graceful dedication required to elevate craft, purpose, or self into something transcendent. She stands as the embodiment of refinement through discipline, the quiet strength behind apparent ease, and the poise that comes only from countless unseen rehearsals.

When this card appears, it speaks of devotion to excellence — not in a shallow, performative sense, but as a sacred act of alignment with your highest potential. It may signal a time when precision, preparation, or commitment are required to achieve something remarkable. There is beauty in your diligence, and power in your focus. The Prima Absoluta reminds you that mastery is not about being flawless but about showing up with unwavering integrity, no matter how repetitive, difficult, or thankless the process may seem.

Yet she also cautions against the shadow of perfectionism — the impulse to perform, please, or polish yourself into invisibility. True excellence requires humanity, imperfection, and vulnerability; these are what make mastery alive rather than mechanical.

This card can also arise when your efforts are about to be recognised, or when you are being called to hold yourself to a higher standard.

- **Excellence:** Achieving mastery through consistency, focus, and authentic expression.
- **Perfection:** Striving for high standards while allowing room for imperfection and growth.
- **Dedication:** A reminder that discipline, not talent alone, leads to brilliance.

SHADOW SIDE

Rigidity, self-criticism, obsession with approval, or fear of imperfection that stifles creativity or joy.

PROMPT

What does true mastery look like for you — not through the eyes of others, but as an expression of your soul's devotion?



THE GIGGLESMITH

MIRTH * LIGHTNESS * SPONTANEITY



She barrels onto the bumper car rink, turning the world into a spinning, joyous blur. Her laughter is a physical force, dragging everything into her orbit. Arms thrown wide, head thrown back, she defies gravity and decorum alike. Joy is not given—it is seized, and The Gigglesmith commands it effortlessly.

DIVINATORY MEANING

The Gigglesmith signals a time to reclaim your joy, to let your charisma and playful energy take centre stage. She reminds you that delight, laughter, and spontaneous indulgence are not luxuries — they are vital acts of self-expression and rebellion against rigidity. Life may be unpredictable, chaotic, or even absurd at times, but this card urges you to lean in with a theatrical flourish, finding exhilaration in the very unpredictability that might otherwise unsettle you.

This card encourages you to release perfectionism, let go of control, and allow yourself to become fully immersed in experience. It's a call to remember that mirth and lightness are not signs of weakness but instead are expressions of confidence, creativity, and vitality. By embracing your inner Gigglesmith diva, you transform ordinary moments into memorable spectacle and invite others to do the same.

- **Mirth:** Cultivating exuberant joy, laughter, and irrepressible energy.
- **Lightness:** Releasing heaviness, rigidity, or self-consciousness to move freely.
- **Spontaneity:** Seizing unexpected opportunities, delighting in unpredictability, and letting your personality shine.

SHADOW SIDE

Avoiding responsibility through endless play, leaning too heavily on charm or spectacle, or using laughter and lightness to mask unresolved feelings.

PROMPT

How can you command your own stage of life with flair and joy? Where could a little chaos, humour, or spontaneous delight shift your perspective or empower your presence?



THE KEEPER OF THE CURTAINS

THRESHOLD * SECRETS * ANTICIPATION



At the edge of everything stands the Keeper of the Curtains, velvet drapes her last disguise and final defence. Costume shed, only truth remains—raw, luminous, trembling with intent. One hand clings to the familiar, the other reaches toward the glittering unknown, where secrets buzz and new worlds wait. Here, at the sacred threshold, courage meets revelation, and every breath shivers with possibility.

DIVINATORY MEANING

The Keeper of the Curtains appears when you are standing at a threshold — between what has been and what could be. She embodies the exquisite tension of the in-between: the breath before revelation, the stillness before movement, the choice before transformation. This card invites you to honour that liminal space rather than rushing through it. There is wisdom in waiting, in watching, in listening for what wishes to emerge from the dark.

It is a reminder that secrets, both inner and outer, serve a purpose. What is veiled now will be revealed in its time. You may feel the pull of the unknown, a magnetic curiosity toward what lies beyond the familiar stage of your life. Trust your intuition as you approach this crossing — it will tell you whether to step forward, linger, or retreat.

On a practical level, this card can signify confidential matters, behind-the-scenes dealings, or private insights that have not yet come to light. Emotionally, it speaks to the thrill and vulnerability of exposure — of being seen, or of daring to see.

- **Threshold:** Standing on the edge of change, transformation, or revelation.
- **Secrets:** Guarded knowledge, discretion, or the quiet power of what is unspoken.
- **Anticipation:** A gathering of energy before action; a readiness for something momentous.

SHADOW SIDE

Withholding truth for too long, fearing change, or clinging to the safety of performance instead of embracing authenticity.

PROMPT

What truth is waiting behind your curtain? What part of you is ready to step from concealment into revelation?



THE PHANTOM PERFORMER

LINGERING * HAUNTING * UNSEEN



She drifts from the stage like a rumour refusing to die—the Phantom Performer, wrapped in memory and the ghost of her applause. Not flesh, but pure theatre, hovering between illusion and aftermath. Silks cling as she glides through fog, clutching one last relic of glory. Behind her, the stage-city pulses with echoes of her reign. The show may be over, but she is not done. She never is.

DIVINATORY MEANING

The Phantom Performer lingers to remind you that what has been expressed — whether love, grief, ambition, or regret — never entirely disappears. The roles you've played, the emotions you've buried, and the echoes of your former selves still move through your present life like spectral understudies. This card asks you to acknowledge those unseen presences rather than trying to banish them. Healing begins when you turn to face what still haunts you.

This is the energy of the unspoken, the unresolved, the beautiful ghost that cannot rest until it is witnessed. It may point to an influence from the past — a relationship, project, or identity — that continues to shape your current stage even though the curtain has long since fallen. There is unfinished business here — a story that still wants its final line.

When The Phantom Performer appears, pay attention to what stirs at the edges of consciousness: recurring dreams, unexpected nostalgia, emotional déjà vu. These are messages from the unseen world, inviting you to recognise how your past performances — the person you once were, or the part you played — continue to direct the present scene.

- **Lingering:** What refuses to fade may still have something to teach you.
- **Haunting:** A reminder that echoes are only frightening when unheard.
- **Unseen:** The invisible influence shaping your life from the shadows.

SHADOW SIDE

Be wary of clinging to the ghost of former glories or allowing old pain to become your only story. When the past monopolises your spotlight, the present cannot fully take the stage.

PROMPT

What ghost still walks your stage — and what might happen if you bowed, at last, and let it go?



THE FORGOTTEN HEADLINER

OBSCURITY * REDISCOVERY * POTENTIAL



She stands in the afterglow of her own myth surrounded by yellowed headlines that once sang her name. The lilac gown still shimmers, red flowers still burn at her throat, but the applause has softened into memory. Gloved hands unfold a relic from her reign, words that refuse to be banished. Forgotten by the world, but not by herself. And that, the Forgotten Headliner knows, is where power begins again: in the rediscovery of one's own name, waiting patiently beneath the dust.

DIVINATORY MEANING

The Forgotten Headliner appears when something within you longs to be remembered — a forgotten talent, a lost voice, or a version of yourself you left behind in pursuit of approval, survival, or change. It speaks to the quiet ache of potential waiting to be rediscovered. You may feel that your moment has passed, that the applause has faded — but this card reminds you that brilliance is not bound to audience or era.

This is a time to reclaim what was sidelined: the art, the dream, or the truth you tucked away when the world moved on. Dig into your own archives. There's something in your history — a passion, a purpose — that is ready to be revived, reimagined, or reintroduced to the present.

The card also warns against confusing visibility with value. The greatest performances often take place in private, witnessed only by the soul. Rediscovery isn't only about recreating old glory, but also about recognising that the light you once radiated is still yours to command — even if the stage has changed.

- **Obscurity:** The necessary quiet where reflection takes root.
- **Rediscovery:** The return of something precious, long overlooked.
- **Potential:** A creative or spiritual reawakening waiting for your permission.

SHADOW SIDE

Clinging to what was can blind you to what might be. Do not chase the echo of old applause; instead, let it remind you that you *once dared to be seen* — and can again.

PROMPT

What treasure of your own making have you buried beneath yesterday's headlines?



THE PIANO WOMAN'S LOVER

PASSION * OBSESSION * DISSONANCE



She lounges against the piano like a sin she refuses to repent for—the Piano Woman's Lover, gown shifting between moonlight and midnight. The air is thick with something too dangerous to name. Every breath is a chord strung between pleasure and regret. Her eyes dare you to mistake hunger for love. Passion built this room; obsession locked the door. She doesn't ask for your devotion; she dares you to survive it.

DIVINATORY MEANING

The Piano Woman's Lover plays to the dangerous tempo of *too much*. This card stirs the raw edges of passion — the kind that consumes reason, blurs boundaries, and leaves behind a symphony of both beauty and ruin. It speaks to the intoxicating pull of connection, creativity, or compulsion that demands your full attention.

You may be entangled in a situation — or a person — that stirs the heart while unbalancing the soul. What began as inspiration may now border on obsession; what once harmonised may now clash in dissonant chords. The question this card asks is whether you are leading the dance or being led by it.

This card can also represent creative or emotional fixation — an idea, project, or desire that has taken on a life of its own. Passion is sacred fire, but when it burns without rhythm or restraint, it becomes destructive rather than divine. Still, dissonance is not failure — it's the tension that precedes transformation.

Allow yourself to feel deeply but play with awareness. Recalibrate the score. Not every intensity must be surrendered to; not every song must end in tragedy.

- **Passion:** The pulse that makes art and love worth the risk.
- **Obsession:** The moment where longing becomes possession.
- **Dissonance:** A necessary discord that demands truth and release.

SHADOW SIDE

Beware the allure of drama disguised as depth. The soul can mistake chaos for chemistry when it craves to be seen.

PROMPT

What are you still playing long after the song has ended — and why can't you let it rest?



THE TROUPE MOTHER

PROTECTION * LOYALTY * DEVOTION



She is the axis around which the show spins—the Troupe Mother. Seasons survived, storms weathered, secrets kept; her authority is absolute, earned in sweat and quiet sacrifice. The troupe leans on her for sanctuary and the quiet promise of being seen once the lights fade. Canvas billows, bulbs halo her, rough earth beneath sacred. She stands at the heart of it all, and they owe their devotion to her.

DIVINATORY MEANING

The Troupe Mother arrives when it's time to embody the balance between strength and tenderness. She is the heart that keeps the troupe together — the unspoken force of protection, devotion, and quiet endurance that ensures the show goes on. Her presence in a reading reminds you of your own power to nurture without losing yourself, to protect without smothering, and to lead with both authority and grace.

This card speaks of sacred duty — the roles we accept not for glory, but for love. Whether you are the one offering shelter or the one receiving it, *The Troupe Mother* asks: where does your loyalty truly lie, and what does devotion look like when it is not returned in kind?

She also warns against overextension. The caretaker can become so consumed by tending others that she forgets her own needs. Love and loyalty are powerful forces, but they must be mutual to remain holy. This card urges you to draw boundaries rooted in wisdom, not exhaustion.

- **Protection:** Creating safe spaces — emotional, physical, or spiritual — for yourself and others.
- **Loyalty:** Standing firm for those who have earned your trust.
- **Devotion:** Serving something greater than ego — love, art, community, or spirit.

SHADOW SIDE

When care becomes control, devotion turns to martyrdom. The desire to protect can sometimes conceal a fear of letting go.

PROMPT

Who or what do you hold together — and what might fall apart if you stopped trying?



THE PROMPTER OF FORGOTTEN LINES

RECALL * SUPPORT * GUIDANCE



The Prompter of Forgotten Lines waits in the wings of your mind, steady and patient, crumpled note in hand. She offers no command, only calm, unwavering presence and support. With quiet authority, she reminds you that memory can be reclaimed, and the lines that matter most are always within reach when you need them.

DIVINATORY MEANING

The Prompter of Forgotten Lines invites you to pause and reflect on what has been left unsaid, ignored, or overlooked. Her first gift is *recall* — the return of memories, insights, or truths that may hold the answers you seek now. Her second gift is *support* — a reminder that you are not alone, and that unseen hands and quiet allies are guiding you. Her third gift is *guidance* — encouragement to act on what resurfaces, to speak what has been withheld, and to revisit old situations with the wisdom you've gathered since.

This card suggests your inner and outer resources are aligning to help you untangle what lingers in shadow. Clarity often hides in small details and subtle cues — a word, a message, a fleeting feeling. Pay attention to these whispers; they are the threads that lead you back to understanding.

In relationships, projects, or personal decisions, The Prompter urges you to honour what has been forgotten as much as what stands in plain sight. She may also appear as a mentor, friend, or inner voice offering gentle reminders and quiet encouragement — nudging you to see opportunities, correct oversights, or reclaim your part in a story left unfinished.

The answers you seek are already within reach — you only need to pause, listen, and remember. Sometimes, the forgotten word is the one that restores connection and brings everything back into focus.

- **Recall:** Bring attention to the memories, ideas, or insights that have slipped from conscious thought.
- **Support:** Accept the quiet help that surrounds you — from mentors, friends, or your own inner wisdom.
- **Guidance:** Trust the nudges and whispers that steer you toward clarity and resolution.

SHADOW SIDE

Neglecting this card may manifest as repeated mistakes, missed opportunities, or a sense of disconnection. The guidance is available, but it requires conscious attention.

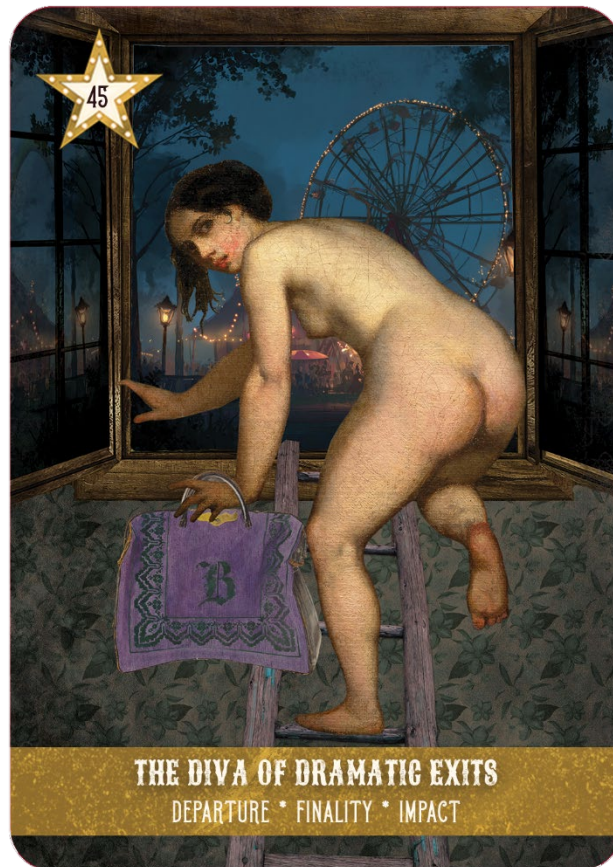
PROMPT

What have you forgotten to say — to others, or even to yourself — that deserves to be voiced now?



THE DIVA OF DRAMATIC EXITS

DEPARTURE * FINALITY * IMPACT



The Diva of Dramatic Exits doesn't wait for a curtain call—she takes the stage of her own departure. Naked and unguarded, carpet bag in hand, she steps onto a ladder bridging past and reckless, beautiful future. The carnival spins below, but her absence already steals the air. She doesn't merely leave; she ensures absolute finality, turning her last step into a story you will never forget.

DIVINATORY MEANING

The Diva of Dramatic Exits heralds a moment of departure that cannot be postponed. She calls for courage in letting go, embracing closure, and making a decisive exit. This may be a physical leaving, a shift in a relationship, a career change, or the ending of a habitual cycle. Her nudity reflects the raw honesty required to step away: stripping down to essentials, leaving only what matters, and claiming your agency.

Departure is both literal and symbolic; she reminds you that leaving is an act of empowerment, not evasion. Finality signals that there is no turning back from certain decisions, and the energy invested must now be released. Impact underscores the ripples your choice will make—not only for yourself but for those you leave behind. Her presence encourages mindful action: exit with dignity, authenticity, and awareness of the influence you carry.

This card can also indicate a need for a dramatic, visible shift in circumstances—a gesture that marks the end of one chapter and the bold beginning of another. It may call attention to moments when subtle exits are insufficient, and a statement must be made.

- **Departure:** The courage to walk away from what no longer serves, even when the audience begs for an encore.
- **Finality:** Acceptance that a cycle has completed; resisting the temptation to re-enter the scene once the spotlight fades.
- **Impact:** Recognising that every ending leaves an echo—how you exit shapes how the story is remembered.

SHADOW SIDE

Avoiding the exit, delaying closure, or remaining attached to the past can prolong discomfort or stagnation. Hesitation may reduce the impact or dilute the authenticity of your departure.

PROMPT

Where in your life are you resisting the necessity of departure? What can you release today to step forward with authenticity and impact?



THE CARNIVAL BARKER

PERSUASION * TEMPTATION * ANNOUNCEMENT



You hear her before you see her—honeyed voice cutting through the night, smooth and dangerous. The Carnival Barker steps into the light, crimson silhouette against striped tents, megaphone in hand, smile promising sin and salvation. Every word drips with persuasion, every glance an invitation you can't refuse. You shouldn't follow, but you already are—because when she calls, it isn't just a show. It's a spell.

DIVINATORY MEANING

The Carnival Barker arrives when words and presentation become your instruments of power. She symbolises the moment you must *speak up*, promote your vision, or make a bold entrance that others cannot ignore. Her energy is magnetic and performative—she draws crowds, sells dreams, and ignites curiosity. Under her influence, persuasion becomes an art form.

This card calls you to embrace visibility. Whether you are launching something new, making a declaration, or reclaiming your voice, it's time to step into the light and let yourself be seen. Your confidence and authenticity are your greatest tools of influence. Use them with intention—because what you say now will echo far beyond the tent's edge.

Temptation is also part of her domain. The Carnival Barker knows how to dazzle and seduce, but she reminds you that charisma without integrity can become manipulation. Ensure that your motives align with your message. Influence, when guided by authenticity, becomes leadership; when driven by ego, it descends into illusion.

Her appearance can also signify an incoming message or announcement that captures your attention—a new opportunity, revelation, or call to action that demands a response.

- **Persuasion:** The art of expression—how your words, tone, and energy shape outcomes and open doors.
- **Temptation:** The seductive pull of attention and approval; a reminder to discern between genuine inspiration and empty showmanship.
- **Announcement:** The need to declare something clearly and confidently—your truth, your vision, your next step.

SHADOW SIDE

Beware of over-promising, exaggeration, or seeking validation through attention. The spectacle can easily become a mask, concealing insecurity or control.

PROMPT

What truth in your life needs to be announced—clearly, proudly, and without apology? How might you use your voice not just to attract, but to inspire?



THE ELEPHANT KEEPER

GENTLENESS * STRENGTH * RESPONSIBILITY



Beneath the moonlit canopy, the Elephant Keeper sits—composed, unhurried, utterly at peace. An elephant lowers its great head, trunk curling protectively over her shoulder. The garden stirs with quiet magic, dark foliage and distant aviary glimmering. Two souls bound by trust, showing that true power lies in gentle stewardship.

DIVINATORY MEANING

The Elephant Keeper speaks of the grace that comes from balanced strength. She reminds you that power is not only the ability to move mountains, but the wisdom to know when not to. This card invites you to embody calm authority—to lead with patience, compassion, and a sense of responsibility for what you hold in your care.

When she appears, she calls attention to the bonds that shape your world: the people, projects, or energies you are entrusted with. They require your steady presence and your nurturing spirit. Gentleness, here, is not weakness—it is conscious control, the soft hand that guides the mighty.

There may also be a reminder to tend to your own inner “elephant”—your vast emotional or creative strength. Are you honouring it with respect, or suppressing it out of fear? The Elephant Keeper teaches that true mastery comes through connection, not command.

- **Gentleness:** The ability to influence without force, to calm rather than command, and to move through life with grace.
- **Strength:** The quiet resilience that sustains and protects, anchored in self-trust and integrity.
- **Responsibility:** A sacred duty to care for what has been entrusted to you—lead with wisdom, and act with compassion.

SHADOW SIDE

Neglecting your responsibilities or misusing influence may lead to imbalance. Strength without empathy becomes tyranny; gentleness without boundaries becomes martyrdom.

PROMPT

How might you express strength through care rather than control? What or whom are you being called to protect with both firmness and grace?



THE PUPPET MISTRESS

ILLUSION * MANIPULATION * INFLUENCE



Beneath the stage lights, the Puppet Mistress stands confidently, smiling, utterly in command. Tiny male figures dance from her fingertips, moving to a rhythm only she conducts. The audience adores her, unaware they are caught in her spell. Influence is her art, manipulation her music, control her standing ovation. She is the mistress of illusion—graceful, ruthless, and fully aware the strings only sing when she pulls them.

DIVINATORY MEANING

The Puppet Mistress emerges when the threads of Illusion, manipulation, and influence are at play in your life. She embodies the seductive power of shaping perception — the ability to orchestrate outcomes through charm, strategy, or subtle persuasion — while warning of the cost if authenticity is compromised. Her presence reminds you that not all that glitters is real, and mastery over appearances is only meaningful when guided by awareness and integrity.

This card asks you to consider who truly holds the strings, and whether control is serving you or ensnaring you. Influence, when wielded with clarity and compassion, can inspire, transform, and create opportunity. Misused, it can trap both you and others in cycles of dependence or illusion. The Puppet Mistress invites you to step beyond performance and projection, to recognise the power inherent in conscious choice, and to use your presence to shape outcomes with both skill and ethical intention.

- **Illusion:** Recognise where appearances may deceive and discern the truth behind the performance.
- **Manipulation:** Examine where control or persuasion is at play, in yourself or others, and choose influence over domination.
- **Influence:** Use your personal power thoughtfully; when applied with integrity, it can create transformation and inspire those around you.

SHADOW SIDE

Beware of emotional games, hidden agendas, or over-curating your image to gain approval. The need to appear in control can become a trap that leaves you bound by your own performance.

PROMPT

Where are you performing control instead of embodying truth — and what happens if you let the strings go slack?



THE MERCHANTESS OF LOST HOURS

EPHEMERA * SAVOUR * EXCHANGE



Time bends around her stall, spilling like golden sand through tilted hourglasses. The Merchantess of Lost Hours moves with quiet authority, an oversized alarm clock cradled in her hands, offering the essence of time itself for appraisal. Her gaze weighs not wealth, but choices—the currency of moments spent or squandered. She

reminds you to savour every fragment of experience, for ephemera is precious, and she will return to collect what you cannot afford to waste.

DIVINATORY MEANING

The Merchantess of Lost Hours appears when the passage of time, the fleeting nature of experience, and the conscious management of your energy are central themes in your life. She draws attention to the ephemeral beauty surrounding you and reminds you that each moment is a currency to be valued. Her presence encourages reflection, intentionality, and appreciation for what might otherwise slip away unnoticed.

She also signals a moment of reckoning with priorities: are you investing in what truly matters, or exchanging your time and energy for pursuits that leave you depleted or unfulfilled? The Merchantess asks you to savour the present, to fully inhabit each experience, and to consider carefully the trade-offs in your life.

Ephemera: Cherish the fleeting moments; their impermanence gives them meaning and magic.

- **Savour:** Engage fully with your present experience, noticing the small joys that make life rich.
- **Exchange:** Consider carefully what you give your time, attention, and energy to.

SHADOW SIDE

Neglecting this card may lead to squandered time, overcommitment, or chasing distractions at the expense of meaningful experience. You may feel the weight of lost moments or regret choices made without full awareness. Reclaim your attention, slow your pace, and invest your energy with intention.

PROMPT

Which moments are slipping away unnoticed, and how can you honour, savour, or exchange your hours more consciously?



THE SPOTLIGHT STEALER

ATTENTION * AMBITION * RECOGNITION



Naked but for red heels, the Spotlight Stealer leans forward on her theatre chair, every inch of her audacious presence claiming the stage. Pink spotlights blaze across her body, but it's her defiance, her brazen refusal to hide, that commands the room. Every line of her posture radiates ambition. She demands attention, commands recognition, and reminds the world: when your moment comes, you do not wait—you seize it.

DIVINATORY MEANING

The Spotlight Stealer appears when you are being called to step forward. She reminds you that there is power in fully claiming your space, particularly when your talents, creativity, or insights demand visibility. Her presence encourages you to embrace authority and celebrate your achievements, even when this might draw scrutiny or envy.

This card also underscores intentional visibility: ambition is not about seeking approval, but about being recognised for the value and authenticity of what you contribute. The Spotlight Stealer asks you to examine where you may be holding back to avoid judgment, and to consider stepping confidently into the light, fully aware of your worth and the impact you can make.

- **Attention:** Notice where your presence, ideas, or talents are demanding acknowledgment, and allow yourself to be seen without hesitation.
- **Ambition:** Recognise your own drive and goals, and give yourself permission to pursue them boldly, even against fear or resistance.
- **Recognition:** Seek validation from authenticity and accomplishment, rather than external approval, and celebrate your successes fully.

SHADOW SIDE

Excessive desire for visibility or approval can lead to vanity, envy, or performative behaviour that disconnects you from your true purpose.

PROMPT

Where are you ready to step into the spotlight and claim your rightful place — fully, boldly, and without apology?



THE WITCHSTARTER

IGNITION * INITIATION * MOMENTUM

[The Witchstarter plays favourites and only those who backed her on Kickstarter get a visit. She may not appear in every deck.]



Every moment is opening night for the Witchstarter. Wand tipped with a blazing crystal, she pulses with the spark that sets everything in motion. Shadowed silhouettes linger behind her, coven and witnesses alike, as she calls the ritual into being and drives the momentum that follows. Fearless, electric, unstoppable—she is utterly spellbinding.

DIVINATORY MEANING

The Witchstarter appears when you are poised at the threshold of new beginnings, a moment ripe with possibility and latent energy. She signals the need to take decisive action — to ignite the spark that transforms intention into reality. This card urges you to honour the impulse to act, recognising that hesitation or overthinking can dissipate momentum before it gathers strength. Every step, no matter how small, contributes to the fire that fuels lasting change.

She reminds you that initiation is not just a solitary act: energy flows more powerfully when shared, whether through collaboration, community, or simply connecting with like-minded forces.

This card also highlights the cyclical nature of energy: ignition leads to momentum, momentum fuels further creation, and each new beginning carries lessons that prepare you for the next.

- **Ignition:** The spark of creation, inspiration, or decision that sets events into motion.
- **Initiation:** Courageous first steps into unknown territory, embracing transformation and growth.
- **Momentum:** The forward drive that compounds over time, turning initial effort into lasting outcomes.

SHADOW SIDE

Delaying action or resisting change can stall progress, leaving potential unfulfilled. Relying solely on inspiration without follow-through risks wasted energy, while moving recklessly without guidance can scatter resources and focus.

PROMPT

Where is the spark within you waiting to be kindled, and what first step will set your vision in motion? How can you harness momentum without losing focus or integrity?